

QUARTER-TURN GH=30

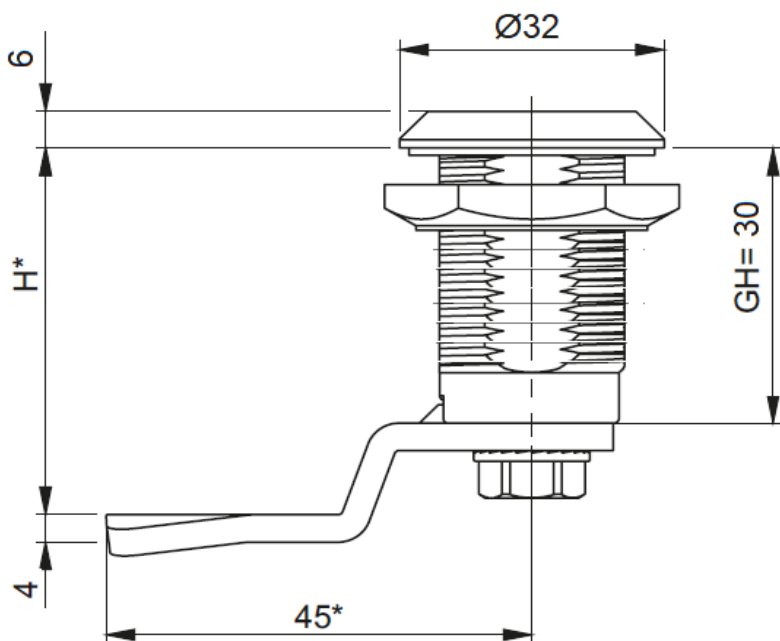
Material:

Housing: Zinc die, chrome plated, zinc die black, Polyamide or Stainless steel

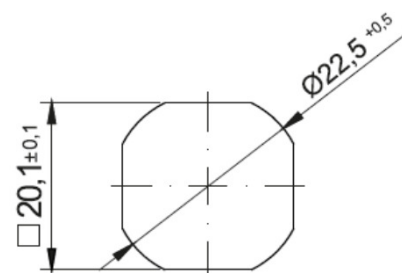
Insert: Zinc die, chrome plated, zinc die black, Polyamide or Stainless steel

Cam: Steel, zinc plated or Stainless steel.

INOX
Stainless Steel



CutOut



Overview of items

Version	Zinc die Chrome pl.	Zinc die Black	Polyamide Black	Stainless Steel
b) Hex 8mm	PA2203130-000	PA2203140-000	PA2203170-000	PA2203180-000
Hex 9mm	PA2203131-000	PA2203141-000	PA2203171-000	PA2203181-000
Double bit 3mm	PA2203132-000	PA2203142-000	PA2203172-000	PA2203182-000
Double bit 5mm	PA2203133-000	PA2203143-000	PA2203173-000	PA2203183-000
Square 7mm	PA2203135-000	PA2203145-000	PA2203175-000	PA2203185-000
Square 8mm	PA2203136-000	PA2203146-000	PA2203176-000	PA2203186-000
Square 8mm slotted	PA2203137-000	PA2203147-000	PA2203177-000	PA2203187-000
Triangular 7mm	PA2203138-000	PA2203148-000	PA2203178-000	PA2203188-000
Triangular 8mm	PA2203139-000	PA2203149-000	PA220179-000	PA2203189-000
Triangular 10mm with M5 screw hole	PA2203197-000	-	-	-
Slotted recessed coinproof	PA2203155-000	PA2203165-000	PA2203195-000	-

* Cam Steel Zinc plate ou stainless steel - see cam series 5 - page 1A-130

