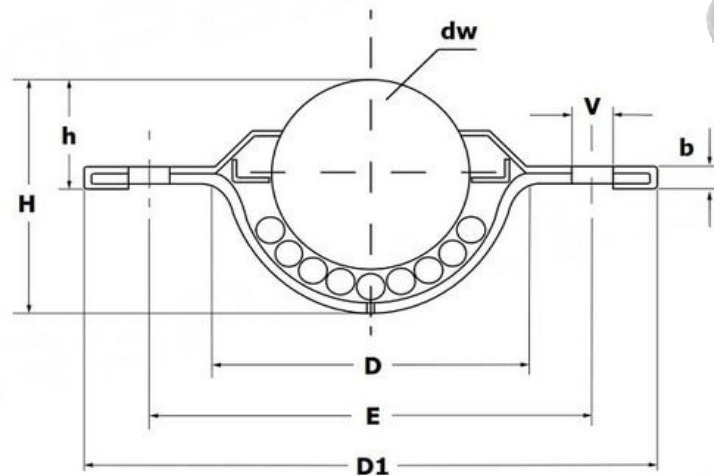


BALL TRANSFER UNITS - PRESSED METAL SHEET TYPE WITH FIXING HOLES



- Housing in hardened and zinc plated pressed metal sheet.
- Holes on the flange for fixing by means of screws or rivets
- To guarantee a better fluency, the felt sealing system is not present.
- Version with the big ball made of plastic material:
 - is particularly suitable to handle gentle surfaces as glass or crystal sheets, wood panels, painted or glazed pressed metal sheets, and so on;*
 - working temperatures 0°/60°.*

| version | DIMENSIONS | | | | | | | | | | Load (Kg) | Part N° |
|--|------------|--------|----|----------|------|-----|-----|----|----|----|----------------|---------------------|
| | dw | D | D1 | h | H | b | V | E | N° | | | |
| Body made of zinc plated steel, balls made AISI 52100 chrome steel | 15 | 24-0,2 | 41 | 10,8±0,2 | 19,3 | 3,4 | 3,5 | 30 | 2 | 15 | | PA80025-D.15-B-000 |
| Body made of zinc plated steel, balls made AISI 420C Stainless steel | 15 | 24-0,2 | 41 | 10,8±0,2 | 19,3 | 3,4 | 4,5 | 30 | 2 | 15 | | PA80025-D.15-C-000 |
| Body made of zinc plated steel, big ball made of plastic*, small balls made of AISI 52100 chrome steel | 15 | 24-0,2 | 41 | 10,8±0,2 | 19,3 | 3,4 | 5,5 | 30 | 2 | 10 | | PA80025-D.15-BD-000 |
| Body made of zinc plated steel, big ball made of plastic*, small balls made of AISI 420C stainless steel | 15 | 24-0,2 | 41 | 10,8±0,2 | 19,3 | 3,4 | 6,5 | 30 | 2 | 10 | | PA80025-D.15-CD-000 |
| Body made of zinc plated steel, balls made AISI 52100 chrome steel | 25 | 38-0,2 | 56 | 14,6±0,3 | 30 | 4 | 4 | 45 | 2 | 60 | | PA80025-D.25-B-000 |
| Body made of zinc plated steel, balls made AISI 420C Stainless steel | 25 | 38-0,2 | 56 | 14,6±0,4 | 30 | 4 | 4 | 45 | 2 | 60 | | PA80025-D.25-C-000 |
| Body made of zinc plated steel, big ball made of plastic*, small balls made of AISI 52100 chrome steel | 25 | 38-0,2 | 56 | 14,6±0,5 | 30 | 4 | 4 | 45 | 2 | 20 | | PA80025-D.25-BD-000 |
| Body made of zinc plated steel, big ball made of plastic*, small balls made of AISI 420C stainless steel | 25 | 38-0,2 | 56 | 14,6±0,6 | 30 | 4 | 4 | 45 | 2 | 20 | | PA80025-D.25-CD-000 |