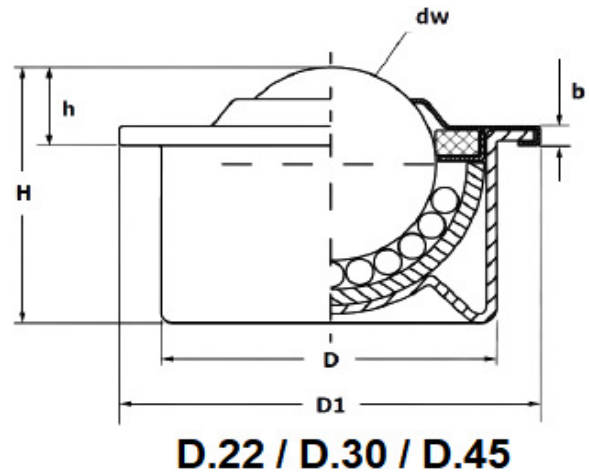
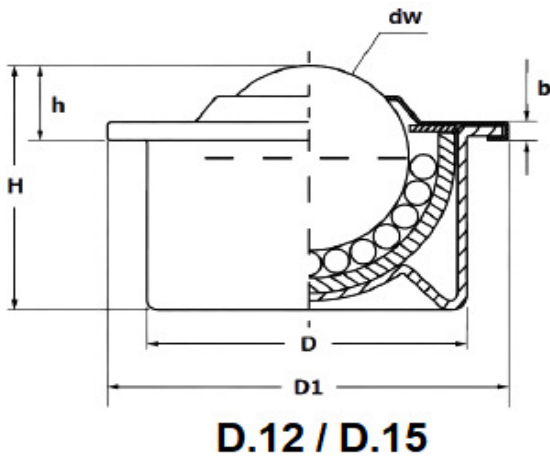




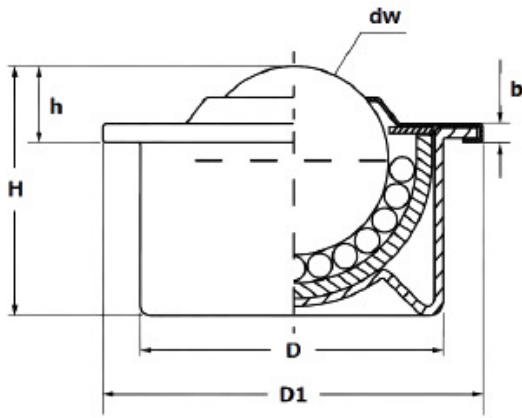
BALL TRANSFER UNITS - LIGHT DUTY TYPE



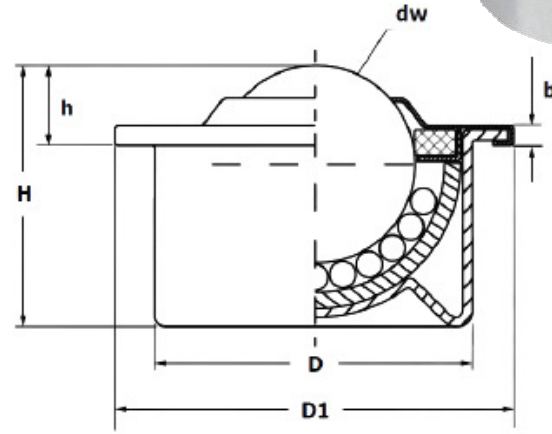
- Dimensionally interchangeable with the PA80000 version, they guarantee good smoothness and greater lightness at low costs.
- Housing and cover in pressed metal sheet.
- Inner shell in hardened pressed steel.
- Felt seal (except for D.12 and D.15)

version	DIMENSIONS						Load (Kg)		Part N°
	dw	D	D1	h	H	b			
Housing in zinc plated pressed metal sheet, inner shell in hardened steel, balls made of chrome steel	12	22±0,08	28	8±0,2	17,2	3	15	15	PA80020-D.12-B-000
	15	24±0,08	31	9,5±0,2	21	3	50	35	PA80020-D.15-B-000
	22	36±0,08	45	9,8±0,2	29,5	3,5	120	80	PA80020-D.22-B-000
	30	45±0,1	55	13,8±0,3	36,8	4	250	170	PA80020-D.30-B-000
	45	62±0,15	75	19±0,4	53,5	6	420	300	PA80020-D.45-B-000
Housing in zinc plated pressed metal sheet, inner shell in hardened steel, balls made of stainless steel AISI 420C	15	24±0,08	31	9,5±0,2	21	3	35	25	PA80020-D.15-C-000
	22	36±0,08	45	9,8±0,2	29,5	3,5	90	60	PA80020-D.22-C-000
	30	45±0,1	55	13,8±0,3	36,8	4	140	100	PA80020-D.30-C-000
Housing in stainless steel plated pressed metal sheet, inner shell in hardened stainless steel, balls made of stainless steel AISI 420C	15	24±0,08	31	9,5±0,2	21	3	35	25	PA80020-D.15-SS-000
	22	36±0,08	45	9,8±0,2	29,5	3,5	90	60	PA80020-D.22-SS-000
	30	45±0,1	55	13,8±0,3	36,8	4	140	100	PA80020-D.30-SS-000

BALL TRANSFER UNITS - LIGHT DUTY TYPE WITH MAIN PLASTIC BALL





D.12 / D.15



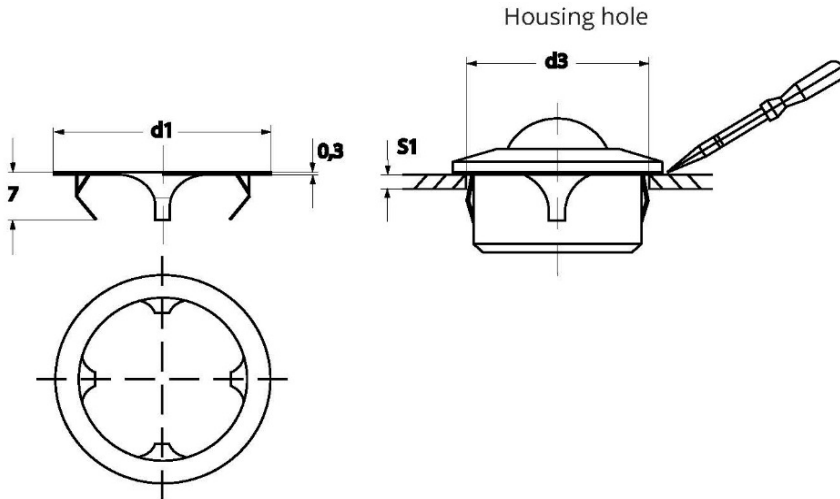
D.22 / D.30 / D.45

- Dimensionally interchangeable with the PA80000 version, they guarantee good smoothness and greater lightness at low costs.
- Housing and cover in pressed metal sheet.
- Inner shell in hardened pressed steel.
- Version with main plastic ball:
 - Best choice for handling particularly delicate surfaces such as sheets of glass or crystal, wooden panels, painted or satin sheet plates, and so on*
 - No felt seal to ensure better smoothness even with low loads*
 - Usually not to be used turned upside down*
 - Working temperature 0° / 60°*

version	DIMENSIONS						Load (Kg)		Part N°
	dw	D	D1	h	H	b			
Housing in zinc plated pressed metal sheet, inner shell in hardened steel, main plastic ball*, small balls in chrome steel	15	24±0,08	31	9,5±0,2	21	3	13	-	PA80020-D.15-BD-000
	22	36±0,08	45	9,8±0,2	29,5	3,5	20	-	PA80020-D.22-BD-000
	30	45±0,1	55	13,8±0,3	36,8	4	25	-	PA80020-D.30-BD-000
	45	62±0,15	75	19±0,4	53,5	6	25	-	PA80020-D.45-BD-000
Housing in zinc plated pressed metal sheet, inner shell in hardened steel, main plastic ball*, small balls in stainless steel AISI 420C	15	24±0,08	31	9,5±0,2	21	3	13	-	PA80020-D.15-CD-000
	22	36±0,08	45	9,8±0,2	29,5	3,5	20	-	PA80020-D.22-CD-000
	30	45±0,1	55	13,8±0,3	36,8	4	25	-	PA80020-D.30-CD-000
Housing in stainless steel pressed metal sheet, inner shell in hardened steel, main plastic ball*, small balls in stainless steel AISI 420C	15	24±0,08	31	9,5±0,2	21	3	13	-	PA80020-D.15-SSCD-000
	22	36±0,08	45	9,8±0,2	29,5	3,5	20	-	PA80020-D.22-SSCD-000
	30	45±0,1	55	13,8±0,3	36,8	4	25	-	PA80020-D.30-SSCD-000

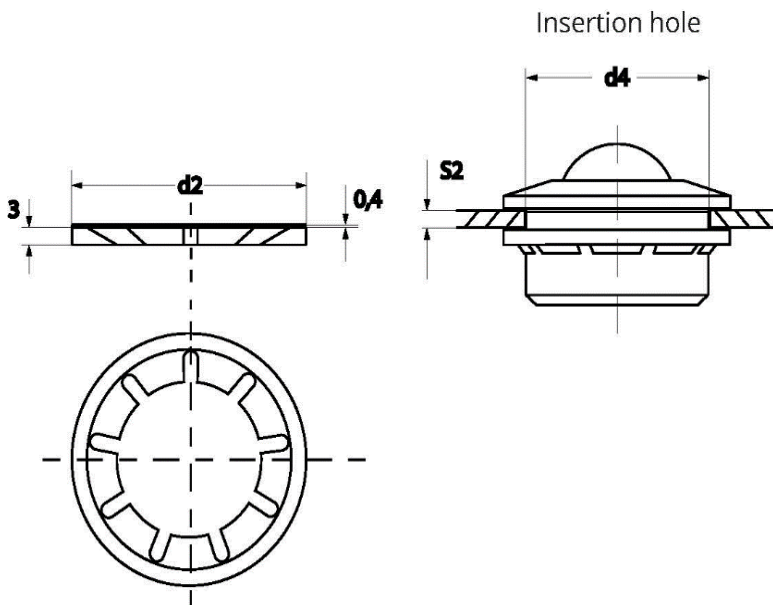
FIXING RING

Type "A" - Elastic fixing ring, removable Version



TYPE	D1	D3	S1
PA80000-D.12-Clip-A	30,5	25 -0,2	2 - 3 mm
PA80000-D.15-Clip-A	44	37,3 -0,3	2 - 4 mm
PA80000-D.30-Clip-A	54,8	46,7 -0,4	2 - 4 mm

Type "A" - Elastic fixing ring, Fixed Version



TYPE	D1	D3	S1
PA80000-D.12-Clip-B	36,5	23 -0,2	2 - 4 mm
PA80000-D.15-Clip-B	41,5	25 -0,3	2 - 6 mm
PA80000-D.30-Clip-B	60	46 -0,4	2 -15 mm

