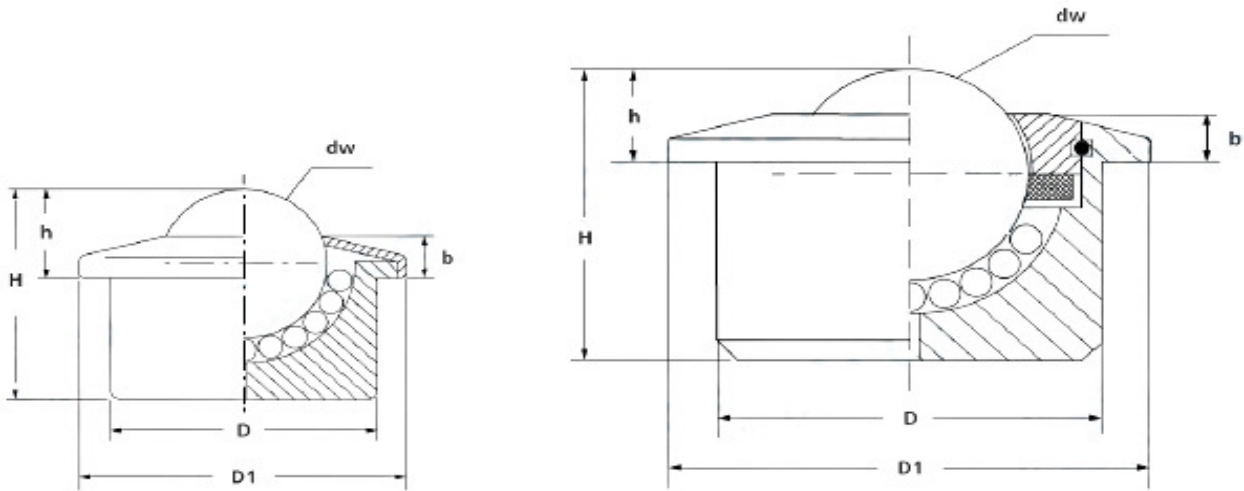




## BALL TRANSFER UNITS - HEAVY DUTY TYPE WITH FLANGE



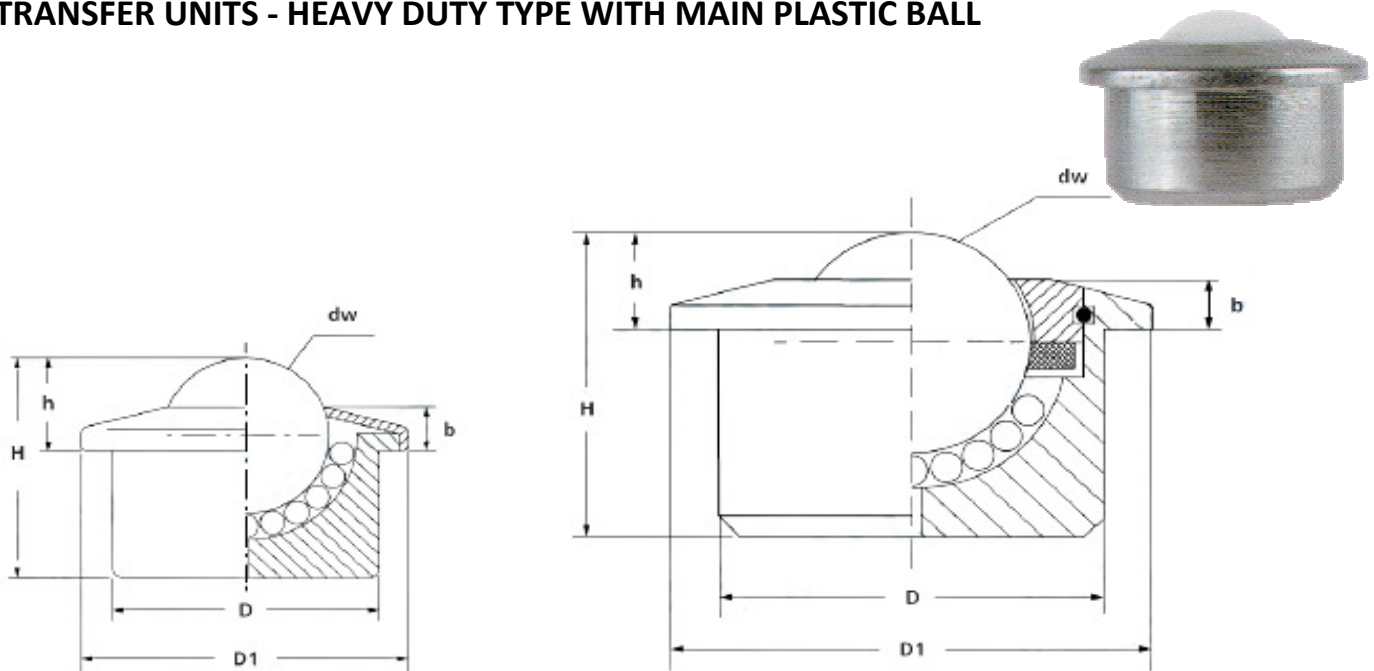
**D.12**

**D.15 / D.22 / D.30 / D.45**

- Hardened housing with flange machined from bar, in order to guarantee high flow rates and a greater resistance to stress.
- Reinforced cover in turned steel.
- Felt seal ( except for D.12 and D.15 )
- Drain hole on the bottom.

version	DIMENSIONS						Load ( Kg)		Part N°
	dw	D	D1	h	H	b			
Steel Housing, balls made chrome steel	12	22±0,08	27	8±0,2	16,75	5	20	15	PA80000-D.12-A-000
	15	24±0,08	31	9,5±0,2	21	5,5	50	35	PA80000-D.15-A-000
	22	36±0,08	45	9,8±0,2	30,5	4,5	180	125	PA80000-D.22-A-000
	30	45±0,1	55	13,8±0,3	36,8	8	350	250	PA80000-D.30-A-000
	45	62±0,15	75	19±0,4	53,5	10	600	420	PA80000-D.45-A-000
Zinc plated steel housing, balls made of chrome steel	12	22±0,08	27	8±0,2	16,75	5	20	15	PA80000-D.12-B-000
	15	24±0,08	31	9,5±0,2	21	5,5	50	35	PA80000-D.15-B-000
	22	36±0,08	45	9,8±0,2	30,5	4,5	180	125	PA80000-D.22-B-000
	30	45±0,1	55	13,8±0,3	36,8	8	350	250	PA80000-D.30-B-000
	45	62±0,15	75	19±0,4	53,5	10	600	420	PA80000-D.45-B-000
Zinc plated steel housing, balls made of stainless steel 420C	12	22±0,08	27	8±0,2	16,75	5	15	10	PA80000-D.12-C-000
	15	24±0,08	31	9,5±0,2	21	5,5	40	25	PA80000-D.15-C-000
	22	36±0,08	45	9,8±0,2	30,5	4,5	130	90	PA80000-D.22-C-000
	30	45±0,1	55	13,8±0,3	36,8	8	240	170	PA80000-D.30-C-000
	45	62±0,15	75	19±0,4	53,5	10	400	280	PA80000-D.45-C-000
Housing internal parts and balls made of stainless steel 420C	12	22±0,08	27	8±0,2	16,75	5	15	10	PA80000-D.12-SS-000
	15	24±0,08	31	9,5±0,2	21	5,5	40	25	PA80000-D.15-SS-000
	22	36±0,08	45	9,8±0,2	30,5	4,5	130	90	PA80000-D.22-SS-000
	30	45±0,1	55	13,8±0,3	36,8	8	240	170	PA80000-D.30-SS-000
	45	62±0,15	75	19±0,4	53,5	10	400	280	PA80000-D.45-SS-000



## BALL TRANSFER UNITS - HEAVY DUTY TYPE WITH MAIN PLASTIC BALL



**D.12**

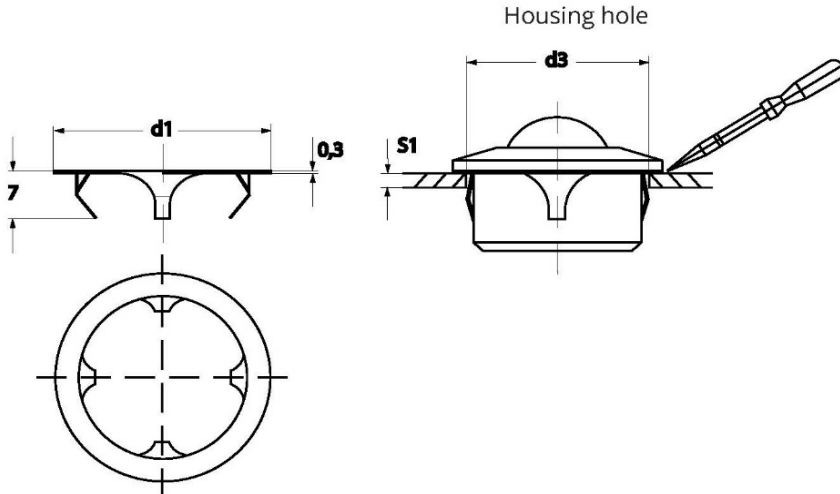
**D.15 / D.22 / D.30 / D.45**

- Hardened housing with flange machined from bar, in order to guarantee high flow rates and a greater resistance to stress
- Reinforced cover in turned steel.
- Drain hole on the bottom
- Version with main plastic ball:
  - Best choice for handling particularly delicate surfaces such as sheets of glass or crystal, wooden panels, painted or satin sheet plates, and so on\*
  - No felt seal to ensure better smoothness even with low loads\*
  - Usually not to be used turned upside down\*
  - Working temperature 0° / 60°\*

version	DIMENSIONS						Load ( Kg)		Part N°
	dw	D	D1	h	H	b			
Zinc plated steel body, small chrome steel balls, main ball made of plastic*	12	22±0,08	27	8±0,2	16,75	5	5	-	PA80000-D.12-BD-000
	15	24±0,08	31	9,5±0,2	21	5,5	13	-	PA80000-D.15-BD-000
	22	36±0,08	45	9,8±0,2	30,5	4,5	20	-	PA80000-D.22-BD-000
	30	45±0,1	55	13,8±0,3	36,8	8	25	-	PA80000-D.30-BD-000
	45	62±0,15	75	19±0,4	53,5	10	30	-	PA80000-D.45-BD-000
zinc plated steel body, small AISI 420C stainless steel ball, main ball made of plastic*	12	22±0,08	27	8±0,2	16,75	5	5	-	PA80000-D.12-CD-000
	15	24±0,08	31	9,5±0,2	21	5,5	13	-	PA80000-D.15-CD-000
	22	36±0,08	45	9,8±0,2	30,5	4,5	20	-	PA80000-D.22-CD-000
	30	45±0,1	55	13,8±0,3	36,8	8	25	-	PA80000-D.30-CD-000
	45	62±0,15	75	19±0,4	53,5	10	30	-	PA80020-D.45-CD-000
Housing internal parts and small balls made of stainless steel AISI 420C, main ball made of plastic*	12	22±0,08	27	8±0,2	16,75	5	5	-	PA80000-D.12-SSCD-000
	15	24±0,08	31	9,5±0,2	21	5,5	13	-	PA80000-D.15-SSCD-000
	22	36±0,08	45	9,8±0,2	30,5	4,5	20	-	PA80000-D.22-SSCD-000
	30	45±0,1	55	13,8±0,3	36,8	8	25	-	PA80000-D.30-SSCD-000
	45	62±0,15	75	19±0,4	53,5	10	30	-	PA80000-D.45-SSCD-000

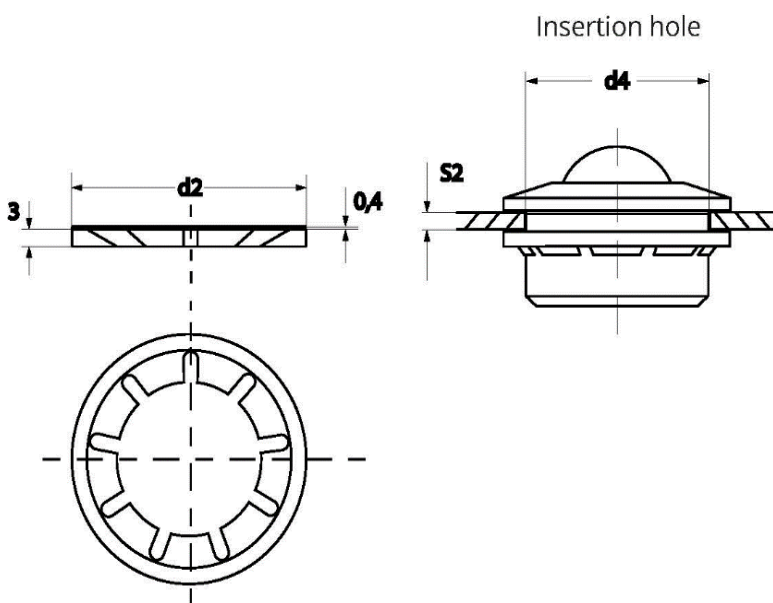
## FIXING RING

### Type "A" - Elastic fixing ring, removable Version



TYPE	D1	D3	S1
PA80000-D.12-Clip-A	30,5	25 -0,2	2 - 3 mm
PA80000-D.15-Clip-A	44	37,3 -0,3	2 - 4 mm
PA80000-D.30-Clip-A	54,8	46,7 -0,4	2 - 4 mm

### Type "A" - Elastic fixing ring, Fixed Version



TYPE	D1	D3	S1
PA80000-D.12-Clip-B	36,5	23 -0,2	2 - 4 mm
PA80000-D.15-Clip-B	41,5	25 -0,3	2 - 6 mm
PA80000-D.30-Clip-B	60	46 -0,4	2 -15 mm

