

HINGE 120°

Door bending 25mm, for surface mounted door
 120° Concealed Hinge for surface mounted doors, heavy dutt version
 RH or LH application.

Material:

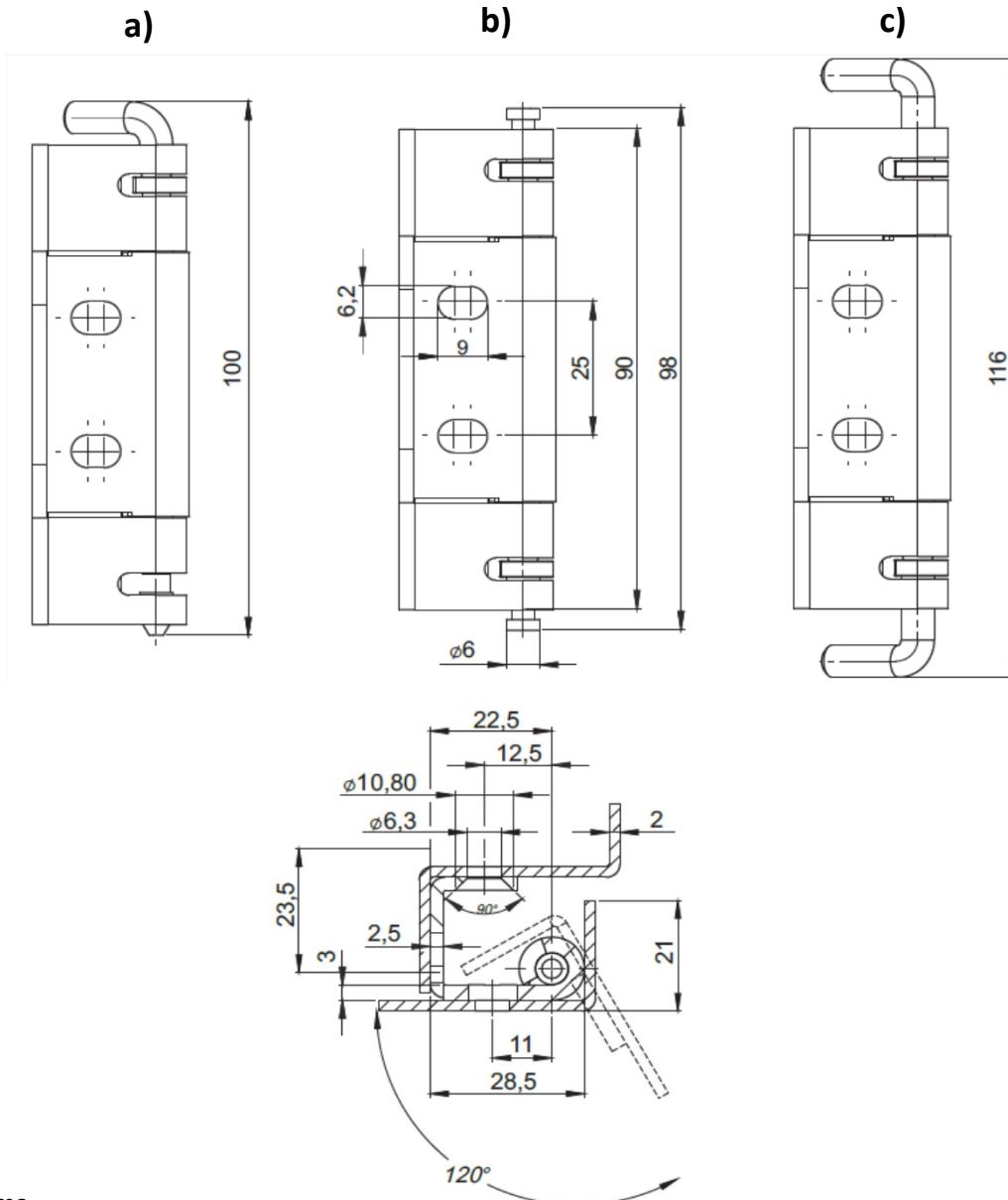
Frame Partes: Steel, zinc plated or stainless steel

Door-Part: Steel, untreated or stainless steel

Pin: Steel, zinc plated or stainless steel

Fastening washer: POM

INOX
 Stainless Steel



Overview of items

Version	Part No	Part No
Frame-Part Countersunk for M6 Screws - Frame Holes $\varnothing 6.3$	Steel, zinc plated	Stainless Steel
a) Hinge 120°	PA6411431-000	PA6411431-SST
b) Hinge 120°	PA6411432-000	PA6411432-SST
c) Hinge 120°	PA6411433-000	PA6411433-SST

