

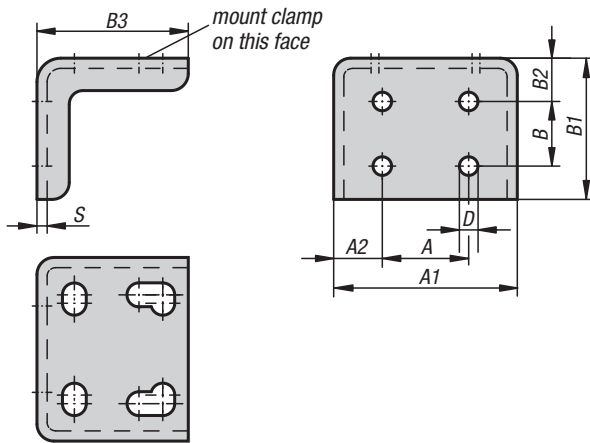
Angle brackets



Material:
Steel.

Version:
Galvanized and chromed.

Sample order:
K0098.02



KIPP Angle brackets

Order No.	A	A1	A2	B	B1	B2	B3	D	S
K0098.02	18	43	12,5	15	36,5	13,5	29,5	5	2
K0098.04	25,4	54	14,2	19	41,5	12,7	44,5	5,5	3
K0098.06	44	76	16	32	62	21	66	8,6	4

Plastic grips

round



Material:

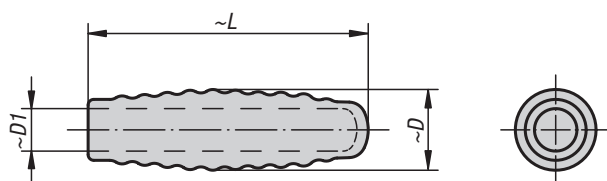
Plastic

Version:

Orange, oil-resistant

Sample order:

K0099.28



KIPP Plastic grips, round

Order No.	~D	~D1	~L
K0099.12	15	9,5	70
K0099.19	20	12,7	75
K0099.22	25	16	100
K0099.28	28	19	90
K0099.30	32	22	95
K0099.33	35	25	100

Plastic grips

**Material:**

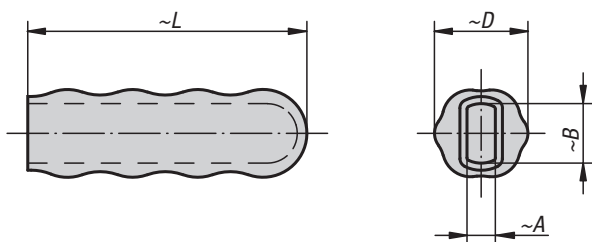
Plastic

Version:

Orange, oil-resistant

Sample order:

K0100.30



KIPP Plastic grips

Order No.	~A	~B	~D	~L
K0100.16	4	8	15	45
K0100.19	6	10	19	53
K0100.20	5	10	20	60
K0100.22	4	13	22	58
K0100.23	5	13	22	60
K0100.28	6	15	26	85
K0100.30	8	17	31	105
K0100.32	8	19	31	105
K0100.33	8	22	32	115
K0100.34	10	22	32	95
K0100.35	10	25	35	120

Thrust screws

with thrust pad



Material:

Screw and thrust pad free-cutting steel.

Version:

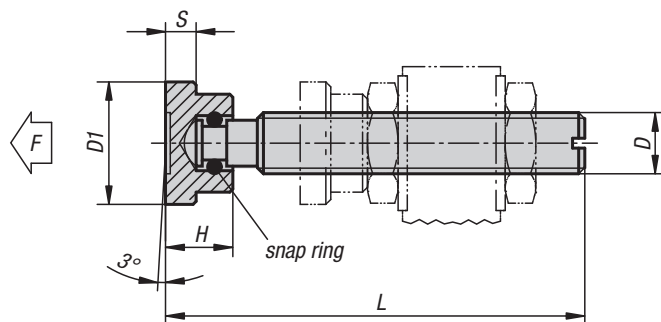
Screw black.

Thrust pad black oxidised.

Screw pin and thrust pad case-hardened.

Sample order:

K0688.10X63



KIPP Thrust screws with thrust pad

Order No.	L	H	D	D1	S	F max. kN
K0688.06X	32/37/42/52	7	M6	12	2,5	1
K0688.08X	38/43/48/53/63	9	M8	16	4	2,3
K0688.10X	53,5/58,5/63,5/68,5/83,5	11	M10	20	5	3,5
K0688.12X	64,5/69,5/74,5/84,5/104,5	13	M12	25	6	4,6
K0688.16X	70,3/75,3/85,3/105,3/130,3	15	M16	32	7	6

Thrust screws

with thrust pad



Material:

Screw and thrust pad free-cutting steel.

Version:

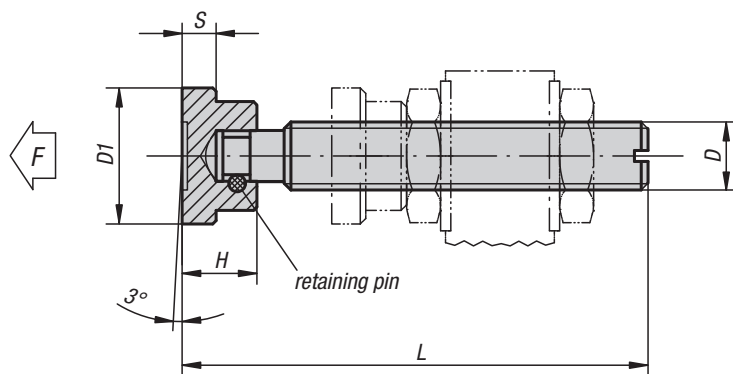
Screw black.

Thrust pad black oxidised.

Screw pin and thrust pad case-hardened.

Sample order:

K0689.10X84



KIPP Thrust screws with thrust pad

Order No.	L	H	D	D1	S	F max. kN
K0689.06X52	52	7	M6	12	2,5	1
K0689.08X63	63	9	M8	16	4	2,3
K0689.10X84	84	11	M10	20	5	3,5
K0689.12X104	104	13	M12	25	6	4,6
K0689.14X105	105	14	M14	28	6	5
K0689.16X130	130	15	M16	32	7	6

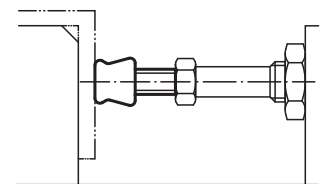
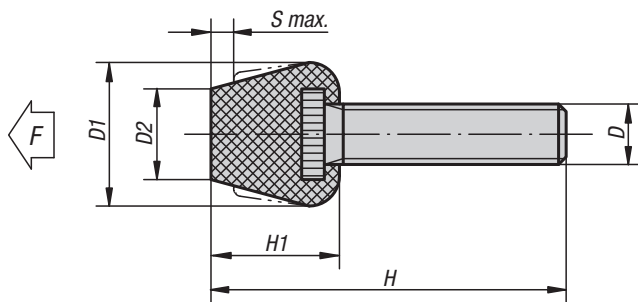
Thrust screws neoprene



Material:
Screw steel.
Thrust pad neoprene.

Version:
Neoprene pad moulded onto screw end.
Screw copper-plated.

Sample order:
K0690.08



KIPP Thrust screws neoprene

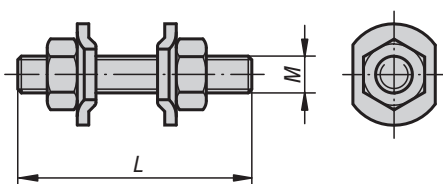
Order No.	H	H1	D	D1	D2	S max.	F max. N
K0690.08	63	17	M8x46	19	12	3	750
K0690.081	43	17	M8x26	19	12	3	750
K0690.10	80	19	M10x61	19	14	3,5	1000
K0690.101	55	19	M10x36	19	14	3,5	1000

Clamping spindles

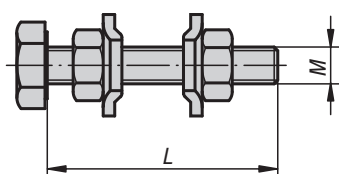
rigid



Form A



Form B



Material:

Steel. Spindle grade 5.8.

Version:

Spindle and nuts phosphated.
Flank washers galvanized and chromed.

Sample order:

K0101.06050

Note:

Version K0101.104020 without locking washer.

KIPP Clamping spindles, rigid

Order No.	Form	M	L
K0101.05025	A	M5	25
K0101.05035	A	M5	35
K0101.06050	A	M6	50
K0101.08065	A	M8	65
K0101.10085	A	M10	85
K0101.104020	B	M4	20
K0101.105020	B	M5	20
K0101.105035	B	M5	35
K0101.106025	B	M6	25
K0101.106050	B	M6	50
K0101.108040	B	M8	40
K0101.108060	B	M8	60
K0101.110050	B	M10	50
K0101.110080	B	M10	80

Clamping spindles

with swivel foot



Material:

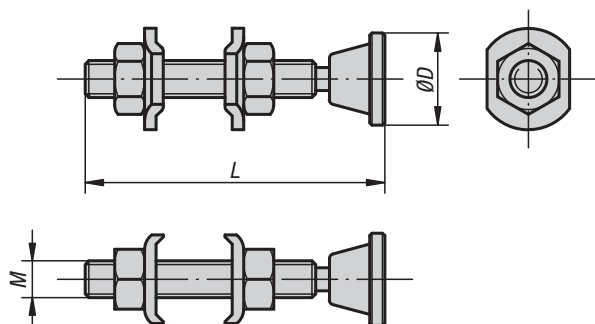
Steel. Spindle grade 5.8.

Version:

Spindle, nuts and swivel foot phosphated.
Flank washers galvanized and chromed.

Sample order:

K0102.10085

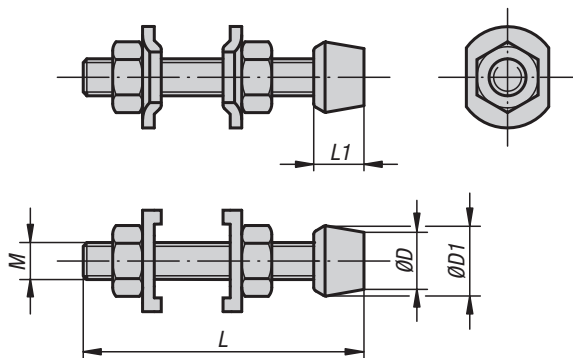


KIPP Clamping spindles with swivel foot

Order No.	M	L	D
K0102.05035	M5	35	12
K0102.06050	M6	50	12
K0102.08065	M8	65	20
K0102.10085	M10	85	20
K0102.12100	M12	100	25
K0102.16150	M16	150	45

Clamping spindles

with vulcanized neoprene thrust pad



Material:

Threaded spindle, washers and nuts steel.
Thrust pad neoprene.

Version:

Threaded spindle and washers galvanized.
Nuts black oxidised.

Sample order:

K0103.05038

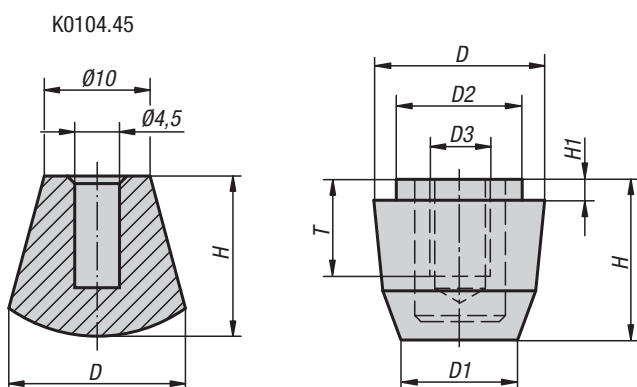
Note:

The clamping spindle K0103.04032 is supplied with one nut.

KIPP Clamping spindles with vulcanised neoprene thrust pad

Order No.	M	L	L1	D	D1
K0103.04032	M4	32	10	8	12
K0103.05038	M5	38	11	11,5	14
K0103.06045	M6	44	14	10	16
K0103.08065	M8	63	19	13	19
K0103.10085	M10	85	26	15	24
K0103.12100	M12	100	26	25	31

Thrust pads neoprene

**Material:**

Neoprene with steel insert

Version:Black, oil-resistant.
Insert galvanized and chromed.**Sample order:**

K0104.12

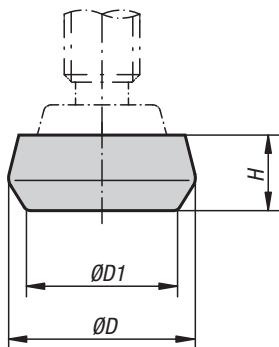
Note:

The neoprene thrust pad with order No. K0104.45 is supplied without steel insert or thread.

KIPP Thrust pads neoprene

Order No.	D	D1	D2	D3	H	H1	T	Suitable for article No.
K0104.45	12	-	-	-	10	-	-	K0101.05025 K0101.05035
K0104.06	16	10,3	10,8	M6	13,7	2	5,5	K0101.06050
K0104.08	21	13,5	15	M8	17,7	2,7	9	K0101.08065
K0104.10	23	15,4	17	M10	20,7	3	8	K0101.10085
K0104.12	29	19,5	21	M12	22,7	3	10,8	-

Plastic covers



Material:
Plastic

Version:
Black, oil-resistant

Sample order:
K0105.16

KIPP Plastic covers

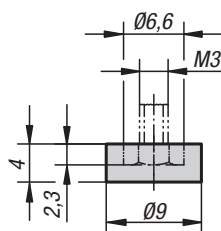
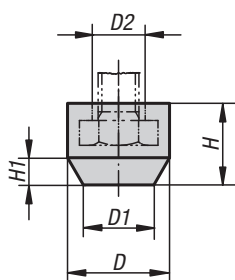
Order No.	D	D1	H	Suitable for clamping spindle with swivel foot order No.
K0105.16	16	14	8	K0102.05035 K0102.06050
K0105.25	25	21	10	K0102.10085 K0102.08065
K0105.29	29	25	11	K0102.12100

K0106

Protective caps

K0106.01 - K0106.05
K0106.07

K0106.06



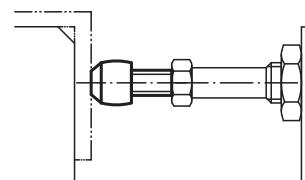
Material:
K0106.01 to K0106.05 and K0106.07: oil-resistant rubber; K0106.06: polyamide

Version:
Rubber: black; polyamide: white

Sample order:
K0106.03

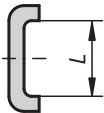
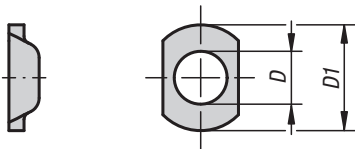
KIPP Protective caps

Order No.	D	D1	D2	H	H1	for screws
K0106.06	-	-	-	-	-	M3
K0106.01	11	7	5,5	8,5	4	M4
K0106.02	12,5	8	6,8	10	4	M5
K0106.03	15	10	8,5	12	4	M6
K0106.04	19	13	11,3	15	6	M8
K0106.07	23	15	14,5	18	7	M10
K0106.05	26	19	16,5	20	7	M12



Locking washers

for clamping spindles



Material:
Steel.

Version:
galvanized.

Sample order:
K0107.05



KIPP Locking washers for clamping spindles

Order No.	D through hole for	D1	L
K0107.05	M5	13	9
K0107.051	M5	15	10
K0107.06	M6	18	12
K0107.08	M8	22	15
K0107.10	M10	26	20
K0107.12	M12	32	23
K0107.16	M16	35	27

