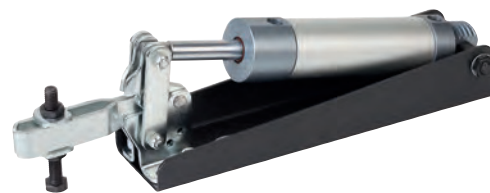


# Pneumatic clamps horizontal

Form A

**Material:**

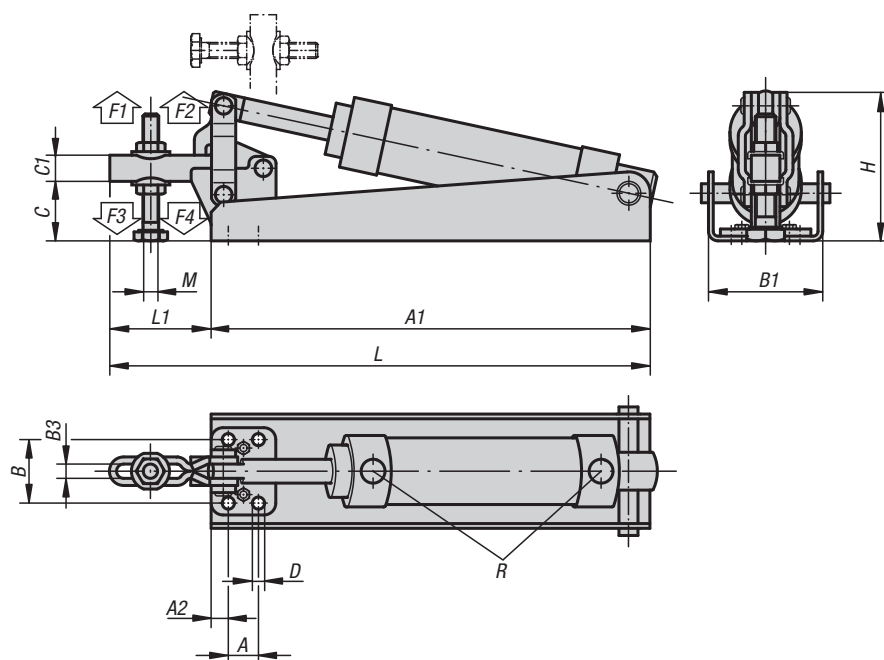
Lever parts and clamping spindle steel.

**Version:**Lever parts galvanized and chromed.  
Clamping spindle and nuts phosphated.  
Cylinder bright.**Sample order:**

K0089.0150

**Note:**A neoprene thrust pad is supplied with versions  
K0089.0075 and K0089.0150.**Accessories:**K0101  
K0102  
K0103  
K0106  
K0107**Pneumatic cylinder:**

Double-acting without end of stroke damping.



## KIPP Pneumatic clamps horizontal, Form A

Order No.	Form	Air consumption per cycle	Opening angle of holding arm	Holding force at 6 bar F1 N	Holding force at 6 bar F2 N	Clamping force at 6 bar F3 N	Clamping force at 6 bar F4 N
K0089.0075	A	0,02 dm <sup>3</sup>	70°	1000	1600	800	1400
K0089.0150	A	0,04 dm <sup>3</sup>	85°	1300	1900	1000	1600
K0089.0250	A	0,09 dm <sup>3</sup>	85°	1600	2400	1200	1800
K0089.0450	A	0,27 dm <sup>3</sup>	85°	3000	5800	2600	5400

Order No.	Form	A	A1	A2	B	B1	B3	C	C1	D	H	L	L1	M	R	Operating pressure bar	No. of strokes per min. at 6 bar
K0089.0075	A	16	145	5	24	40	5,3	18	9	4,4	50	177	32	M5x35	G 1/8	2 - 6	40
K0089.0150	A	12,7	185	7	27	48	6,4	24	11	5,1	62	227	42	M6x50	G 1/8	2 - 6	60
K0089.0250	A	19	234	8	32	59	8,9	35	17,5	7,1	84	309	75	M8x60	G 1/8	2 - 6	55
K0089.0450	A	32	289	10	45	76	12,7	54	25	8,7	122	413	124	M12x100	G 1/8	2 - 6	55

# Pneumatic clamps horizontal

Form B

**Material:**

Lever parts and clamping spindle steel.

**Version:**Lever parts galvanized and chromed.  
Clamping spindle and nuts phosphated.  
Cylinder bright.**Sample order:**

K0090.0150

**Technical data for proximity reed switch:**

Max. performance DC = 10 W / AC = 12 VA.

Max. rated voltage 10 - 60 V, DC and AC.

Max. rated power 500 mA.

**Accessories:**

K0101

K0102

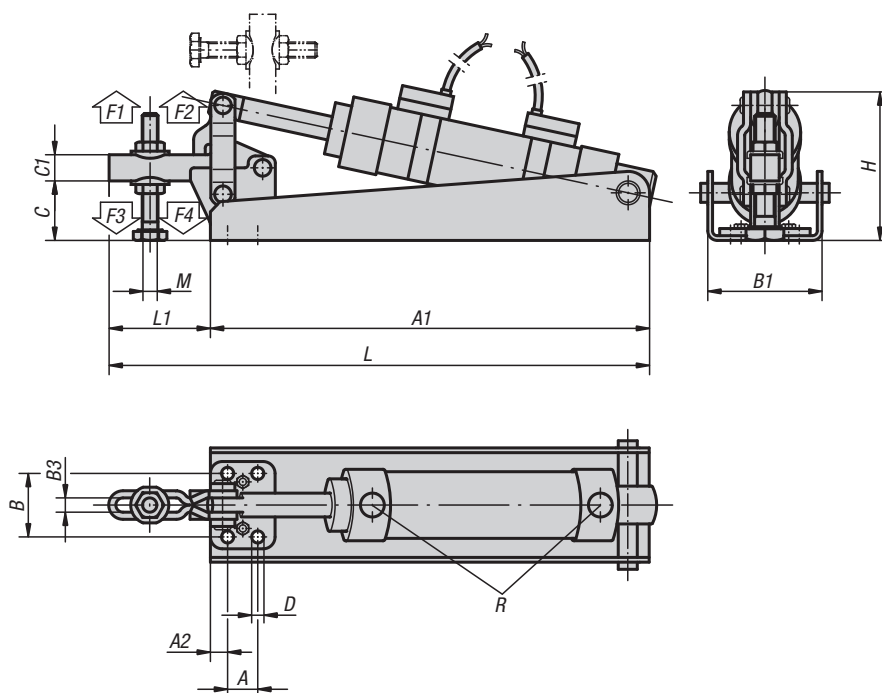
K0103

K0106

K0107

**Pneumatic cylinder:**

Double-acting without end of stroke dampening and equipped with two proximity reed switches with LED indicators.



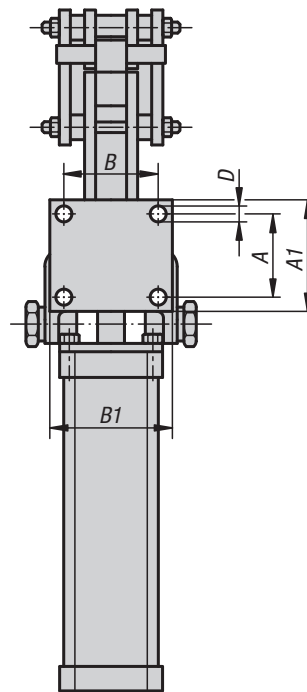
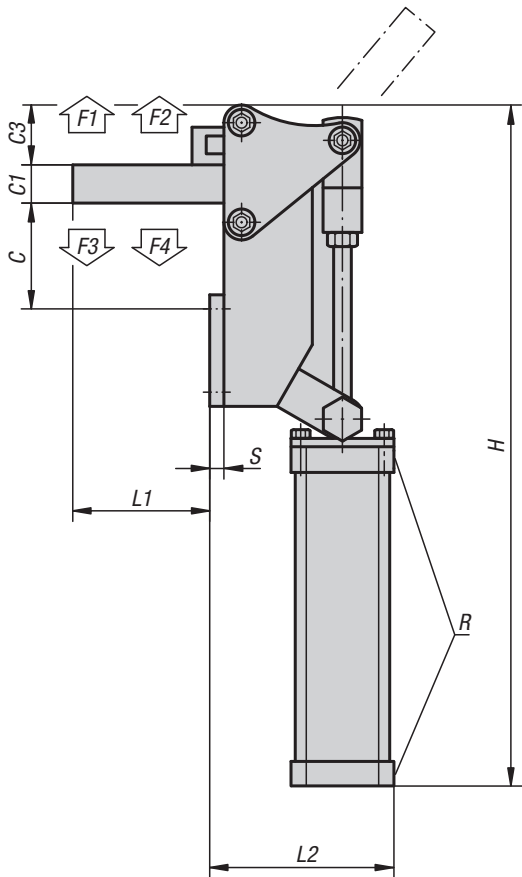
## KIPP Pneumatic clamps horizontal, Form B

Order No.	Form	Air consumption per cycle	Opening angle of holding arm	Holding force at 6 bar F1 N	Holding force at 6 bar F2 N	Clamping force at 6 bar F3 N	Clamping force at 6 bar F4 N
K0090.0075	B	0,02 dm <sup>3</sup>	70°	1000	1600	800	1400
K0090.0150	B	0,04 dm <sup>3</sup>	85°	1300	1900	1000	1600
K0090.0250	B	0,09 dm <sup>3</sup>	85°	1600	2400	1200	1800
K0090.0450	B	0,27 dm <sup>3</sup>	85°	3000	5800	2600	5400

Order No.	Form	A	A1	A2	B	B1	B3	C	C1	D	H	L	L1	M	R	Operating pressure bar	No. of strokes per min. at 6 bar
K0090.0075	B	16	145	5	24	40	5,3	18	9	4,4	50	177	32	M5x35	G 1/8	2 - 6	40
K0090.0150	B	12,7	185	7	27	48	6,4	24	11	5,1	62	227	42	M6x50	G 1/8	2 - 6	60
K0090.0250	B	19	234	8	32	59	8,9	35	17,5	7,1	84	309	75	M8x60	G 1/8	2 - 6	55
K0090.0450	B	32	289	10	45	76	12,7	54	25	8,7	122	413	124	M12x100	G 1/8	2 - 6	55

# Pneumatic clamps vertical

heavy-duty version



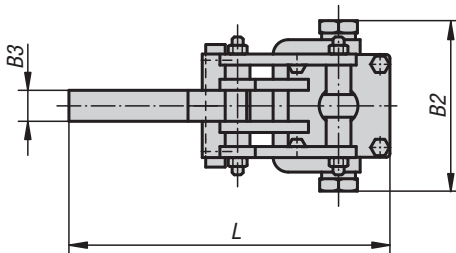
**Material:**  
Steel.

**Version:**  
Black oxidised. Cylinder painted.

**Sample order:**  
K0091.1750

**On request:**  
Proximity reed switch.

**Pneumatic cylinder:**  
Double-acting with adjustable end of stroke dampening both ways.



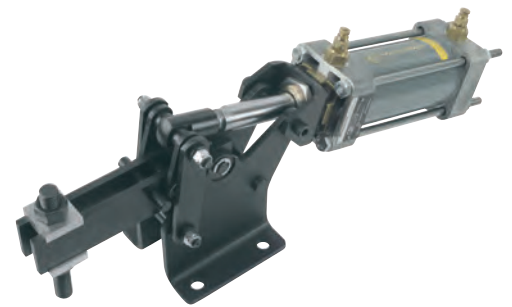
## KIPP Pneumatic clamps vertical, heavy-duty version

Order No.	Air consumption per cycle	Opening angle of holding arm	Holding force at 6 bar F1 N	Holding force at 6 bar F2 N	Clamping force at 6 bar F3 N	Clamping force at 6 bar F4 N
K0091.0750	0,27 dm <sup>3</sup>	120°	3000	7500	2250	3150
K0091.1750	0,75 dm <sup>3</sup>	120°	6500	17500	6500	8000

Order No.	A	A1	B	B1	B2	B3	C	C1	C3	D	H	L	L1	L2	S	R	Operating pressure bar	No. of strokes per min. at 6 bar
K0091.0750	48	63	48	63	92	12,7	72	19	43	8,7	425	169	67	102	8	G 1/4	2 - 6	30
K0091.1750	54,9	76,2	61,8	82,5	109,3	15,8	71,8	25,3	51,4	10,6	495,6	220,7	93,1	126,1	9,6	G 1/4	2 - 6	15

# Pneumatic clamps horizontal

heavy-duty version



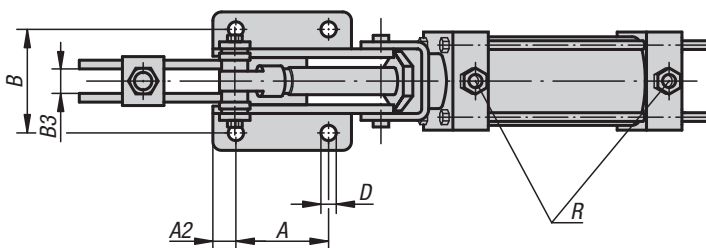
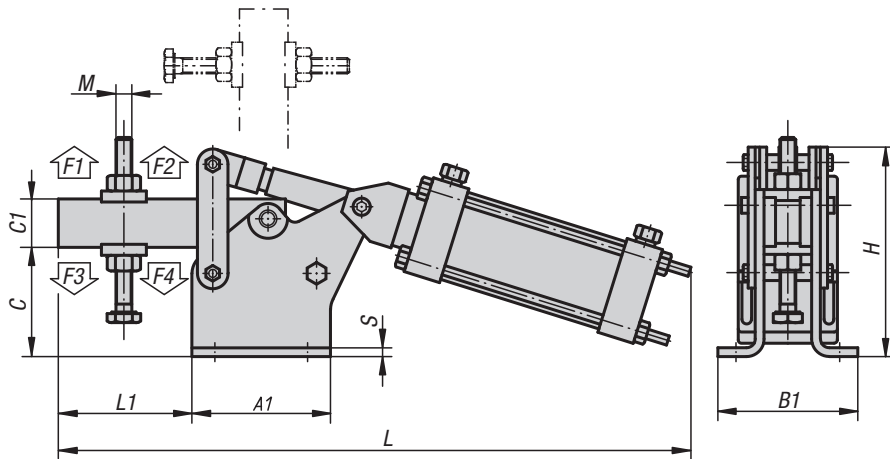
**Material:**  
Steel.

**Version:**  
Black oxidised. Cylinder painted.

**Sample order:**  
K0092.2000

**On request:**  
Proximity reed switch.

**Pneumatic cylinder:**  
Double-acting with adjustable end of stroke dampening both ways.

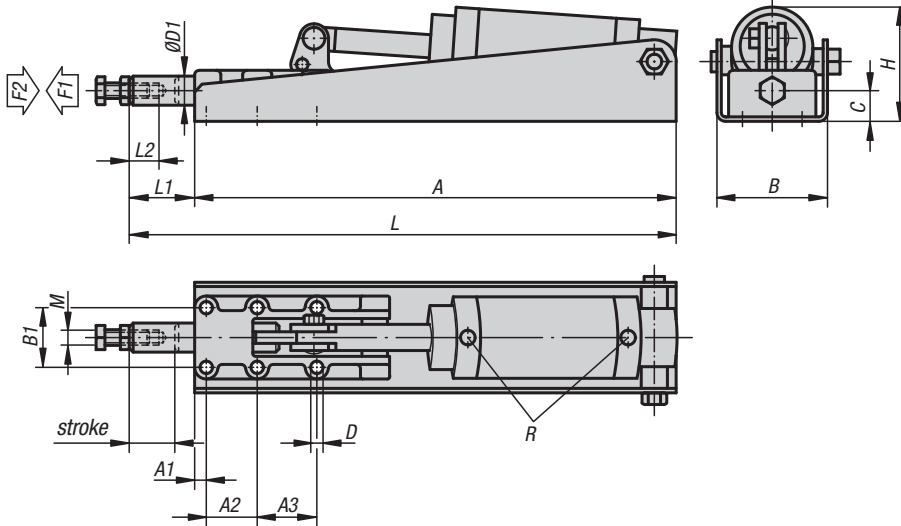


## KIPP Pneumatic clamp horizontal, heavy-duty version

Order No.	Air consumption per cycle	Opening angle of holding arm	Holding force at 6 bar F1 N	Holding force at 6 bar F2 N	Clamping force at 6 bar F3 N	Clamping force at 6 bar F4 N
K0092.2000	0,76 dm <sup>3</sup>	85°	9000	20000	6500	8000

Order No.	A	A1	A2	B	B1	B3	C	C1	D	H	L	L1	M	S	R	Operating pressure bar	No. of strokes per min. at 6 bar
K0092.2000	85	128	21	95	126	19	102	45	14,2	195	592	127	M18x150	8	G 3/8	2 - 6	10

# Pneumatic push-pull clamps



**Material:**

Lever parts, base and connecting rod in steel, connecting rod housing in spheroidal graphite cast iron (GJS)

**Version:**

Phosphated. Cylinder bright.

**Sample order:**

K0093.2500

**Accessories:**

- K0101
- K0102
- K0103
- K0106

**Pneumatic cylinder:**

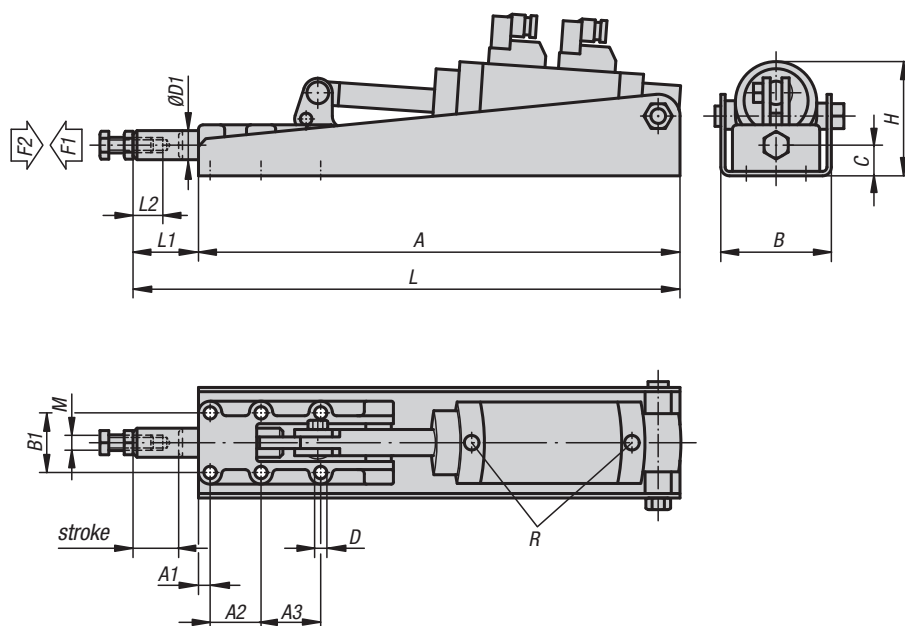
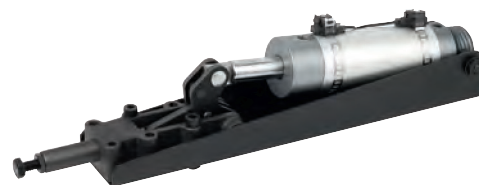
Double-acting without end of stroke dampening.

## KIPP Pneumatic push-pull clamps

Order No.	A	A1	A2	A3	B	B1	C	D	D1	H	L	L1	L2	M	R	Travel	Retaining force F2 N	Operating pressure bar	Air consumption per cycle	No. of strokes per min. at 6 bar
K0093.0600	290	25	36,5	-	59	33,4	14,5	5,5	14	53	325	41	30	M8	G 1/8	25	6000	2 - 6	0,09 dm <sup>3</sup>	60
K0093.1200	380	8	35	41	76	41	21	8,5	20	75	435	55	40	M10	G 1/8	32	12000	2 - 6	0,28 dm <sup>3</sup>	50
K0093.2500	475	12	45	45	96	54	26	10,3	25	96	577	102	60	M12	G 1/4	50	25000	2 - 6	0,60 dm <sup>3</sup>	45

Order No.	Conecting rod extended / Clamping force F1 N
K0093.0600	5mm / 320N, 10mm / 430N, 15mm / 650N, 20mm / 870N, 22mm / 1000N, 24mm / 1500N, 25mm / 2350N
K0093.1200	5mm / 1200N, 10mm / 1400N, 15mm / 1650N, 20mm / 1950N, 25mm / 2300N, 27mm / 2550N, 29mm / 3000N, 31mm / 4300N, 32mm / 11500N
K0093.2500	5mm / 1400N, 10mm / 1600N, 15mm / 1750N, 20mm / 2000N, 25mm / 2100N, 30mm / 2450N, 35mm / 2650N, 40mm / 3250N, 45mm / 4200N, 47mm / 4900N, 49mm / 7000N, 50mm / 14500N

# Pneumatic push-pull clamps


**Material:**

Lever parts, base and connecting rod in steel, connecting rod housing in spheroidal graphite cast iron (GJS)

**Version:**

Phosphated. Cylinder bright.

**Sample order:**

K0094.2500

**Technical data for proximity reed switch:**

Max. performance DC = 10 W / AC = 12 VA.  
 Max. rated voltage 10 - 60 V, DC and AC.  
 Max. rated power 500 mA.

**Accessories:**

K0101  
 K0102  
 K0103  
 K0106

**Pneumatic cylinder:**

Double-acting without end of stroke dampening and equipped with two proximity reed switches with LED indicators.

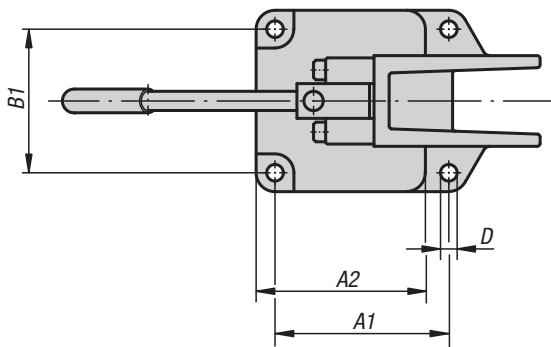
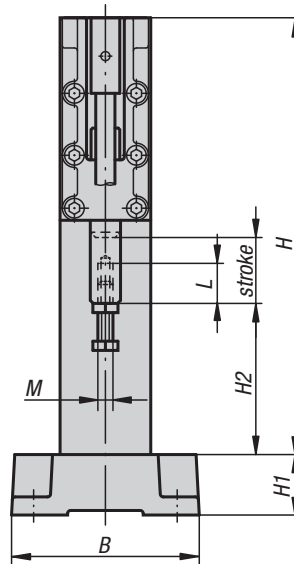
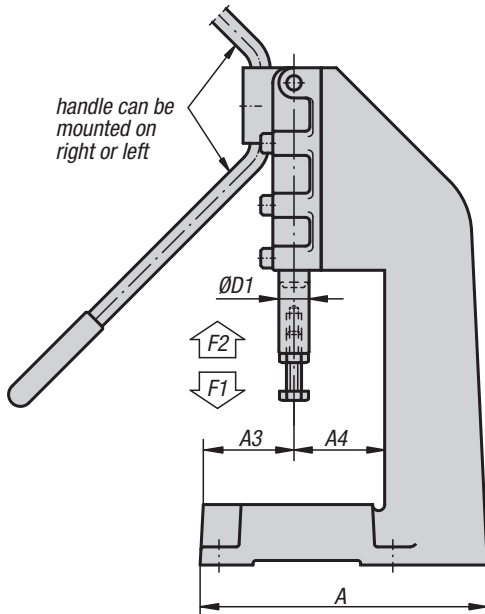
## KIPP Pneumatic push-pull clamps

Order No.	A	A1	A2	A3	B	B1	C	D	D1	H	L	L1	L2	M	R	Travel	Retaining force F2 N	Operating pressure bar	Air consumption per cycle	No. of strokes per min. at 6 bar
K0094.0600	290	25	36,5	-	59	33,4	14,5	5,5	14	53	325	41	30	M8	G 1/8	25	6000	2 - 6	0,09 dm <sup>3</sup>	60
K0094.1200	380	8	35	41	76	41	21	8,5	20	75	435	55	40	M10	G 1/8	32	12000	2 - 6	0,28 dm <sup>3</sup>	50
K0094.2500	475	12	45	45	96	54	26	10,3	25	96	577	102	60	M12	G 1/4	50	25000	2 - 6	0,60 dm <sup>3</sup>	45

Order No.	Conecting rod extended / Clamping force F1 N
K0094.0600	5mm / 320N, 10mm / 430N, 15mm / 650N, 20mm / 870N, 22mm / 1000N 24mm / 1500N, 25mm / 2350N
K0094.1200	5mm / 1200N, 10mm / 1400N, 15mm / 1650N, 20mm / 1950N, 25mm / 2300N, 27mm / 2550N, 29mm / 3000N, 31mm / 4300, 32mm / 11500N
K0094.2500	5mm / 1400N, 10mm / 1600N, 15mm / 1750N 20mm / 2000N, 25mm / 2100N, 30mm / 2450N, 35mm / 2650N, 40mm / 3250N, 45mm / 4200N, 47mm / 4900N, 49mm / 7000N, 50mm / 14500N

# Toggle presses

for manual operation



**Material:**

Press stand in cast steel, push-pull clamp see K0088

**Version:**

Press stand painted black, push-pull clamp see K0088

**Sample order:**

K0095.0600

**Note:**

Push-pull clamps with reversible hand lever can be reordered as a complete assembly kit. See K0088 for specifications.

**Accessories:**

- K0088
- K0099
- K0101
- K0102
- K0103
- K0106

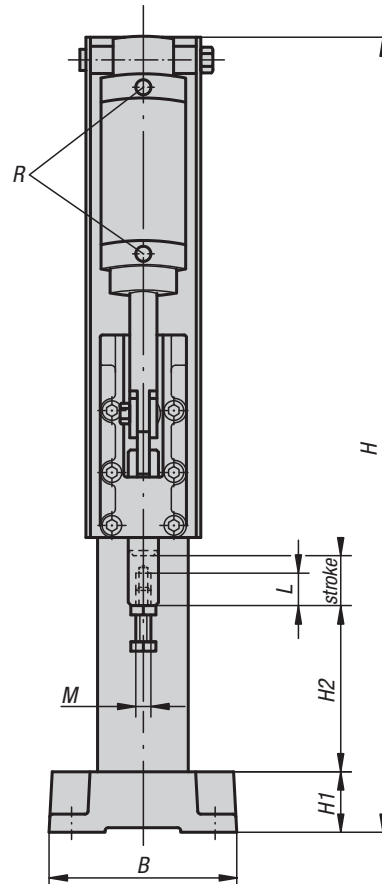
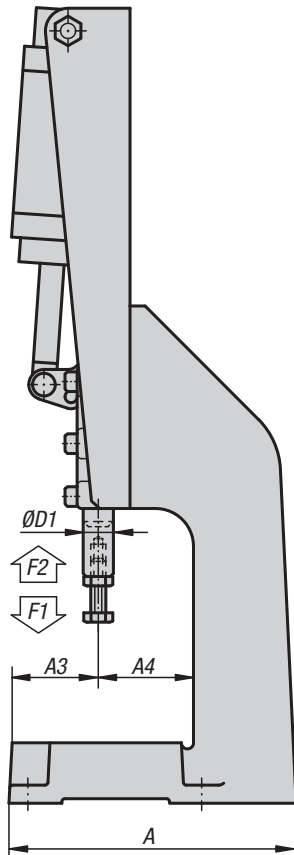
## KIPP Toggle presses for manual operation

Order No.	A	A1	A2	A3	A4	B	B1	D	D1	H	H1	H2	L	M	Travel	Hand force N	Retaining force F2 N	Opening angle of handle
K0095.0600	150	95	94	50	50	100	80	9	14	202	30	75	30	M8	32	140	6000	185°
K0095.1200	192	115	112	60	60	120	95	11	20	290	40	100	40	M10	50	150	12000	185°
K0095.2500	238	145	142	75	75	150	125	11	25	418	50	120	60	M12	75	170	25000	185°

Order No.	Conecting rod extended / Clamping force F1 N
K0095.0600	5 mm / 1100 N, 10 mm / 700N, 15mm / 750N, 20mm / 800N, 25mm / 850N, 30mm / 1460N, 31mm / 1900N, 32mm / 5800N
K0095.1200	5 mm / 1670 N, 10 mm / 900N, 15mm / 730N, 20mm / 700N, 25mm / 720N, 30mm / 850N, 35mm / 1000N, 40mm / 1100N, 45mm / 1500N, 48mm / 2200N, 49mm / 2900N, 50mm / 9300N
K0095.2500	10 mm / 1000N, 20mm / 720N, 30mm / 600N, 40mm / 700N, 50mm / 880N, 60mm / 1180N, 70mm / 1900N, 72mm / 2300N, 74mm / 3530N, 75mm / 11000N

# Toggle presses

for pneumatic operation



**Material:**

Press stand in cast steel,  
pneumatic push-pull clamp see K0093, K0094

**Version:**

Press stand painted black,  
pneumatic push-pull clamp see K0093, K0094

**Sample order:**

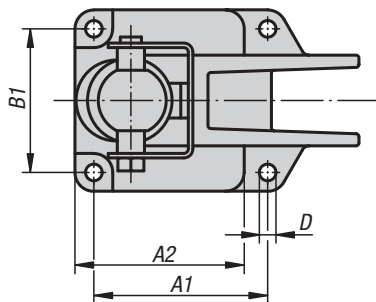
K0096.0600

**Note:**

Double-acting cylinder without end position damping. Pneumatic push-pull clamps can be reordered as a complete assembly kit. See K0093, K0094 for specifications and clamping forces.

**Accessories:**

K0093  
K0094  
K0101  
K0102  
K0103  
K0106



## KIPP Toggle presses for pneumatic operation

Order No.	A	A1	A2	A3	A4	B	B1	D	D1	H	H1	H2	L	M	R	Travel	Retaining force F2 N	Operating pressure bar	Air consumption per cycle	No. of strokes per min. at 6 bar
K0096.0600	150	95	94	48	52	100	80	9	14	432	30	75	30	M8	G 1/8	25	6000	2 - 6	0,09 dm <sup>3</sup>	60
K0096.1200	192	115	112	57	63	120	95	11	20	575	40	100	40	M10	G 1/8	32	12000	2 - 6	0,28 dm <sup>3</sup>	50
K0096.2500	238	145	142	71	79	150	125	11	25	748	50	120	60	M12	G 1/4	50	25000	2 - 6	0,60 dm <sup>3</sup>	45