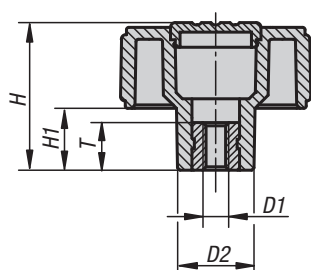


Knurled knobs



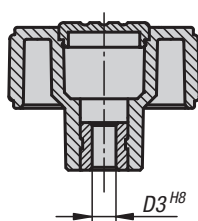
Form D
tapped bush
without cap

Form K
tapped bush
with cap

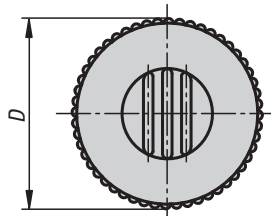
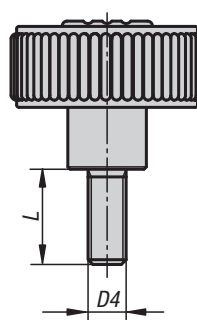


Form E
reamed bush
without cap

Form H
reamed bush
with cap



Form L
external thread



Novo-Grip knurled knobs are characterized by their wide range of applications and outstanding design. The ergonomically designed knurled wheel guarantees absolutely secure and perfect handling.

Material:

Thermoplastic, black grey.
Bush or screw steel 5.8.

Version:

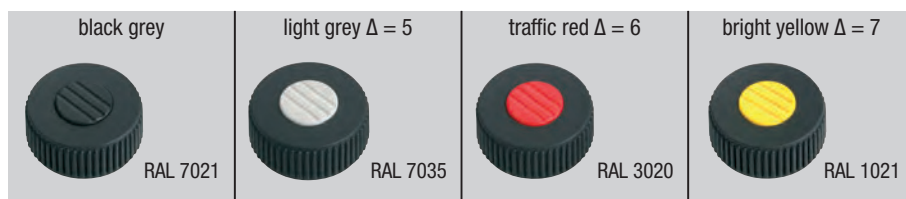
Blue chromed steel.

Sample order:

K0260.41067
(cap colour bright yellow.)

Note:

Δ Add the desired cap colour here.
No colour code is required for black grey caps.



KIPP Knurled knobs with internal thread, Form D

Order No.	Form	Version	Size	D	D1	D2	H	H1	T
K0260.1105	D	bush steel	1	40	M5	16,5	31	13	10
K0260.1106	D	bush steel	1	40	M6	16,5	31	13	10
K0260.1108	D	bush steel	1	40	M8	16,5	31	13	14
K0260.1208	D	bush steel	2	50	M8	18	36	15	14
K0260.1210	D	bush steel	2	50	M10	18	36	15	14
K0260.1310	D	bush steel	3	63	M10	22	41	17	14
K0260.1312	D	bush steel	3	63	M12	22	41	17	18

Knurled knobs



KIPP Knurled knobs with internal thread, Form K

Order No.	Form	Version	Size	D	D1	D2	H	H1	T
K0260.2105Δ	K	bush steel	1	40	M5	16,5	31	13	10
K0260.2106Δ	K	bush steel	1	40	M6	16,5	31	13	10
K0260.2108Δ	K	bush steel	1	40	M8	16,5	31	13	14
K0260.2208Δ	K	bush steel	2	50	M8	18	36	15	14
K0260.2210Δ	K	bush steel	2	50	M10	18	36	15	14
K0260.2310Δ	K	bush steel	3	63	M10	22	41	17	14
K0260.2312Δ	K	bush steel	3	63	M12	22	41	17	18

KIPP Knurled knobs with reamed bush, Form E

Order No.	Form	Version	Size	D	D2	D3	H	H1	T
K0260.3106	E	bush steel	1	40	16,5	6	31	13	10
K0260.3208	E	bush steel	2	50	18	8	36	15	14
K0260.3310	E	bush steel	3	63	22	10	41	17	14

KIPP Knurled knobs with reamed bush, Form H

Order No.	Form	Version	Size	D	D2	D3	H	H1	T
K0260.4106Δ	H	bush steel	1	40	16,5	6	31	13	10
K0260.4208Δ	H	bush steel	2	50	18	8	36	15	14
K0260.4310Δ	H	bush steel	3	63	22	10	41	17	14

KIPP Knurled knobs with external thread, Form L

Order No.	Form	Version	Size	D	D2	D4	H	H1	L
K0260.5105ΔX	L	screw steel	1	40	16,5	M5	31	13	10/20/40
K0260.5106ΔX	L	screw steel	1	40	16,5	M6	31	13	10/20/40
K0260.5108ΔX	L	screw steel	1	40	16,5	M8	31	13	15/30/60
K0260.5208ΔX	L	screw steel	2	50	18	M8	36	15	15/30/60
K0260.5210ΔX	L	screw steel	2	50	18	M10	36	15	20/30/60
K0260.5310ΔX	L	screw steel	3	63	22	M10	41	17	20/30/60
K0260.5312ΔX	L	screw steel	3	63	22	M12	41	17	30/60

Knurled knobs

metal parts stainless steel



Novo-Grip knurled knobs are characterized mainly by their wide range of applications and their outstanding design. The ergonomically designed knurled wheel guarantees absolutely secure and perfect handling.

Material:

Thermoplastic, black grey.
Bush and screw stainless steel 1.4305.

Version:

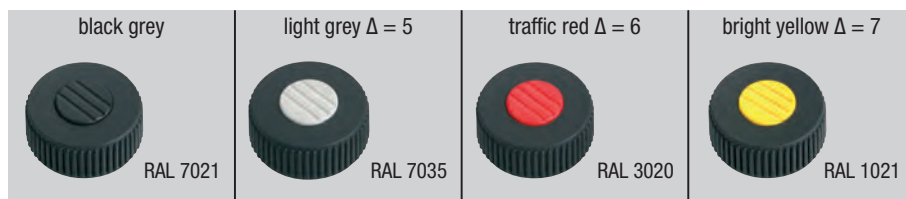
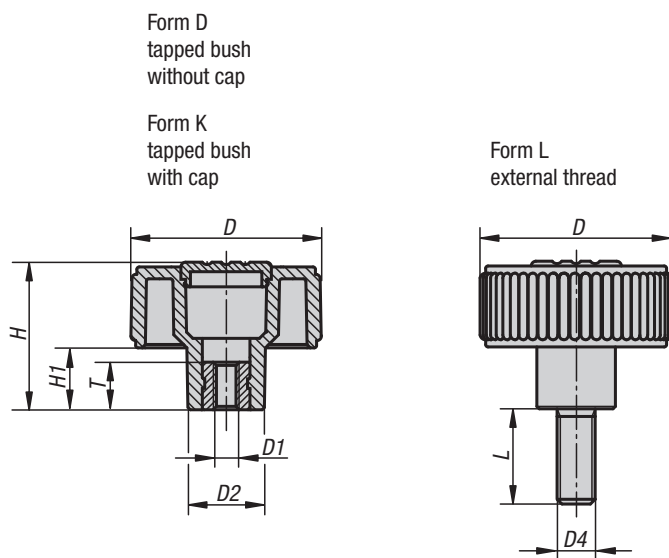
Stainless steel bright.

Sample order:

K0261.51056X10
(cap colour traffic red; include length L.)

Note:

Δ Add the desired cap colour here. No colour code is required for black grey caps.



KIPP Knurled knobs with internal thread, metal parts stainless steel, Form D

Order No.	Form	Version	Size	D	D1	D2	H	H1	T
K0261.1105	D	bush stainless steel	1	40	M5	16,5	31	13	10
K0261.1106	D	bush stainless steel	1	40	M6	16,5	31	13	10
K0261.1108	D	bush stainless steel	1	40	M8	16,5	31	13	14
K0261.1208	D	bush stainless steel	2	50	M8	18	36	15	14
K0261.1210	D	bush stainless steel	2	50	M10	18	36	15	14
K0261.1310	D	bush stainless steel	3	63	M10	22	41	17	14
K0261.1312	D	bush stainless steel	3	63	M12	22	41	17	18

Knurled knobs

metal parts stainless steel



KIPP Knurled knobs with internal thread, metal parts stainless steel, Form K

Order No.	Form	Version	Size	D	D1	D2	H	H1	T
K0261.2105Δ	K	bush stainless steel	1	40	M5	16,5	31	13	10
K0261.2106Δ	K	bush stainless steel	1	40	M6	16,5	31	13	10
K0261.2108Δ	K	bush stainless steel	1	40	M8	16,5	31	13	14
K0261.2208Δ	K	bush stainless steel	2	50	M8	18	36	15	14
K0261.2210Δ	K	bush stainless steel	2	50	M10	18	36	15	14
K0261.2310Δ	K	bush stainless steel	3	63	M10	22	41	17	14
K0261.2312Δ	K	bush stainless steel	3	63	M12	22	41	17	18

KIPP Knurled knobs with external thread, metal parts stainless steel, Form L

Order No.	Form	Version	Size	D	D2	D4	H	H1	L
K0261.5105ΔX	L	screw stainless steel	1	40	16,5	M5	31	13	10/20
K0261.5106ΔX	L	screw stainless steel	1	40	16,5	M6	31	13	10/20/40
K0261.5108ΔX	L	screw stainless steel	1	40	16,5	M8	31	13	15/30/60
K0261.5208ΔX	L	screw stainless steel	2	50	18	M8	36	15	15/30/60
K0261.5210ΔX	L	screw stainless steel	2	50	18	M10	36	15	20/30/60
K0261.5310ΔX	L	screw stainless steel	3	63	22	M10	41	17	20/30/60

Mushroom knobs

internal thread



Material:

Steel, stainless steel and aluminium.

Version:

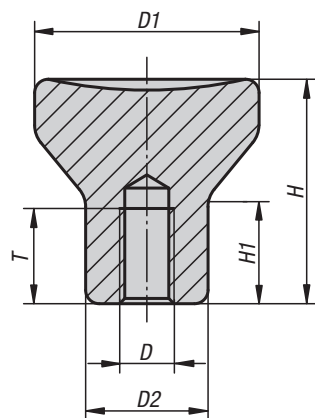
Steel galvanised and blue chromed.
Stainless steel, electropolished or blasted.
Aluminium natural tone anodized.

Sample order:

K0250.104

On request:

With external threads.



KIPP Mushroom knobs with internal thread

Order No.	Material	Version	D	D1	D2	H	H1	T
K0250.0902	steel	galvanized and blue chromed	M2	14	8	14	6,7	4
K0250.0003	steel	galvanized and blue chromed	M3	18	10	18	8,6	7,5
K0250.0104	steel	galvanized and blue chromed	M4	21	12	21	10	10
K0250.0105	steel	galvanized and blue chromed	M5	21	12	21	10	12,5
K0250.0206	steel	galvanized and blue chromed	M6	25	14	25	12	12
K0250.0308	steel	galvanized and blue chromed	M8	33	18	33	16	16
K0250.0410	steel	galvanized and blue chromed	M10	40	24	40	18,7	20
K0250.902	stainless steel	electropolished	M2	14	8	14	6,7	4
K0250.003	stainless steel	electropolished	M3	18	10	18	8,6	7,5
K0250.104	stainless steel	electropolished	M4	21	12	21	10	10
K0250.105	stainless steel	electropolished	M5	21	12	21	10	12,5
K0250.206	stainless steel	electropolished	M6	25	14	25	12	12
K0250.308	stainless steel	electropolished	M8	33	18	33	16	16
K0250.410	stainless steel	electropolished	M10	40	24	40	18,7	20
K0250.1902	Aluminium	natural colour anodized	M2	14	8	14	6,7	4
K0250.1003	Aluminium	natural colour anodized	M3	18	10	18	8,6	7,5
K0250.1104	Aluminium	natural colour anodized	M4	21	12	21	10	10
K0250.1105	Aluminium	natural colour anodized	M5	21	12	21	10	12,5
K0250.1206	Aluminium	natural colour anodized	M6	25	14	25	12	12
K0250.1308	Aluminium	natural colour anodized	M8	33	18	33	16	16
K0250.1410	Aluminium	natural colour anodized	M10	40	24	40	18,7	20
K0250.2902	stainless steel	blasted	M2	14	8	14	6,7	4
K0250.2003	stainless steel	blasted	M3	18	10	18	8,6	7,5
K0250.2104	stainless steel	blasted	M4	21	12	21	10	10
K0250.2105	stainless steel	blasted	M5	21	12	21	10	12,5
K0250.2206	stainless steel	blasted	M6	25	14	25	12	12
K0250.2308	stainless steel	blasted	M8	33	18	33	16	16
K0250.2410	stainless steel	blasted	M10	40	24	40	18,7	20

Notes



Mushroom knobs

internal thread



Novo-Grip mushroom knobs provide a special form of gripping: absolutely secure, quick and easy. This new form of gripping represented by the Novo-Grip mushroom knob is unique. Find out for yourself!

Material:

Thermoplastic, black grey.
Bush steel 5.8 or
stainless steel 1.4305.

Version:

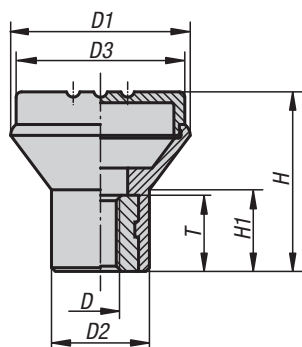
Blue-chromed steel or bright stainless steel.

Sample order:

K0251.046 (cap colour traffic red.)

Note:

Δ Add the desired cap colour here. No colour code is required for black grey caps.



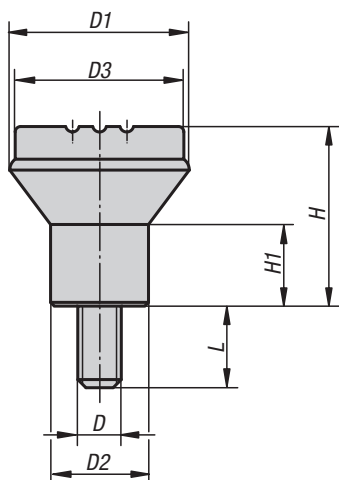
black grey	light grey Δ = 5	traffic red Δ = 6	bright yellow Δ = 7
			
RAL 7021	RAL 7035	RAL 3020	RAL 1021

KIPP Mushroom knobs with internal thread

Order No. bush steel	Order No. bush stainless steel	Size	D	D1	D2	D3	H	H1	T
K0251.04Δ	K0251.004Δ	1	M4	21	12	19	21	10	10
K0251.05Δ	K0251.005Δ	1	M5	21	12	19	21	10	10
K0251.06Δ	K0251.006Δ	2	M6	25	14	23	25	12	10
K0251.08Δ	K0251.008Δ	3	M8	33	19	31	33	15	14

Mushroom knobs

external thread



Novo-Grip mushroom knobs provide a special form of gripping: absolutely secure, quick and easy. This new form of gripping represented by the Novo-Grip mushroom knob is unique. Find out for yourself!

Material:

Thermoplastic, black grey.
Screw steel 5.8 or
stainless steel 1.4305.

Version:





Steel blue-chromed or
stainless steel bright.

Sample order:

K0251.046X10 (cap colour traffic red; include length L)

Note:

Δ Add the desired cap colour here. No colour code is required for black grey caps.

black grey	light grey Δ = 5	traffic red Δ = 6	bright yellow Δ = 7
			
RAL 7021	RAL 7035	RAL 3020	RAL 1021

KIPP Mushroom knobs with external thread

Order No. screw steel	Order No. screw stainless steel	Size	D	D1	D2	D3	H	H1	L
K0251.04ΔX10	K0251.004ΔX10	1	M4	21	12	19	21	10	10
K0251.05ΔX10	K0251.005ΔX10	1	M5	21	12	19	21	10	10
K0251.06ΔX15	K0251.006ΔX15	2	M6	25	14	23	25	12	15
K0251.08ΔX15	K0251.008ΔX15	3	M8	33	19	31	33	15	15

Mushroom knobs biopolymer

internal thread



Material:

Biopolymer, beech.
Bush steel 5.8

Version:

Bush galvanized and blue chromed.
Natural beech with beech fibres or coloured black grey.

Sample order:

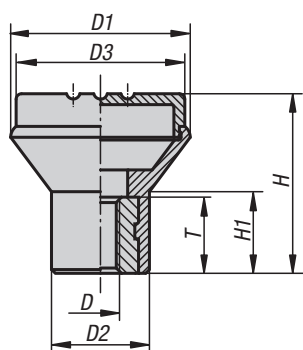
K0251.1005143

Advantages:

This biopolymer is manufactured entirely from renewable raw materials (oil free).
Conservation of finite fossil resources.
The wood fibres originate 100% from local forests in Germany.
PEFC certified (guarantees that wood products originate from sustainably managed forests).

Characteristics:

Excellent mechanical stability (certified with a minimum of 2x safety factor).
Biopolymer is suitable for recycling (comparable to thermoplastics).
Suitable for outdoor use (not biodegradable).
Excellent resistance to strong acids and lyes.
Short-term resistance to alcohol, fuel, mineral oil and grease.

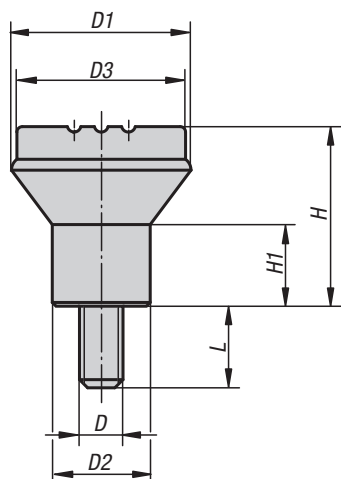


KIPP Mushroom knobs biopolymer with internal thread

Order No.	Colour	Size	D	D1	D2	D3	H	H1	T
K0251.1005143	natural beech	1	M5	21	12	19	21	10	10
K0251.1006143	natural beech	2	M6	25	14	23	25	12	10
K0251.1008143	natural beech	3	M8	33	19	33	33	15	14
K0251.100590	black grey	1	M5	21	12	19	21	10	10
K0251.100690	black grey	2	M6	25	14	23	25	12	10
K0251.100890	black grey	3	M8	33	19	33	33	15	14

Mushroom knobs biopolymer

external thread



Material:

Biopolymer, beech.
Threaded pin steel 5.8.

Version:

Threaded pin galvanized and blue chromed.
Natural beech with beech fibres or coloured black grey.

Sample order:

K0251.100590X10

Advantages:

This biopolymer is manufactured entirely from renewable raw materials (oil free).
Conservation of finite fossil resources.
The wood fibres originate 100% from local forests in Germany.
PEFC certified (guarantees that wood products originate from sustainably managed forests).

Characteristics:

Excellent mechanical stability (certified with a minimum of 2x safety factor).
Biopolymer is suitable for recycling (comparable to thermoplastics).
Suitable for outdoor use (not biodegradable).
Excellent resistance to strong acids and lyes.
Short-term resistance to alcohol, fuel, mineral oil and grease.

KIPP Mushroom knobs biopolymer with external thread

Order No.	Colour	Size	D	D1	D2	D3	H	H1	L
K0251.1005143X10	natural beech	1	M5	21	12	19	21	10	10
K0251.1006143X15	natural beech	2	M6	25	14	23	25	12	15
K0251.1008143X15	natural beech	3	M8	33	19	33	33	15	15
K0251.100590X10	black grey	1	M5	21	12	19	21	10	10
K0251.100690X15	black grey	2	M6	25	14	23	25	12	15
K0251.100890X15	black grey	3	M8	33	19	33	33	15	15

Mushroom knobs antibacterial

internal thread, metal parts stainless steel



Material:

Thermoplastic, slate grey.
Bush stainless steel 1.4305.

Version:

Stainless steel bright.

Sample order:

K0251.12005144

Application:

The antibacterial KIPP MEDI grip products are highly effective against a variety of hazardous microorganisms, such as bacteria, fungi, viruses and even multi-resistant bacteria (e.g. MRSA). The plastic used incorporates micro-silver particles with an antimicrobial effect to ensure effective results throughout the entire product life cycle.

Function:

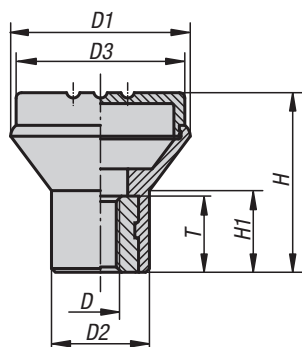
Silver ions are effective in preventing harmful microorganisms from forming on the product surface, promoting a constant reduction of the existing germs on the MEDI grip products (as tested and confirmed by an accredited testing laboratory). During cleaning cycles the risk of infection while touching these products is significantly lower.

Advantages:

Resistant to humidity and cleaning products (during disinfection) with no toxic side effects.

Applications:

For installation on machines, equipment, plants and furnishings in areas with increased hygienic requirements (including hospitals, doctors' surgeries, rehabilitation centres and food production facilities), as well as for use in public areas or regularly frequented institutions (i.e. nursing homes or daycare centres).



KIPP Mushroom knobs antibacterial internal thread, metal parts stainless steel

Order No.	Version	Size	D	D1	D2	D3	H	H1	T
K0251.12005144	bush stainless steel	1	M5	21	12	19	21	10	10

Mushroom knobs antibacterial

external thread, metal parts stainless steel



Material:

Thermoplastic, slate grey.

Threaded pin stainless steel 1.4305.

Version:

Stainless steel bright.

Sample order:

K0251.12005144X10

Application:

The antibacterial KIPP MEDI grip products are highly effective against a variety of hazardous microorganisms, such as bacteria, fungi, viruses and even multi-resistant bacteria (e.g. MRSA).

The plastic used incorporates micro-silver particles with an antimicrobial effect to ensure effective results throughout the entire product life cycle.

Function:

Silver ions are effective in preventing harmful microorganisms from forming on the product surface, promoting a constant reduction of the existing germs on the MEDI grip products (as tested and confirmed by an accredited testing laboratory).

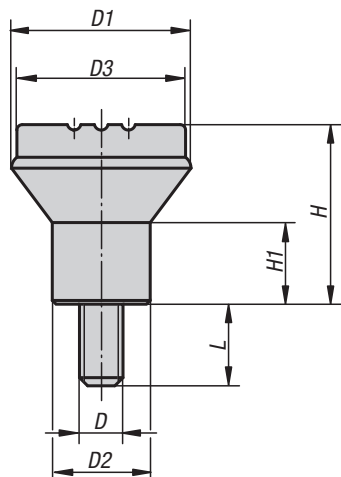
During cleaning cycles the risk of infection while touching these products is significantly lower.

Advantages:

Resistant to humidity and cleaning products (during disinfection) with no toxic side effects.

Applications:

For installation on machines, equipment, plants and furnishings in areas with increased hygienic requirements (including hospitals, doctors' surgeries, rehabilitation centres and food production facilities), as well as for use in public areas or regularly frequented institutions (i.e. nursing homes or daycare centres).

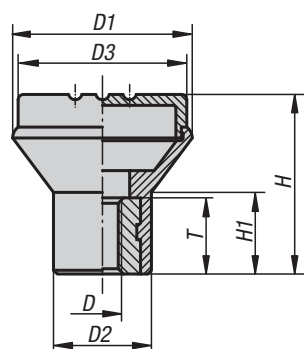


KIPP Mushroom knobs antibacterial, external thread, metal parts stainless steel

Order No.	Version	Size	D	D1	D2	D3	H	H1	L
K0251.12005144X10	screw stainless steel	1	M5	21	12	19	21	10	10

Mushroom knobs antistatic

internal thread



Material:

Thermoplastic, graphite black.
Bush steel 5.8.

Version:

Bush, blue chromed.

Sample order:

K0251.110524

Application:

Sensitive electrical or electronic equipment, components and devices (ESD sensitive elements) may be damaged or destroyed by electrostatic discharges (ESD) in the immediate vicinity.

Electrostatic discharges can come from people or through handling ESD sensitive components (e.g. during production, assembly, transport, storage etc). Electrically conductive products which conform to DIN EN 61340-5-1 are essential within electronic environments to prevent an electrostatic discharge. These products can be used for ESD applications or in ESD protection areas (EPA) in accordance with DIN EN 61340-5-1.

The yellow ESD logo is printed on the side of the product to clearly identify it.

Safety:

These ESD products can also be used for devices, components and protection systems in areas with high risk of explosion.

Use of these ESD products prevents the occurrence of electrostatic spark discharges, eliminating the potential ignition of gases and dusts which could lead to explosions in enclosed spaces.

Manufacturers and operators must use and conform to ATEX directives for the protection of persons working in areas with high risk of explosion.

These ESD products are certified by TÜV-Süd in relation to their electrical discharge capability.

Target groups:

Device manufacturers required to conform to ATEX product directive 2014/34/EU.

Operators required to conform to ATEX worker protection directive 1999/92/EC.

KIPP Mushroom knobs antistatic internal thread

Order No.	Colour	Size	D	D1	D2	D3	H	H1	T
K0251.110524	graphite black	1	M5	21	12	19	21	10	10

Mushroom knobs antistatic

external thread



Material:

Thermoplastic, graphite black.
Threaded pin steel 5.8.

Version:

Threaded pin, blue chromed.

Sample order:

K0251.110524X10

Application:

Sensitive electrical or electronic equipment, components and devices (ESD sensitive elements) may be damaged or destroyed by electrostatic discharges (ESD) in the immediate vicinity.

Electrostatic discharges can come from people or through handling ESD sensitive components (e.g. during production, assembly, transport, storage etc).

Electrically conductive products which conform to DIN EN 61340-5-1 are essential within electronic environments to prevent an electrostatic discharge. These products can be used for ESD applications or in ESD protection areas (EPA) in accordance with DIN EN 61340-5-1.

The yellow ESD logo is printed on the side of the product to clearly identify it.

Safety:

These ESD products can also be used for devices, components and protection systems in areas with high risk of explosion.

Use of these ESD products prevents the occurrence of electrostatic spark discharges, eliminating the potential ignition of gases and dusts which could lead to explosions in enclosed spaces.

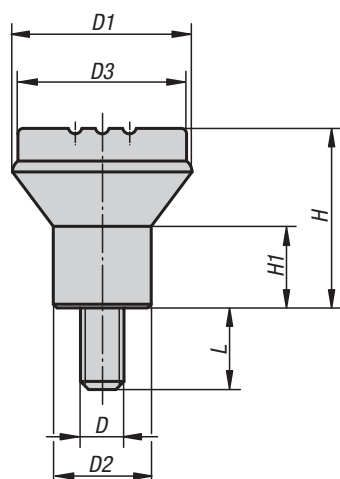
Manufacturers and operators must use and conform to ATEX directives for the protection of persons working in areas with high risk of explosion.

These ESD products are certified by TÜV-Süd in relation to their electrical discharge capability.

Target groups:

Device manufacturers required to conform to ATEX product directive 2014/34/EU.

Operators required to conform to ATEX worker protection directive 1999/92/EC.



KIPP Mushroom knobs antistatic external thread

Order No.	Colour	Size	D	D1	D2	D3	H	H1	L
K0251.110524X10	graphite black	1	M5	21	12	19	21	10	10

Wing grips

internal thread, stainless steel


Material:

Stainless steel 1.4308.

Version:

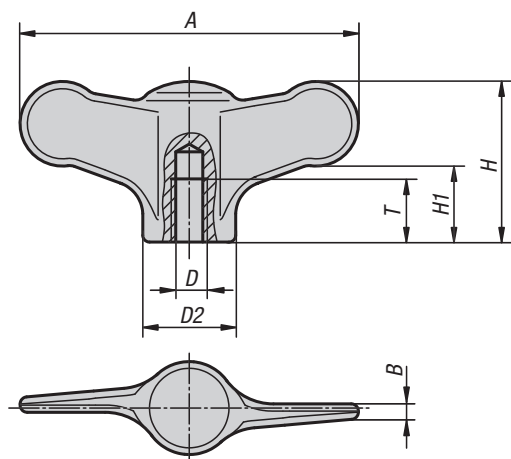
Blasted or ground and polished.

Sample order:

K0273.105

On request:

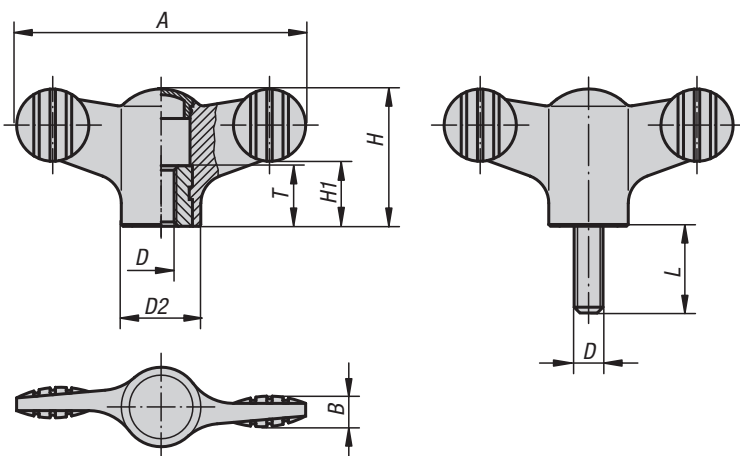
With external threads.



KIPP Wing grips with internal thread, stainless steel

Order No.	Version	D	D2	A	B	H	H1	T
K0273.904	ground and polished	M4	10,5	38	1,7	18	8,5	9
K0273.905	ground and polished	M5	10,5	38	1,7	18	8,5	9
K0273.906	ground and polished	M6	10,5	38	1,7	18	8,5	9
K0273.105	ground and polished	M5	14	50	2,3	24	11,5	12
K0273.106	ground and polished	M6	14	50	2,3	24	11,5	12
K0273.208	ground and polished	M8	21	75	3,4	35	16,5	15
K0273.210	ground and polished	M10	21	75	3,4	35	16,5	15
K0273.9041	blasted	M4	10,5	38	1,7	18	8,5	9
K0273.9051	blasted	M5	10,5	38	1,7	18	8,5	9
K0273.9061	blasted	M6	10,5	38	1,7	18	8,5	9
K0273.1051	blasted	M5	14	50	2,3	24	11,5	12
K0273.1061	blasted	M6	14	50	2,3	24	11,5	12
K0273.2081	blasted	M8	21	75	3,4	35	16,5	15
K0273.2101	blasted	M10	21	75	3,4	35	16,5	15

Wing grips



For many people the modern Novo-Grip wing grips represent the perfect constructive and technical solution for absolutely “natural” gripping. It enables more comfortable handling than ever before.

Material:

Grip black grey thermoplastic.

Bush and screw steel 5.8 or stainless steel 1.4305.

Version:

Bush or screw blue chromed or bright stainless steel.

Sample order:

K0274.1057X20 (cap colour bright yellow; include length L)

Note:

Δ Add the desired cap colour here. No colour code is required for black grey caps.



KIPP Wing grips with internal thread

Order No. bush steel	Order No. bush stainless steel	D	D2	A	B	H	H1	T
K0274.904Δ	K0274.0904Δ	M4	12	38	4,5	18	8,5	10
K0274.905Δ	K0274.0905Δ	M5	12	38	4,5	18	8,5	10
K0274.906Δ	K0274.0906Δ	M6	12	38	4,5	18	8,5	10
K0274.105Δ	K0274.0105Δ	M5	14	50	5	24	11,5	10
K0274.106Δ	K0274.0106Δ	M6	14	50	5	24	11,5	10
K0274.208Δ	K0274.0208Δ	M8	21	75	7	35,6	16,5	14
K0274.210Δ	K0274.0210Δ	M10	21	75	7	35,6	16,5	14

KIPP Wing grips with external thread

Order No. screw steel	Order No. screw stainless steel	D	A	B	D2	H	H1	L
K0274.904ΔX	K0274.0904ΔX	M4	38	4,5	12	18	8,5	10/15
K0274.905ΔX	K0274.0905ΔX	M5	38	4,5	12	18	8,5	15/20/30
K0274.906ΔX	K0274.0906ΔX	M6	38	4,5	12	18	8,5	20/30/40
K0274.105ΔX	K0274.0105ΔX	M5	50	5	14	24	11,5	15/20
K0274.106ΔX	K0274.0106ΔX	M6	50	5	14	24	11,5	20/30/40
K0274.108ΔX	K0274.0108ΔX	M8	50	5	14	24	11,5	20/30/40
K0274.208ΔX	K0274.0208ΔX	M8	75	7	21	35,6	16,5	20/30/40
K0274.210ΔX	K0274.0210ΔX	M10	75	7	21	35,6	16,5	20/30/40/50

Wing grips antibacterial

metal parts stainless steel



Material:

Thermoplastic, slate grey.

Bush or threaded pin stainless steel 1.4305.

Version:

Bush and screw bright.

Sample order:

K0274.120106144X20

Application:

The antibacterial KIPP MEDI grip products are highly effective against a variety of hazardous microorganisms, such as bacteria, fungi, viruses and even multi-resistant bacteria (e.g. MRSA).

The plastic used incorporates micro-silver particles with an antimicrobial effect to ensure effective results throughout the entire product life cycle.

Function:

Silver ions are effective in preventing harmful microorganisms from forming on the product surface, promoting a constant reduction of the existing germs on the MEDI grip products (as tested and confirmed by an accredited testing laboratory).

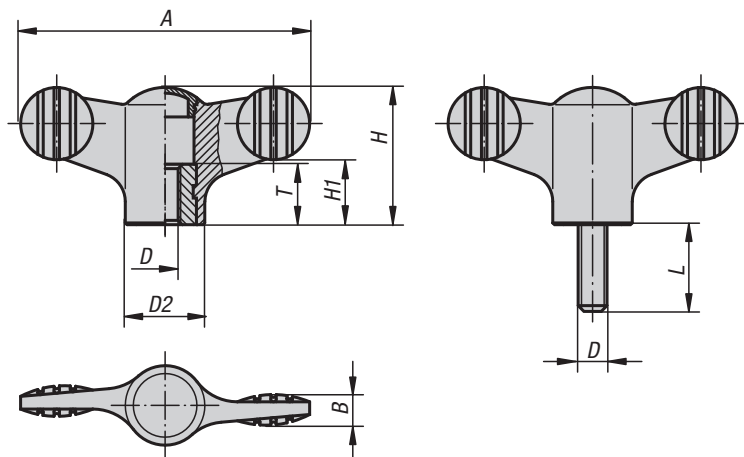
During cleaning cycles the risk of infection while touching these products is significantly lower.

Advantages:

Resistant to humidity and cleaning products (during disinfection) with no toxic side effects.

Applications:

For installation on machines, equipment, plants and furnishings in areas with increased hygienic requirements (including hospitals, doctors' surgeries, rehabilitation centres and food production facilities), as well as for use in public areas or regularly frequented institutions (i.e. nursing homes or daycare centres).



KIPP Wing grips antibacterial internal thread, metal parts stainless steel

Order No.	Version	Size	D	A	B	D2	H	H1	T
K0274.120106144	bush stainless steel	1	M6	50	5	14	24	11,5	10

KIPP Wing grips antibacterial external thread, metal parts stainless steel

Order No.	Version	Size	D	A	B	D2	H	H1	L
K0274.120106144X20	screw stainless steel	1	M6	50	5	14	24	11,5	20

Wing grips antistatic



Material:

Thermoplastic, graphite black.
Bush or screw steel 5.8.

Version:

Bush or screw blue chromed.

Sample order:

K0274.1110624X20

Application:

Sensitive electrical or electronic equipment, components and devices (ESD sensitive elements) may be damaged or destroyed by electrostatic discharges (ESD) in the immediate vicinity.

Electrostatic discharges can come from people or through handling ESD sensitive components (e.g. during production, assembly, transport, storage etc).

Electrically conductive products which conform to DIN EN 61340-5-1 are essential within electronic environments to prevent an electrostatic discharge.

These products can be used for ESD applications or in ESD protection areas (EPA) in accordance with DIN EN 61340-5-1. The yellow ESD logo is printed on the side of the product to clearly identify it.

Safety:

These ESD products can also be used for devices, components and protection systems in areas with high risk of explosion.

Use of these ESD products prevents the occurrence of electrostatic spark discharges, eliminating the potential ignition of gases and dusts which could lead to explosions in enclosed spaces.

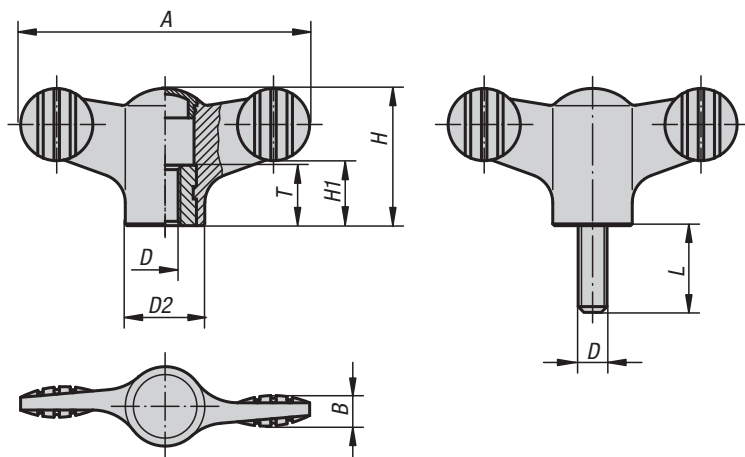
Manufacturers and operators must use and conform to ATEX directives for the protection of persons working in areas with high risk of explosion.

These ESD products are certified by TÜV-Süd in relation to their electrical discharge capability.

Target groups:

Device manufacturers required to conform to ATEX product directive 2014/34/EU.

Operators required to conform to ATEX worker protection directive 1999/92/EC.



KIPP Wing grips antistatic with internal thread

Order No.	Colour	Version	Size	A	B	D	D2	H	H1	T
K0274.1110624	graphite black	bush steel	1	50	5	M6	14	24	11,5	10

KIPP Wing grips antistatic with external thread

Order No.	Colour	Version	Size	A	B	D	D2	H	H1	L
K0274.1110624X20	graphite black	screw steel	1	50	5	M6	14	24	11,5	20

Wing grips

tapped through



For many the modern Novo-Grip wing grips represent the perfect constructive and technical solution for absolutely "natural" gripping. It enables more comfortable handling than ever before.

Material:

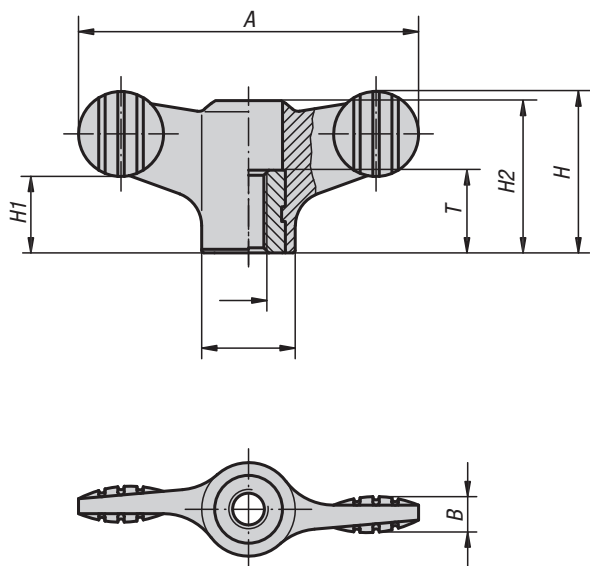
Grip black.
Bush steel 5.8 or stainless steel 1.4305.

Version:

Grip black grey.
Bush blue chromed steel
or bright stainless steel.

Sample order:

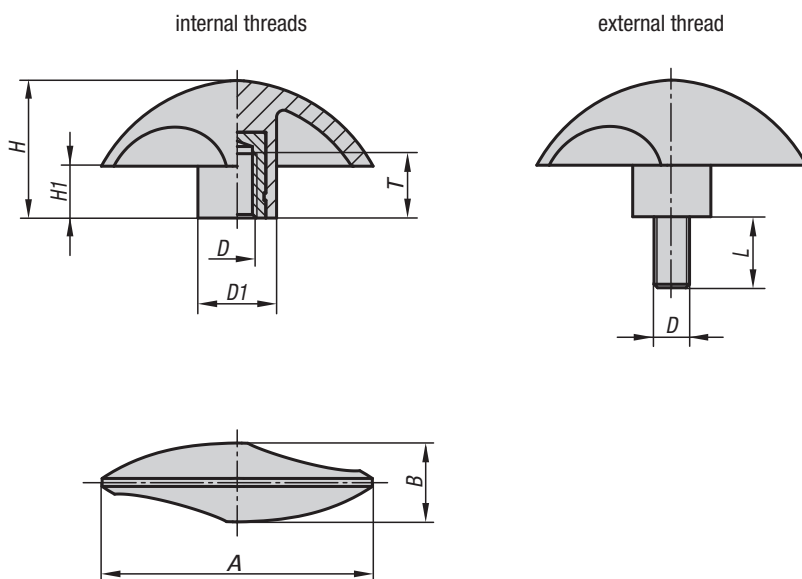
K0274.1904



KIPP Wing grips with tapped through bush

Order No.	Version	D	D2	A	B	H	H1	H2	T
K0274.1904	bush steel	M4	12	38	4,5	18	8,5	16,1	10
K0274.1905	bush steel	M5	12	38	4,5	18	8,5	16,1	10
K0274.1906	bush steel	M6	12	38	4,5	18	8,5	16,1	10
K0274.1105	bush steel	M5	14	50	5	24	11,5	22	10
K0274.1106	bush steel	M6	14	50	5	24	11,5	22	10
K0274.1208	bush steel	M8	21	75	7	35,6	17	33,3	14
K0274.1210	bush steel	M10	21	75	7	35,6	17	33,3	14
K0274.10904	bush stainless steel	M4	12	38	4,5	18	8,5	16,1	10
K0274.10905	bush stainless steel	M5	12	38	4,5	18	8,5	16,1	10
K0274.10906	bush stainless steel	M6	12	38	4,5	18	8,5	16,1	10
K0274.10105	bush stainless steel	M5	14	50	5	24	11,5	22	10
K0274.10106	bush stainless steel	M6	14	50	5	24	11,5	22	10
K0274.10208	bush stainless steel	M8	21	75	7	35,6	17	33,3	14
K0274.10210	bush stainless steel	M10	21	75	7	35,6	17	33,3	14

Wing grips

**Material:**

Grip polyamide, glass bead reinforced.
 Bush brass or steel.
 Screw steel.

Version:

Steel galvanized.

Sample order:

K0783.15006

Note:

Temperature resistance from -50 °C to 130 °C.
 Resistant to common chemicals and oils.

KIPP Wing grips with internal thread

Order No.	Version	D	D1	A	B	H	H1	T
K0783.15006	bush brass	M6	15	51	15	25,5	9,5	9
K0783.16008	bush galvanized steel	M8	18	61,5	18	31	11,5	14
K0783.17510	bush galvanized steel	M10	22	76	22	38,5	14,5	14

KIPP Wing grips with external thread

Order No.	Version	D	D1	A	B	H	H1	L
K0783.25006X15	screw galvanized steel	M6	15	51	15	25,5	9,5	15
K0783.26008X20	screw galvanized steel	M8	18	61,5	18	31	11,5	20
K0783.27510X20	screw galvanized steel	M10	22	76	22	38,5	14,5	20

Wing grips one-sided

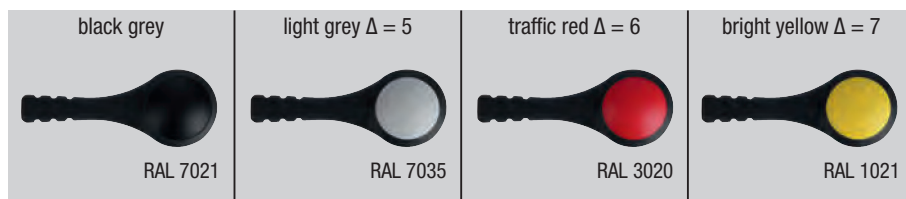
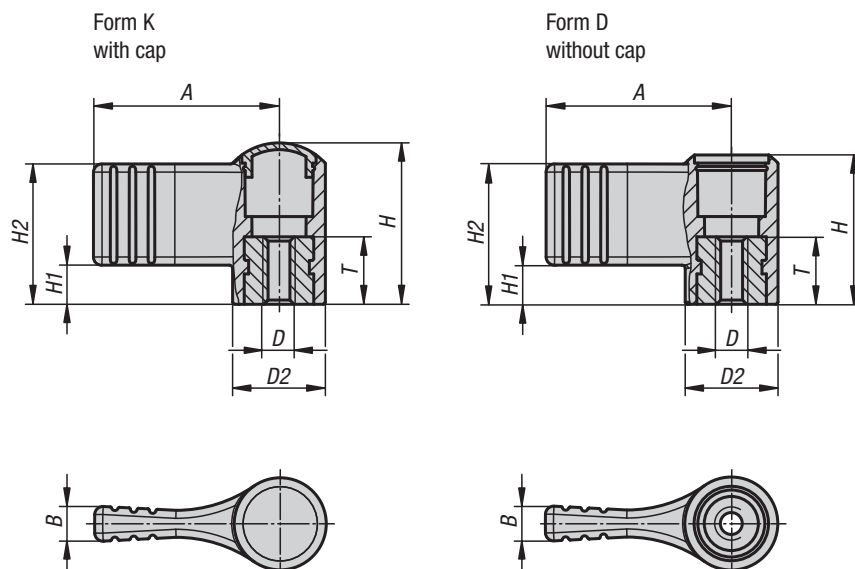


Material:
Thermoplastic.
Bush steel 5.8 or stainless steel 1.4305.

Version:
Black grey.
Bush blue chromed or bright stainless steel.

Sample order:
K0608.09046 (Bush M4 stainless steel, cap traffic red.)

Note:
Δ Add the desired cap colour here. No colour code is required for black grey caps.



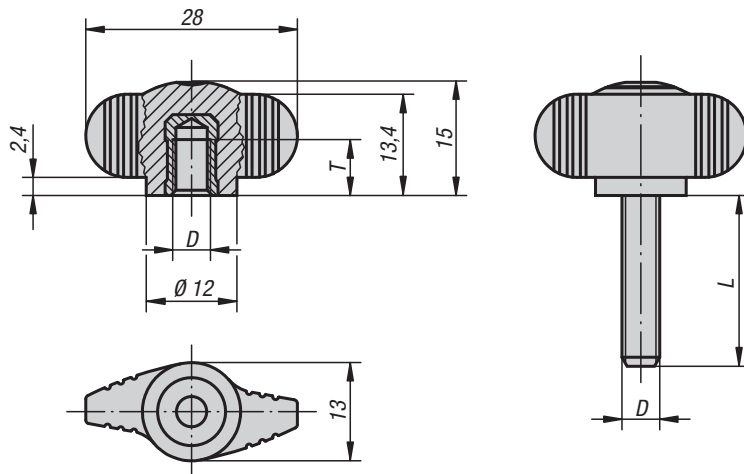
KIPP Wing grips, one-sided with cap

Order No. bush steel	Order No. bush stainless steel	Form	Size	D	D2	A	B	H	H1	H2	T
K0608.904Δ	K0608.0904Δ	K	9	M4	12	22	4,4	18	4,5	15,5	10
K0608.905Δ	K0608.0905Δ	K	9	M5	12	22	4,4	18	4,5	15,5	10
K0608.906Δ	K0608.0906Δ	K	9	M6	12	22	4,4	18	4,5	15,5	10
K0608.105Δ	K0608.0105Δ	K	1	M5	14	27,5	5,1	24	5,8	20,8	10
K0608.106Δ	K0608.0106Δ	K	1	M6	14	27,5	5,1	24	5,8	20,8	10
K0608.208Δ	K0608.0208Δ	K	2	M8	21	37,5	6,3	36	8,5	30,5	14
K0608.210Δ	K0608.0210Δ	K	2	M10	21	37,5	6,3	36	8,5	30,5	14

KIPP Wing grips, one-sided without cap

Order No. bush steel	Order No. bush stainless steel	Form	Size	D	D2	A	B	H	H1	H2	T
K0608.1904	K0608.10904	D	9	M4	12	22	4,4	16,1	4,5	15,5	10
K0608.1905	K0608.10905	D	9	M5	12	22	4,4	16,1	4,5	15,5	10
K0608.1906	K0608.10906	D	9	M6	12	22	4,4	16,1	4,5	15,5	10
K0608.1105	K0608.10105	D	1	M5	14	27,5	5,1	22,1	5,8	20,8	10
K0608.1106	K0608.10106	D	1	M6	14	27,5	5,1	22,1	5,8	20,8	10
K0608.1208	K0608.10208	D	2	M8	21	37,5	6,3	33,3	8,5	30,5	14
K0608.1210	K0608.10210	D	2	M10	21	37,5	6,3	33,3	8,5	30,5	14

Wing grips "Miniwing"



Technical freedom played an important role during the development of these small sized wing grips. The result is a miniwing that is far more than a means to an end. It is a rational and comfortable to use operating and working element.

Material:

Grip black grey thermoplastic.
 Bush brass or stainless steel 1.4305.
 Screw steel 5.8 or stainless steel 1.4305.

Version:

Steel blue chromed.
 Stainless steel bright.

Sample order:

K0274.005X10 (include length L)

KIPP Wing grips "Miniwing" with internal thread

Order No.	Version	D	T
K0274.004	bush brass	M4	6
K0274.005	bush brass	M5	7,5
K0274.006	bush brass	M6	9
K0274.0004	bush stainless steel	M4	6
K0274.0005	bush stainless steel	M5	7,5
K0274.0006	bush stainless steel	M6	9

KIPP Wing grips "Miniwing" with external thread

Order No.	Version	D	L
K0274.004X	screw steel	M4	8
K0274.005X	screw steel	M5	10/15/20
K0274.006X	screw steel	M6	10/15/20/25/30
K0274.008X	screw steel	M8	20/25/30/40
K0274.0004X	screw stainless steel	M4	8
K0274.0005X	screw stainless steel	M5	10/15/20
K0274.0006X	screw stainless steel	M6	10/15/20/25/30
K0274.0008X	screw stainless steel	M8	20/25/30/40

Wing grips "Miniwing" antibacterial

metal parts stainless steel



Material:

Thermoplastic, slate grey.
Bush or threaded pin stainless steel 1.4305.

Version:

Bush and screw bright.

Sample order:

K0274.120006144

Application:

The antibacterial KIPP MEDI grip products are highly effective against a variety of hazardous microorganisms, such as bacteria, fungi, viruses and even multi-resistant bacteria (e.g. MRSA). The plastic used incorporates micro-silver particles with an antimicrobial effect to ensure effective results throughout the entire product life cycle.

Function:

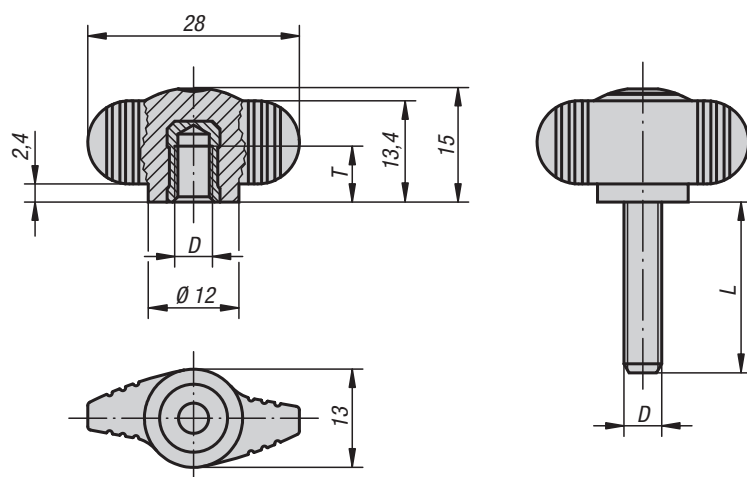
Silver ions are effective in preventing harmful microorganisms from forming on the product surface, promoting a constant reduction of the existing germs on the MEDI grip products (as tested and confirmed by an accredited testing laboratory). During cleaning cycles the risk of infection while touching these products is significantly lower.

Advantages:

Resistant to humidity and cleaning products (during disinfection) with no toxic side effects.

Applications:

For installation on machines, equipment, plants and furnishings in areas with increased hygienic requirements (including hospitals, doctors' surgeries, rehabilitation centres and food production facilities), as well as for use in public areas or regularly frequented institutions (i.e. nursing homes or daycare centres).



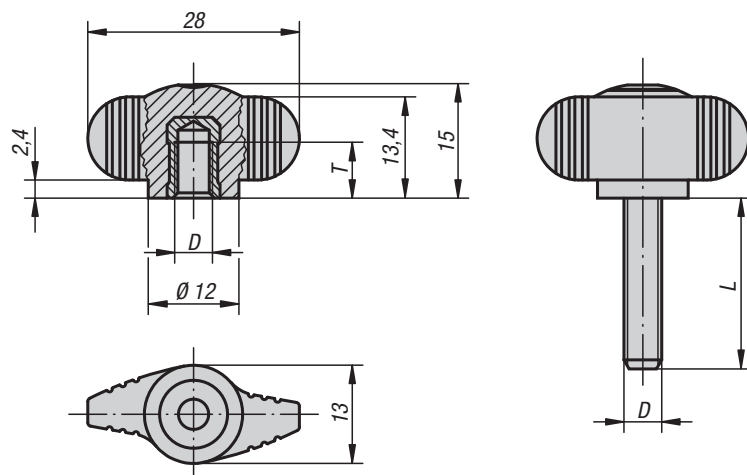
KIPP Wing grips "Miniwing" antibacterial internal thread, metal parts stainless steel

Order No.	Version	D	T
K0274.120006144	bush stainless steel	M6	9

KIPP Wing grips "Miniwing" antibacterial external thread, metal parts stainless steel

Order No.	Version	D	L
K0274.120006144X15	screw stainless steel	M6	15

Wing grips "Miniwing" antistatic



Material:

Thermoplastic, graphite black.
Bush brass or threaded pin steel 5.8.

Version:

Bush or screw blue chromed.

Sample order:

K0274.1100624X15

Application:

Sensitive electrical or electronic equipment, components and devices (ESD sensitive elements) may be damaged or destroyed by electrostatic discharges (ESD) in the immediate vicinity. Electrostatic discharges can come from people or through handling ESD sensitive components (e.g. during production, assembly, transport, storage etc).

Electrically conductive products which conform to DIN EN 61340-5-1 are essential within electronic environments to prevent an electrostatic discharge.

These products can be used for ESD applications or in ESD protection areas (EPA) in accordance with DIN EN 61340-5-1.

The yellow ESD logo is printed on the side of the product to clearly identify it.

Safety:

These ESD products can also be used for devices, components and protection systems in areas with high risk of explosion.

Use of these ESD products prevents the occurrence of electrostatic spark discharges, eliminating the potential ignition of gases and dusts which could lead to explosions in enclosed spaces.

Manufacturers and operators must use and conform to ATEX directives for the protection of persons working in areas with high risk of explosion.

These ESD products are certified by TÜV-Süd in relation to their electrical discharge capability.

Target groups:

Device manufacturers required to conform to ATEX product directive 2014/34/EU.

Operators required to conform to ATEX worker protection directive 1999/92/EC.

KIPP Wing grips "Miniwing" antistatic with internal thread

Order No.	Colour	Version	D	Size	T
K0274.1100624	graphite black	bush brass	M6	0	9

KIPP Wing grips "Miniwing" antistatic with external thread

Order No.	Colour	Version	D	Size	L
K0274.1100624X15	graphite black	screw steel	M6	0	15

Wing grips “Miniwing”

tapped through

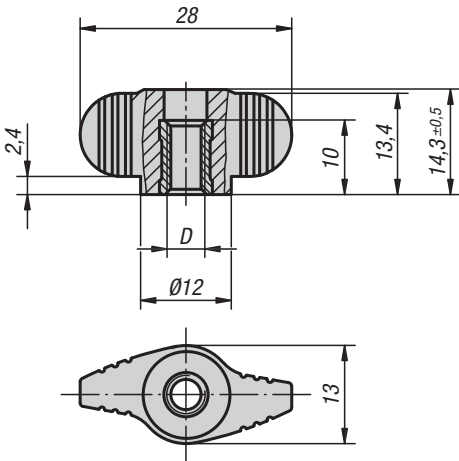


Technical freedom played an important role during the development of these small sized wing grips. The result is a miniwing that is far more than a means to an end. It is a rational and comfortable to use operating and working element.

Material:
Grip thermoplastic.
Bush steel 5.8 or stainless steel 1.4305.

Version:
Grip black grey.
Steel blue chromed
Stainless steel bright.

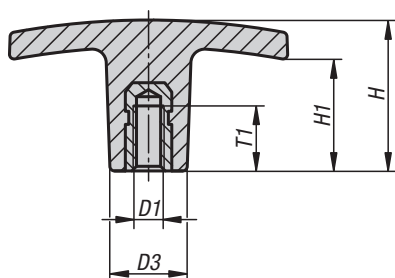
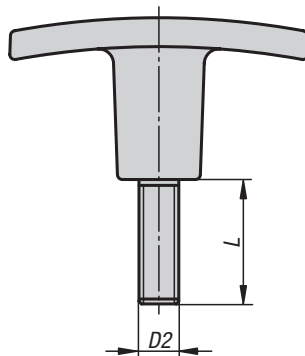
Sample order:
K0658.1004



KIPP Wing grips “Miniwing” with tapped through bush

Order No.	Version	D
K0658.1004	bush steel	M4
K0658.1005	bush steel	M5
K0658.1006	bush steel	M6
K0658.10004	bush stainless steel	M4
K0658.10005	bush stainless steel	M5
K0658.10006	bush stainless steel	M6

T-grips

T-grip
with internal threadT-grip
with external thread**Material:**

Fibreglass reinforced thermoplastic.
Tapped bush brass.
Screw steel.

Version:

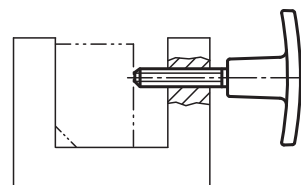
Grip, black.
Screw galvanized.

Sample order:

K0180.25005X15 (include length L)

On request:

Grip colour red, yellow, green, blue, white or grey (min. quantity 500).

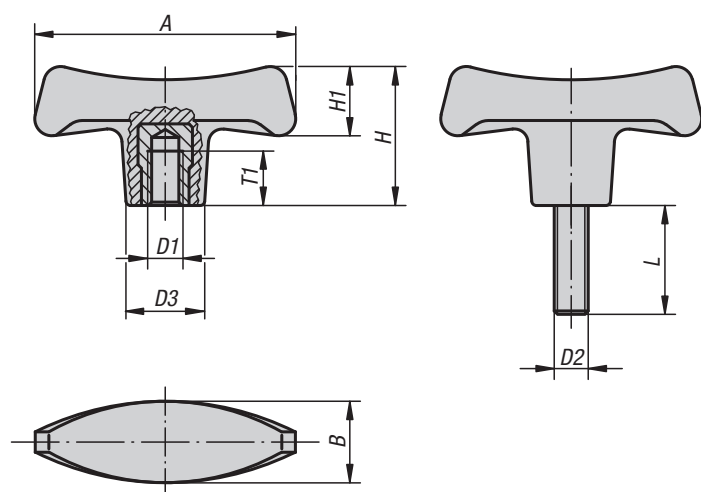
**KIPP T-grips, with internal thread**

Order No.	A	B	D1	D3	H	H1	T1
K0180.14005	40	13	M5	13	30,5	20	10
K0180.15005	50	15	M5	14	24	16	10
K0180.16006	60	17	M6	16	31,5	23	12
K0180.17108	71	19,5	M8	20	36	19	20
K0180.17110	71	19,5	M10	20	36	19	20
K0180.18010	80	26	M10	26	39,5	26	25
K0180.18012	80	26	M12	26	39,5	26	25

KIPP T-grips, with external thread

Order No.	A	B	D2	D3	H	H1	L
K0180.24005X	40	13	M5	13	30,5	20	15
K0180.25005X	50	15	M5	14	24	16	15/20
K0180.26006X	60	17	M6	16	31,5	23	20/25
K0180.27108X	71	19,5	M8	20	36	19	20/30
K0180.27110X	71	19,5	M10	20	36	19	20/30
K0180.28010X	80	26	M10	26	39,5	26	30
K0180.28012X	80	26	M12	26	39,5	26	40

T-grips

T-grip
with internal threadT-grip
with external thread**Material:**

Duroplast PF 31, black.
Bush and stud galvanized steel.

Version:

High-gloss polished.

Sample order:

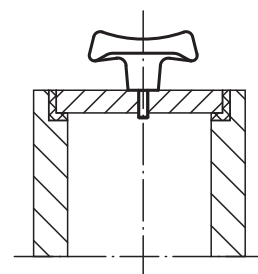
K0181.27006X18 (include length L)

Note:

The versions K0181.17008 and K0181.18008 have a copper plated steel bush.

On request:

Other screw sizes, screw lengths and colours.

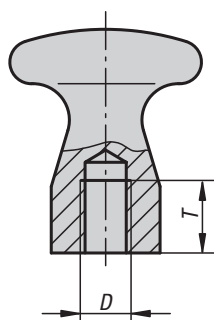
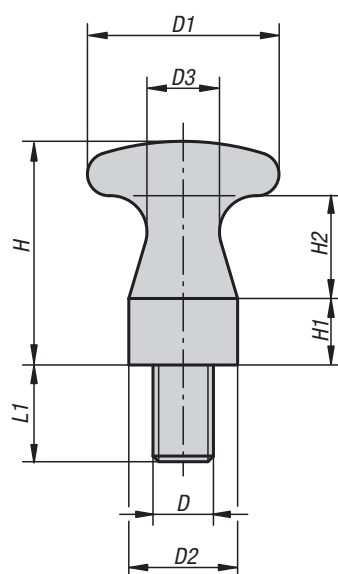
**KIPP T-grips, with internal thread**

Order No.	A	B	D1	D3	H	H1	T1
K0181.17006	70	22	M6	19,6	38,8	20,2	12
K0181.17008	70	22	M8	19,6	38,8	20,2	14
K0181.17010	70	22	M10	19,6	38,8	20,2	14
K0181.18008	80	25	M8	22,3	44	23	14
K0181.18010	80	25	M10	22,3	44	23	22
K0181.19010	90	28	M10	25	49,6	26	22
K0181.19012	90	28	M12	25	49,6	26	21

KIPP T-grips, with external thread

Order No.	A	B	D2	D3	H	H1	L
K0181.27006X	70	22	M6	19,6	38,8	20,2	18
K0181.27008X	70	22	M8	19,6	38,8	20,2	24
K0181.28010X	80	25	M10	22,3	44	23	20/30
K0181.29010X	90	28	M10	25	49,6	26	30
K0181.29012X	90	28	M12	25	49,6	26	24

Knobs flat

Flat knob
with internal threadFlat knob
with external thread**Material:**
Steel.**Version:**
Black oxidised.**Sample order:**
K0157.08

KIPP Knobs flat, internal thread

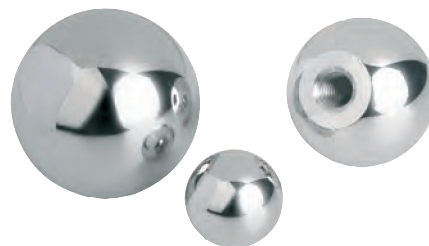
Order No.	D	D1	D2	D3	H	H1	H2	T
K0157.05	M5	16	10	6	18	5	9	7
K0157.06	M6	25	14	10	29	9	13	9
K0157.08	M8	32	18	12	37	11	17	12
K0157.10	M10	36	20	13	42	12	20	15

KIPP Knobs flat, external thread

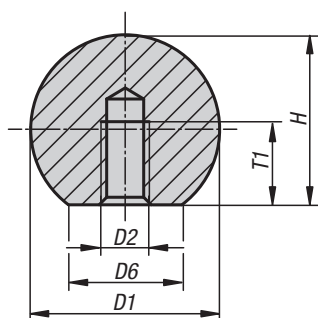
Order No.	D	D1	D2	D3	H	H1	H2	L1
K0157.06010	M6	16	10	6	18	5	9	10
K0157.08014	M8	25	14	10	29	9	13	14
K0157.10016	M10	32	18	12	37	11	17	16
K0157.12018	M12	36	20	13	42	12	20	18

Ball knobs

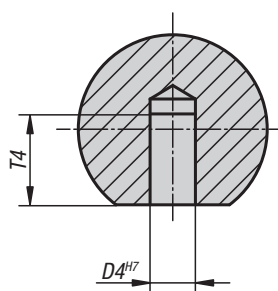
stainless steel or aluminium, DIN 319



Form C
tapped hole



Form K
reamed hole



Material:

Stainless steel 1.4305 or aluminium.

Version:

Polished.

Sample order:

K0650.116043

KIPP Ball knobs stainless steel DIN 319

Order No. Form C	Order No. Form K	D1	D2	D4	~D6	~H	T1 min.	T4 min.
K0650.116043	K0650.316043	16	M4/-	-/6	8	15	7,2/-	-/10
K0650.120053	K0650.320053	20	M5/-	-/8	12	18	9,1/-	-/12
K0650.125063	K0650.325063	25	M6/-	-/10	15	22,5	11/-	-/16
K0650.132083	K0650.332083	32	M8/-	-/12	18	29	14,5/-	-/20
K0650.140103	K0650.340103	40	M10/-	-/16	22	37	18/-	-/25
K0650.150123	K0650.350123	50	M12/-	-/20	28	46	21/-	-/32

KIPP Ball knobs aluminium DIN 319

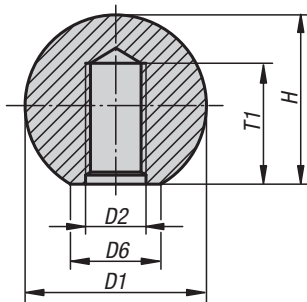
Order No. Form C	Order No. Form K	D1	D2	D4	~D6	~H	T1 min.	T4 min.
K0650.116042	K0650.316042	16	M4/-	-/6	8	15	7,2/-	-/10
K0650.120052	K0650.320052	20	M5/-	-/8	12	18	9,1/-	-/12
K0650.125062	K0650.325062	25	M6/-	-/10	15	22,5	11/-	-/16
K0650.132082	K0650.332082	32	M8/-	-/12	18	29	14,5/-	-/20
K0650.140102	K0650.340102	40	M10/-	-/16	22	37	18/-	-/25
K0650.150122	K0650.350122	50	M12/-	-/20	28	46	21/-	-/32

Ball knobs

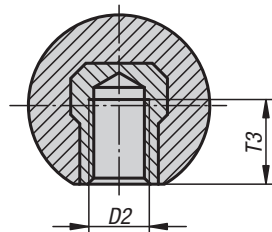
thermoplastic, DIN 319 enhanced



Form C
plastic thread



Form E
tapped bush



Material:
Black thermoplastic.
Bush steel.

Version:
Steel galvanized.

Sample order:
K0158.11604

On request:
Other colours.

KIPP Ball knobs thermoplastic DIN 319 enhanced

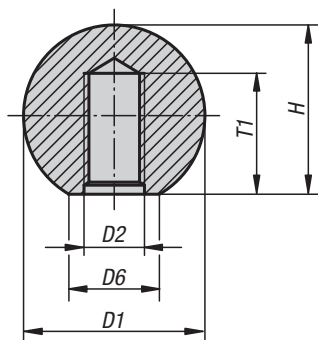
Order No.	Form	D1	D2	~D6	~H	T1 min.	T3 min.
K0158.11604	C	16	M4	8	15	6	-
K0158.11605	C	16	M5	8	15	7,5	-
K0158.12005	C	20	M5	12	18	7,5	-
K0158.12006	C	20	M6	12	18	9	-
K0158.12506	C	25	M6	15	22,5	9	-
K0158.12508	C	25	M8	15	22,5	12	-
K0158.13208	C	32	M8	18	29	12	-
K0158.13210	C	32	M10	18	29	15	-
K0158.22005	E	20	M5	12	18	-	7,5
K0158.22006	E	20	M6	12	18	-	7,5
K0158.22506	E	25	M6	15	22,5	-	9
K0158.22508	E	25	M8	15	22,5	-	9
K0158.23208	E	32	M8	18	29	-	12
K0158.23210	E	32	M10	18	29	-	12

Ball knobs smooth

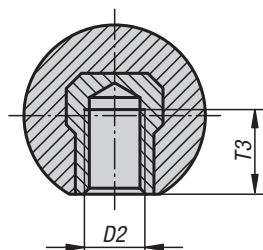
DIN 319 enhanced



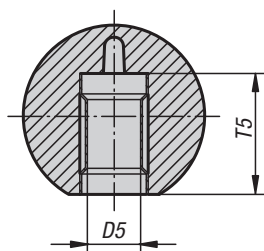
Form C
moulded thread



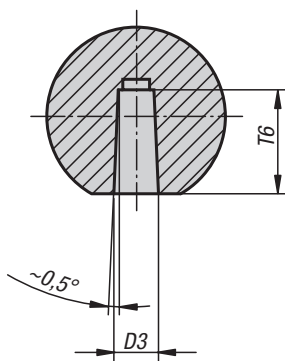
Form E
tapped bush



Form L
press-fit sleeve



Form M
tapered hole



Material:

Black Duroplast PF 31.
Bush galvanized steel.

Version:

High-gloss polished.

Sample order:

K0159.11604

Note:

Assembly, Form L: The ball knobs are installed by tapping lightly with a hammer. Please only use a rubber or plastic hammer with a weight up to 200 g!

The version K0159.21604 has a brass bush.
The versions K0159.23008, K0159.23508 and K0159.24008 have copper plated steel bushes.

On request:

* These versions are available from stock in dark red at extra charge.

Shank tolerance:

Ball knobs with press-fit sleeve can be mounted on standard shafts with tolerance h9. The supplied press-fit sleeve assures a firm and reliable fit.

KIPP Ball knobs smooth, DIN 319 enhanced, Form C

Order No.	Form	D1	D2	~D6	~H	T1 min.
K0159.11604	C	16	M4	8	15	6
K0159.11605	C	16	M5	8	15	7,5
K0159.11606	C	16	M6	8	15	9
K0159.12005*	C	20	M5	12	18	7,5
K0159.12006	C	20	M6	12	18	9
K0159.12506*	C	25	M6	15	23	9
K0159.12508	C	25	M8	15	23	12
K0159.13008*	C	30	M8	16	28	12
K0159.13208*	C	32	M8	18	29	12
K0159.13210	C	32	M10	18	29	15
K0159.13508	C	36	M8	17	33	18
K0159.13510*	C	36	M10	17	33	15
K0159.14008	C	40	M8	20	37,5	12
K0159.14010*	C	40	M10	20	37,5	15
K0159.14012	C	40	M12	20	37,5	18
K0159.14510	C	45	M10	20	43	15
K0159.14512	C	45	M12	20	43	18
K0159.15010	C	50	M10	22	48	15
K0159.15012*	C	50	M12	22	48	18

Ball knobs smooth

DIN 319 enhanced

KIPP Ball knobs smooth, DIN 319 enhanced, Form E

Order No.	Form	D1	D2	~D6	~H	T3 min.
K0159.21604	E	16	M4	8	15	6
K0159.22005*	E	20	M5	12	18	7,5
K0159.22006	E	20	M6	12	18	9
K0159.22506*	E	25	M6	15	23	9
K0159.22508	E	25	M8	15	23	12
K0159.23008*	E	30	M8	16	28	12
K0159.23208	E	32	M8	18	29	12
K0159.23210	E	32	M10	18	29	15
K0159.23508	E	36	M8	17	33	14
K0159.23510	E	36	M10	17	33	14
K0159.24008	E	40	M8	20	37,5	14
K0159.24010*	E	40	M10	20	37,5	15
K0159.24012	E	40	M12	20	37,5	18
K0159.24510	E	45	M10	20	43	22
K0159.24512	E	45	M12	20	43	21
K0159.25010	E	50	M10	22	48	15
K0159.25012*	E	50	M12	22	48	18

KIPP Ball knobs smooth, DIN 319 enhanced, Form L

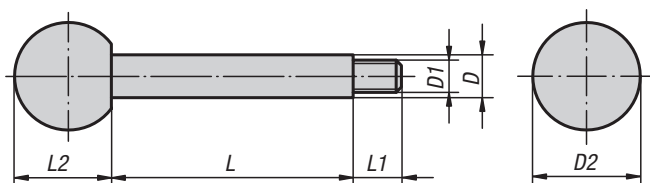
Order No.	Form	D1	D5	~D6	~H	T5
K0159.42005	L	20	5	12	18	13
K0159.42506	L	25	6	15	23	16
K0159.42508	L	25	8	15	23	15
K0159.43208	L	32	8	18	29	15
K0159.43210	L	32	10	18	29	20
K0159.44010	L	40	10	20	37,5	20
K0159.44012	L	40	12	20	37,5	23
K0159.45012	L	50	12	22	48	20

KIPP Ball knobs smooth, DIN 319 enhanced, Form M

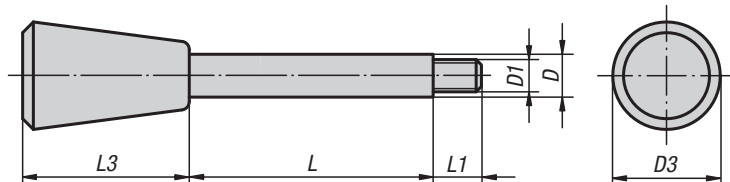
Order No.	Form	D1	D3	~D6	~H	T6
K0159.31604	M	16	4	8	15	9
K0159.32005	M	20	5	12	18	12
K0159.32506	M	25	6	15	23	15
K0159.32508	M	25	8	15	23	15
K0159.33208	M	32	8	18	29	15
K0159.33210	M	32	10	18	29	15
K0159.34010	M	40	10	20	37,5	20
K0159.34012	M	40	12	20	37,5	20
K0159.35012	M	50	12	22	48	22

Handles

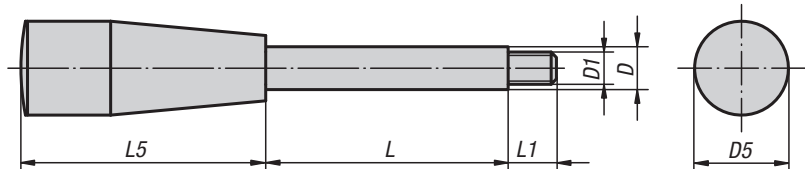
Form A



Form C



Form E

**Material:**

Knobs Duroplast PF 31.

Rod steel 1.0718 or stainless steel 1.4305.

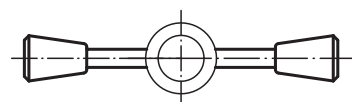
Version:

Duroplast black, high-gloss polished.

Steel black oxidised or bright stainless steel.

Sample order:

K0179.208X35 (include length L)



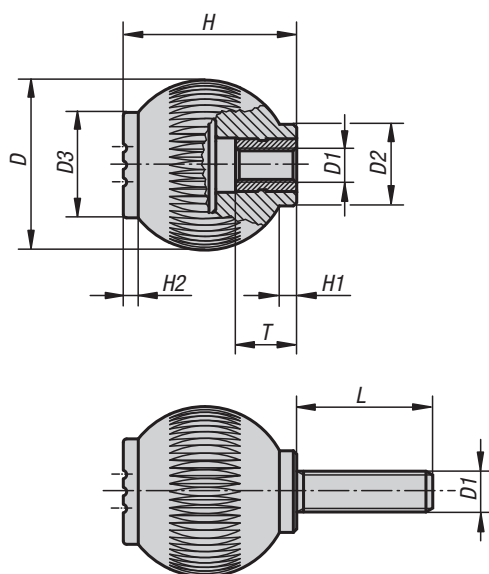
KIPP Steel rods

Order No.	Form	D	D1	D2	D3	D5	L	L1	L2	L3	L5
K0179.208X	A	8	M6	20	-	-	35/50/65	9	18	-	-
K0179.210X	A	10	M8	25	-	-	50/65/80/100	13	22,5	-	-
K0179.212X	A	12	M10	32	-	-	65/80/100/125	15	29	-	-
K0179.214X	A	14	M12	35	-	-	80/100/125/160	16	32,5	-	-
K0179.408X	C	8	M6	-	20	-	35/50/65	9	-	30	-
K0179.410X	C	10	M8	-	25	-	50/65/80/100	13	-	38	-
K0179.412X	C	12	M10	-	30	-	65/80/100/125	15	-	46	-
K0179.414X	C	14	M12	-	35	-	80/100/125/160	16	-	53	-
K0179.608X	E	8	M6	-	-	17	35/50/65	9	-	-	45
K0179.610X	E	10	M8	-	-	23	50/65/80/100	13	-	-	60
K0179.612X	E	12	M10	-	-	28	65/80/100/125	15	-	-	70
K0179.614X	E	14	M12	-	-	28	80/100/125/160	16	-	-	70

KIPP Stainless steel rods

Order No.	Form	D	D1	D2	D3	D5	L	L1	L2	L3	L5
K0179.1212X	A	12	M10	32	-	-	100/80/65/125	15	29	-	-
K0179.1210X	A	10	M8	25	-	-	80/65/50/100	13	22,5	-	-
K0179.1208X	A	8	M6	20	-	-	50/65/35	9	18	-	-
K0179.1214X	A	14	M12	35	-	-	100/80/160/125	16	32,5	-	-
K0179.1410X	C	10	M8	-	25	-	80/65/50/100	13	-	38	-
K0179.1412X	C	12	M10	-	30	-	100/80/65/125	15	-	46	-
K0179.1408X	C	8	M6	-	20	-	50/65/35	9	-	30	-
K0179.1414X	C	14	M12	-	35	-	100/80/160/125	16	-	53	-
K0179.1608X	E	8	M6	-	-	17	50/65/35	9	-	-	45
K0179.1610X	E	10	M8	-	-	23	80/65/50/100	13	-	-	60
K0179.1612X	E	12	M10	-	-	28	100/80/65/125	15	-	-	70
K0179.1614X	E	14	M12	-	-	28	100/80/160/125	16	-	-	70

Spherical knobs



An ergonomically perfect product for three dimensional gripping:
The spherical surface also has vertical ribbing.
Thanks to CAD designing, the requirements of different fields can be met.

Material:

Thermoplastic, black grey.
 Bush and screw steel 5.8 or stainless steel 1.4305.

Version:

Blue-chromed steel or bright stainless steel.

Sample order:

K0253.1066X15 (cap colour traffic red; include length L.)

Note:

Δ Add the desired cap colour here. No colour code is required for black grey caps.

**KIPP Spherical knobs with internal thread**

Order No. bush steel	Order No. bush stainless steel	Size	D	D1	D2	D3	H	H1	H2	T
K0253.106Δ	K0253.0106Δ	1	25	M6	12	17	25	3	2	10
K0253.208Δ	K0253.0208Δ	2	32	M8	15,5	19	33	3,5	2,6	14
K0253.310Δ	K0253.0310Δ	3	40	M10	19	23	41,5	4	3	14
K0253.410Δ	K0253.0410Δ	4	50	M10	24	31	51	5,5	4,5	14
K0253.412Δ	K0253.0412Δ	4	50	M12	24	31	51	5,5	4,5	18

KIPP Spherical knobs with external thread

Order No. screw steel	Order No. screw stainless steel	Size	D	D1	D2	D3	H	H1	H2	L
K0253.106ΔX	K0253.0106ΔX	1	25	M6	12	17	25	3	2	15/20/25/30
K0253.208ΔX	K0253.0208ΔX	2	32	M8	15,5	19	33	3,5	2,6	20/25/30/40
K0253.310ΔX	K0253.0310ΔX	3	40	M10	19	23	41,5	4	3	20/30/40
K0253.410ΔX	K0253.0410ΔX	4	50	M10	24	31	51	5,5	4,5	20/30/40
K0253.412ΔX	K0253.0412ΔX	4	50	M12	24	31	51	5,5	4,5	20/30/40

Spherical knobs biopolymer

**Material:**

Biopolymer, beech.
Bush or threaded pin steel 5.8

Version:

Bush or threaded pin galvanized and blue chromed.
Natural beech with beech fibres or coloured black grey.

Sample order:

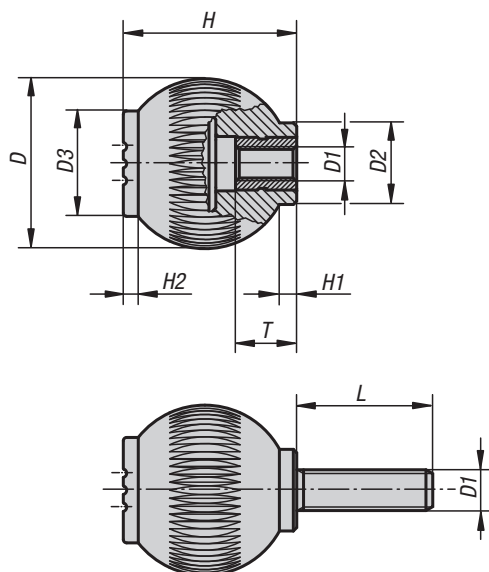
K0253.10106143X15

Advantages:

This biopolymer is manufactured entirely from renewable raw materials (oil free).
Conservation of finite fossil resources.
The wood fibres originate 100% from local forests in Germany.
PEFC certified (guarantees that wood products originate from sustainably managed forests).

Characteristics:

Excellent mechanical stability (certified with a minimum of 2x safety factor).
Biopolymer is suitable for recycling (comparable to thermoplastics).
Suitable for outdoor use (not biodegradable).
Excellent resistance to strong acids and lyes.
Short-term resistance to alcohol, fuel, mineral oil and grease.

**KIPP Spherical knobs biopolymer with internal thread**

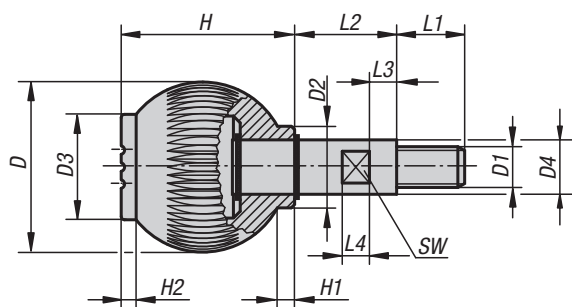
Order No.	Colour	Size	D	D1	D2	D3	H	H1	H2	T
K0253.10106143	natural beech	1	25	M6	12	17	25	3	2	10
K0253.10208143	natural beech	2	32	M8	15,5	19	33	3,5	2,6	14
K0253.1010690	black grey	1	25	M6	12	17	25	3	2	10
K0253.1020890	black grey	2	32	M8	15,5	19	33	3,5	2,6	14

KIPP Spherical knobs biopolymer with external thread

Order No.	Colour	Size	D	D1	D2	D3	H	H1	H2	L
K0253.10106143X15	natural beech	1	25	M6	12	17	25	3	2	15
K0253.10208143X20	natural beech	2	32	M8	15,5	19	33	3,5	2,6	20
K0253.1010690X15	black grey	1	25	M6	12	17	25	3	2	15
K0253.1020890X20	black grey	2	32	M8	15,5	19	33	3,5	2,6	20

Spherical knobs

revolving



An ergonomically perfect product for three-dimensional gripping. The spherical surface also has vertical ribbing. Thanks to CAD designing, the requirements of different fields can be met.

Material:

Thermoplastic, black grey.
Axis steel 5.8 or stainless steel 1.4305.

Version:

Steel blue-chromed or stainless steel bright.
Circlips galvanized, including stainless steel version.

Sample order:

K0254.1066 (cap colour traffic red.)

Note:

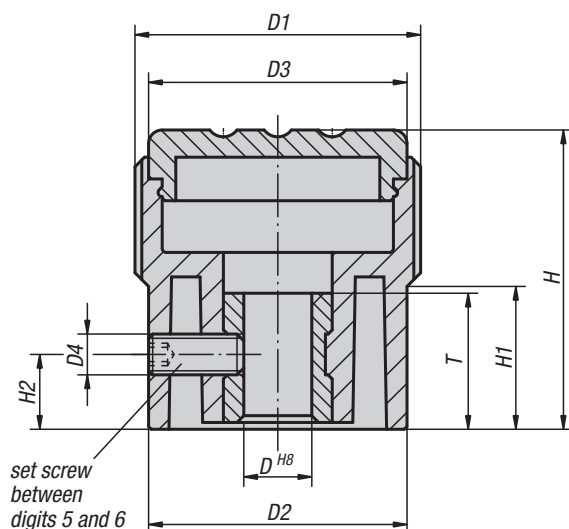
Δ Add the desired cap colour here.
No colour code is required for black grey caps.



KIPP Spherical knobs revolving

Order No. pin steel	Order No. pin stainless steel	Size	D	D1	D2	D3	D4	H	H1	H2	L1	L2	L3	L4	SW
K0254.106Δ	K0254.0106Δ	1	25	M6	12	17	8	25	3	2	10	15	5	5	7
K0254.208Δ	K0254.0208Δ	2	32	M8	15,5	19	10	33	3,5	2,6	12	20	6	6	8
K0254.310Δ	K0254.0310Δ	3	40	M10	19	23	13	41,5	4	3	15	25	7	9	10
K0254.412Δ	K0254.0412Δ	4	50	M12	24	31	16	51	5,5	4,5	20	30	8	8	13

Control knobs



Novo-Grip control knobs provide a precise and reproducible position setting, optimal reading of the perfectly incorporated graduations and are easily fastened permanently to the shaft with the integrated set screw.

Material:

Thermoplastic, black grey.
Bush steel.

Version:

Bush, blue chromed.

Sample order:

K0248.11055 (cap colour light grey)

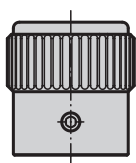
Note:

Available without graduations, with one scale line or with 20 graduations and 10 digits.

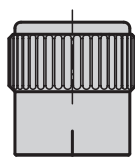
Δ Add the desired cap colour here; no colour code is required for black grey caps.

On request:

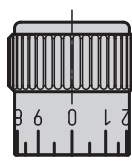
Special graduations.



Form A
without
graduations



Form B
with one scale
line



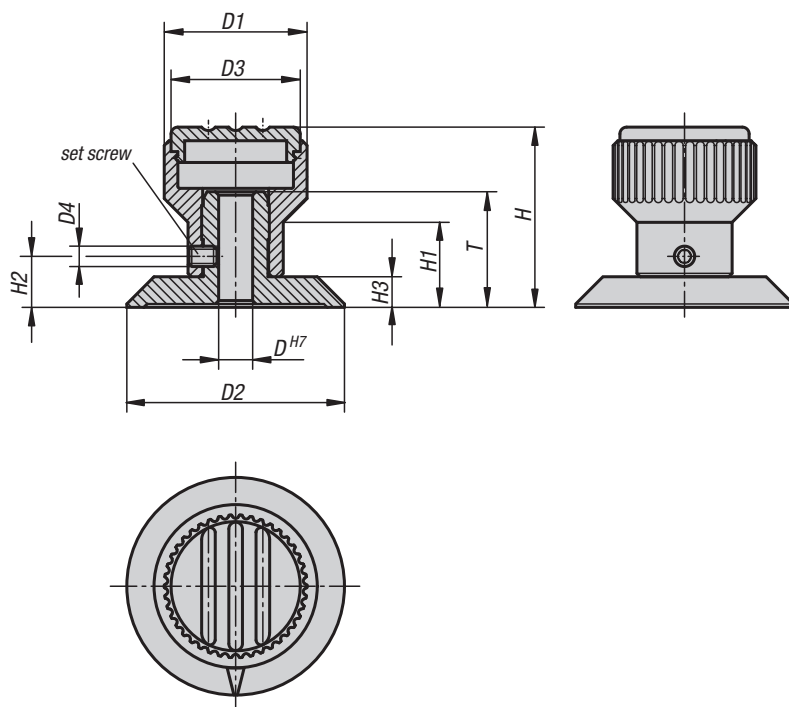
Form C
with standard
graduations



KIPP Control knobs

Order No.	Form	Size	D	D1	D2	D3	D4	H	H1	H2	T
K0248.1105Δ	A	1	5	21	19	19	M3	22	10,5	5	10
K0248.1206Δ	A	2	6	26	23	23	M3	26	12	6	10
K0248.1308Δ	A	3	8	34	31	31	M4	36	17,5	7	14
K0248.2105Δ	B	1	5	21	19	19	M3	22	10,5	5	10
K0248.2206Δ	B	2	6	26	23	23	M3	26	12	6	10
K0248.2308Δ	B	3	8	34	31	31	M4	36	17,5	7	14
K0248.3105Δ	C	1	5	21	19	19	M3	22	10,5	5	10
K0248.3206Δ	C	2	6	26	23	23	M3	26	12	6	10
K0248.3308Δ	C	3	8	34	31	31	M4	36	17,5	7	14

Control knobs



This Novo-Grip control knob allows different switching positions to be quickly and easily set. The engraved silver arrow clearly marks the presently set position.

Material:

Knurled knob thermoplastic.
Washer aluminium.

Version:

Knurled knob black grey.
Washer, black anodized.

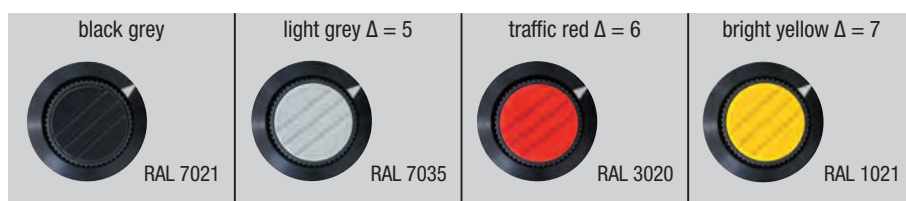
Sample order:

K0249.1055 (cap colour light grey)

Note:

The arrow is engraved after anodizing. The set screw secures both the hub and the pressed-in washer. The H7 hole in the hub ensures a good tight fit on the shaft.

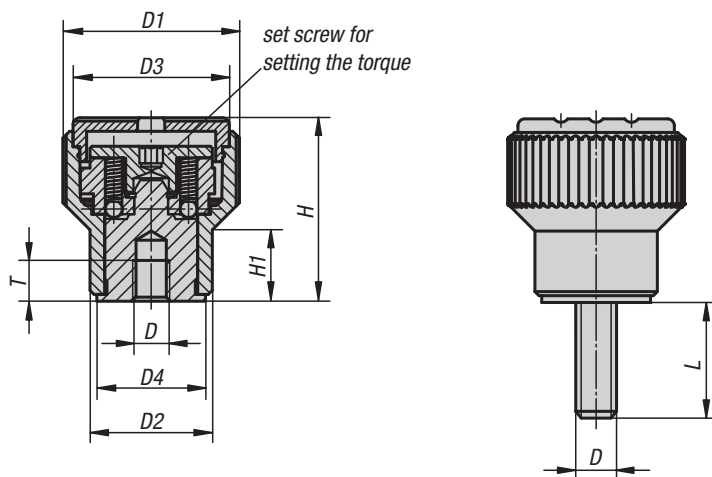
Δ Add the desired cap colour here. No colour code is required for black grey caps.



KIPP Control knobs

Order No.	Size	D	D1	D2	D3	D4	H	H1	H2	H3	T
K0249.105Δ	1	5	21	32	19	M3	26,5	12,5	7,5	4,5	17
K0249.206Δ	2	6	26	40	23	M4	31,5	15	9,5	5,5	20,5
K0249.308Δ	3	8	34	52	31	M4	43	20	12	7	22

Knurled torque knobs


Material:

Thermoplastic, black grey.
Bush and screw steel 5.8.

Version:

Bush black oxidised.
Screw blue chromed.

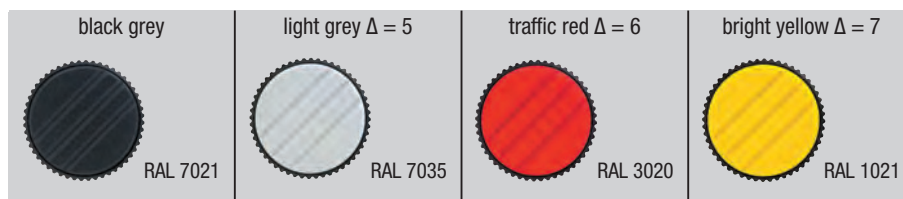
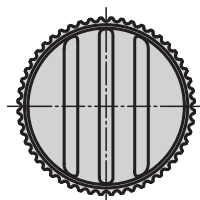
Sample order:

K0277.2056X30
(cap colour traffic red; include length L)

Note:

The set screw sets the required torque. The knob de-clutches and turns freely when the desired torque is reached.

Δ Add the desired cap colour here. No colour code is required for black grey caps.



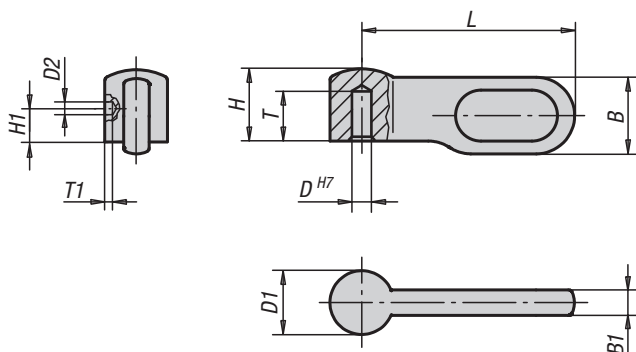
KIPP Knurled torque knobs with internal thread

Order No.	Version	Size	D	D1	D2	D3	D4	H	H1	T	Adjustable torque approx. Nm min. - max.
K0277.205Δ	bush steel	2	M5	26	18	23	16	27	10,5	5	0,1 - 0,3
K0277.206Δ	bush steel	2	M6	26	18	23	16	27	10,5	6	0,1 - 0,3
K0277.306Δ	bush steel	3	M6	34	22	31	20	37,5	14,5	10	0,1 - 0,3
K0277.308Δ	bush steel	3	M8	34	22	31	20	37,5	14,5	14	0,1 - 0,3

KIPP Knurled torque knobs with external thread

Order No.	Version	Size	D	D1	D2	D3	D4	H	H1	Adjustable torque approx. Nm min. - max.	L
K0277.205ΔX	screw steel	2	M5	26	18	23	16	27	10,5	0,1 - 0,3	30/50
K0277.206ΔX	screw steel	2	M6	26	18	23	16	27	10,5	0,1 - 0,3	30/50
K0277.306ΔX	screw steel	3	M6	34	22	31	20	37,5	14,5	0,1 - 0,3	40/60
K0277.308ΔX	screw steel	3	M8	34	22	31	20	37,5	14,5	0,1 - 0,3	40/60

Lock grips

**Material:**

Stainless steel 1.4308 or steel.

Version:

Stainless steel bright.

Steel black oxidised.

Sample order:

K0178.1040

Note:

Lock grips can be used as required. The styled design with recessed grip gives fingers a good purchase and is well suited to modern requirements. High clamping forces can be easily attained. Use the pilot hole in the side to secure the grip by pinning or screw.

KIPP Lock grip

Order No.	Version	Size	B	B1	D	D1	D2	H	H1	L	T	T1
K0178.1040	stainless steel	1	9	3	4	7,5	1,5	8,5	3	25	5,5	0,5
K0178.2050	stainless steel	2	10,8	3,6	5	9	2	10,2	4	30	6,5	1
K0178.3060	stainless steel	3	14,4	4,8	6	12	2	13,6	5	40	8,7	1
K0178.4080	stainless steel	4	18	6	8	15	3	17	6	50	10,2	1
K0178.1041	steel	1	9	3	4	7,5	1,5	8,5	3	25	5,5	0,5
K0178.2051	steel	2	10,8	3,6	5	9	2	10,2	4	30	6,5	1
K0178.3061	steel	3	14,4	4,8	6	12	2	13,6	5	40	8,7	1
K0178.4081	steel	4	18	6	8	15	3	17	6	50	10,2	1

