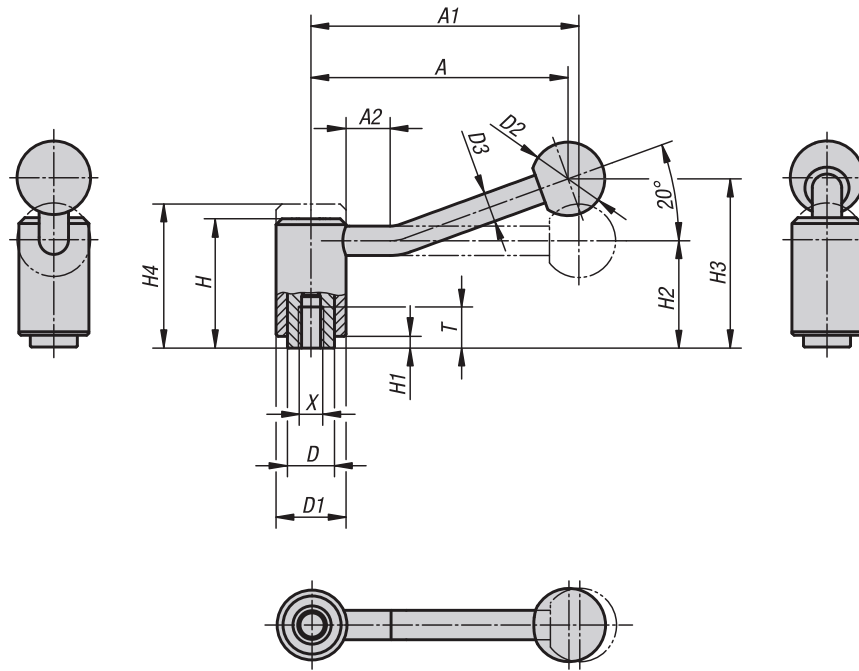


Tension levers

internal thread



Material:

Steel parts grade 5.8.
Ball knob black plastic.

Version:

Plastic-coated with fine texture, black

Sample order:

K0108.1082

On request:

Other internal threads and special versions.
Dimensions "H1", "A" and "A1" available in other lengths at extra charge.



KIPP Tension levers with internal thread

Order No. 0°	Order No. 20°	Size	X	T	D	D1	D2	D3	H	H1	H2	H3	H4	A	A1	A2	No. of teeth
K0108.1082	K0108.1081	1	M8	14	16	24	25	10	44,5	4,5	37	-/58,5	49,5	-/88	92/-	-/15	22
K0108.1102	K0108.1101	1	M10	14	16	24	25	10	44,5	4,5	37	-/58,5	49,5	-/88	92/-	-/15	22
K0108.2102	K0108.2101	2	M10	17	19	28	32	12	51,5	5,5	42	-/68,5	57,5	-/106	111/-	-/15	24
K0108.2122	K0108.2121	2	M12	17	19	28	32	12	51,5	5,5	42	-/68,5	57,5	-/106	111/-	-/15	24
K0108.3122	K0108.3121	3	M12	23	23	33	32	13	58	6	47	-/81	65	-/128,5	134,5/-	-/15	26
K0108.3162	K0108.3161	3	M16	23	23	33	32	13	58	6	47	-/81	65	-/128,5	134,5/-	-/15	26
K0108.4162	K0108.4161	4	M16	27	30	41	32	13	68,5	7,5	56,5	-/89,5	76,5	-/128,5	134/-	-/15	36
K0108.4202	K0108.4201	4	M20	27	30	41	32	13	68,5	7,5	56,5	-/89,5	76,5	-/128,5	134/-	-/15	36

Tension levers

external thread



Material:

Steel parts grade 5.8.
Ball knob black plastic.

Version:

Plastic-coated with fine texture, black

Sample order:

K0108.1082X30 (include length L)

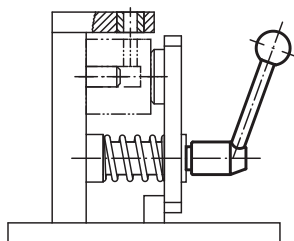
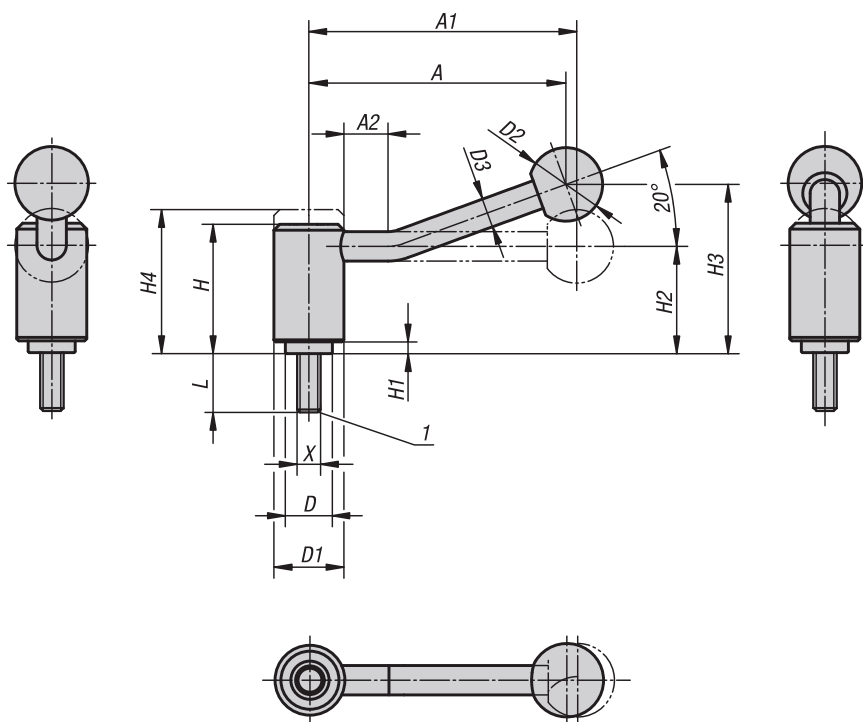
On request:

Other external threads, screw lengths and special versions.

Dimensions "H1", "A" and "A1" available in other lengths at extra charge.

Drawing reference:

1) flat point DIN 78



KIPP Tension levers with external thread

Order No. 0°	Order No. 20°	Size	X	D	D1	D2	D3	H	H1	H2	H3	H4	A	A1	A2	No. of teeth	L
K0108.1082X	K0108.1081X	1	M8	16	24	25	10	44,5	4,5	37	-/58,5	49,5	-/88	92/-	-/15	22	15/20/25/30/40/50/60
K0108.1102X	K0108.1101X	1	M10	16	24	25	10	44,5	4,5	37	-/58,5	49,5	-/88	92/-	-/15	22	15/20/25/30/40/50/60
K0108.1122X	K0108.1121X	1	M12	16	24	25	10	44,5	4,5	37	-/58,5	49,5	-/88	92/-	-/15	22	15/20/25/30/40/50/60
K0108.2122X	K0108.2121X	2	M12	19	28	32	12	51,5	5,5	42	-/68,5	57,5	-/106	111/-	-/15	24	20/25/30/40/50/60
K0108.3122X	K0108.3121X	3	M12	23	33	32	13	58	6	47	-/81	65	-/128,5	134,5/-	-/15	26	20/25/30/40/50/60/70/80/90
K0108.3162X	K0108.3161X	3	M16	23	33	32	13	58	6	47	-/81	65	-/128,5	134,5/-	-/15	26	20/25/30/40/50/60/70/80/90
K0108.4162X	K0108.4161X	4	M16	30	41	32	13	68,5	7,5	56,5	-/89,5	76,5	-/128,5	134/-	-/15	36	30/40/50/60/70/80/90
K0108.4202X	K0108.4201X	4	M20	30	41	32	13	68,5	7,5	56,5	-/89,5	76,5	-/128,5	134/-	-/15	36	30/40/50/60/70/80/90

K0109

Tension levers

internal thread, stainless steel



Material:

Steel parts stainless steel 1.4305.
Ball knob black plastic.

Version:

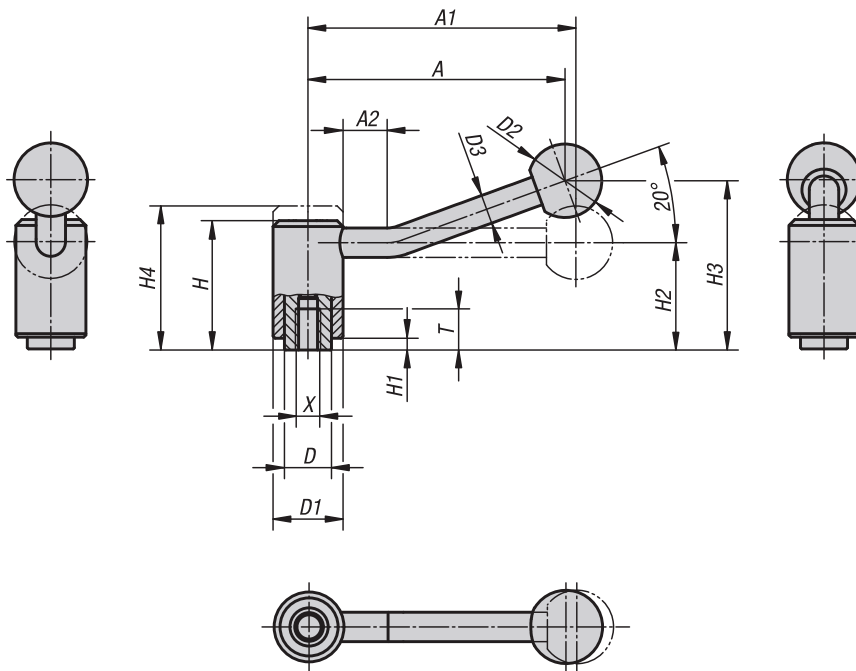
Steel parts bright.
Ball knob polished.

Sample order:

K0109.1082

On request:

Other internal threads and special versions.
Dimensions "H1", "A" and "A1" available in other lengths at extra charge.



KIPP Tension levers, internal thread, stainless steel

Order No. 0°	Order No. 20°	Size	X	T	D	D1	D2	D3	H	H1	H2	H3	H4	A	A1	A2	No. of teeth
K0109.1082	K0109.1081	1	M8	14	16	24	25	10	44,5	4,5	37	-/58,5	49,5	-/88	92/-	-/15	22
K0109.1102	K0109.1101	1	M10	14	16	24	25	10	44,5	4,5	37	-/58,5	49,5	-/88	92/-	-/15	22
K0109.2102	K0109.2101	2	M10	17	19	28	32	12	51,5	5,5	42	-/68,5	57,5	-/106	111/-	-/15	24
K0109.2122	K0109.2121	2	M12	17	19	28	32	12	51,5	5,5	42	-/68,5	57,5	-/106	111/-	-/15	24
K0109.3122	K0109.3121	3	M12	23	23	33	32	13	58	6	47	-/81	65	-/128,5	134,5/-	-/15	26
K0109.3162	K0109.3161	3	M16	23	23	33	32	13	58	6	47	-/81	65	-/128,5	134,5/-	-/15	26
K0109.4162	K0109.4161	4	M16	27	30	41	32	13	68,5	7,5	56,5	-/89,5	76,5	-/128,5	134/-	-/15	36

Tension levers

external thread, stainless steel



Material:

Steel parts stainless steel 1.4305.
Ball knob black plastic.

Version:

Steel parts bright.
Ball knob polished.

Sample order:

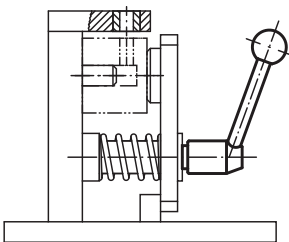
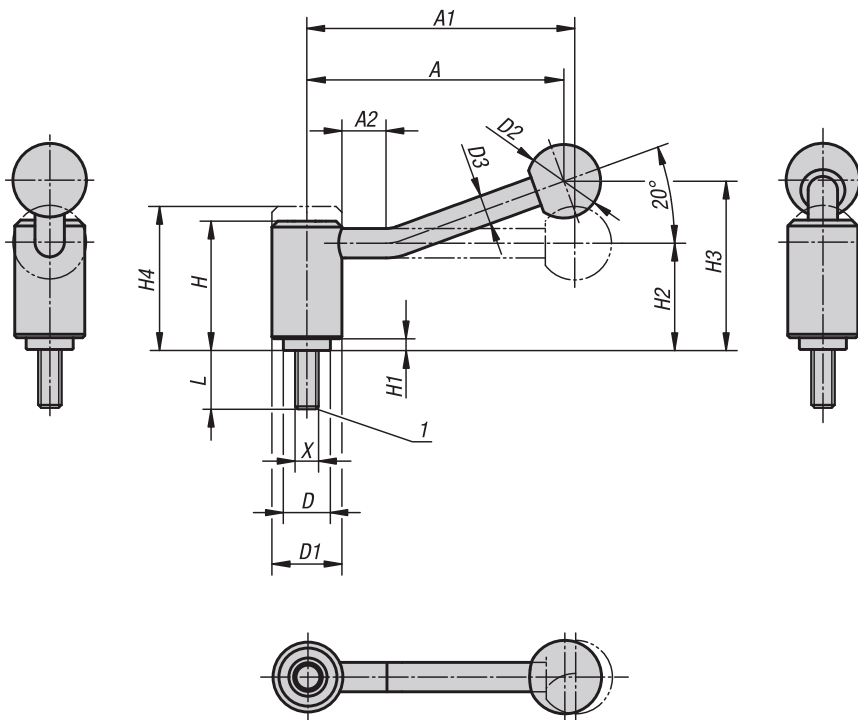
K0109.1082X30 (include length L)

On request:

Other external threads, screw lengths and special versions.
Dimensions "H1", "A" and "A1" available in other lengths at extra charge.

Drawing reference:

1) flat point DIN 78



KIPP Tension levers, external thread, stainless steel

Order No. 0°	Order No. 20°	Size	X	D	D1	D2	D3	H	H1	H2	H3	H4	A	A1	A2	No. of teeth	L
K0109.1082X	K0109.1081X	1	M8	16	24	25	10	44,5	4,5	37	-/58,5	49,5	-/88	92/-	-/15	22	15/20/25/30/40/50/60
K0109.1102X	K0109.1101X	1	M10	16	24	25	10	44,5	4,5	37	-/58,5	49,5	-/88	92/-	-/15	22	15/20/25/30/40/50/60
K0109.1122X	K0109.1121X	1	M12	16	24	25	10	44,5	4,5	37	-/58,5	49,5	-/88	92/-	-/15	22	15/20/25/30/40/50/60
K0109.2122X	K0109.2121X	2	M12	19	28	32	12	51,5	5,5	42	-/68,5	57,5	-/106	111/-	-/15	24	20/25/30/40/50/60
K0109.3122X	K0109.3121X	3	M12	23	33	32	13	58	6	47	-/81	65	-/128,5	134,5/-	-/15	26	20/25/30/40/50/60/70/80/90
K0109.3162X	K0109.3161X	3	M16	23	33	32	13	58	6	47	-/81	65	-/128,5	134,5/-	-/15	26	20/25/30/40/50/60/70/80/90
K0109.4162X	K0109.4161X	4	M16	30	41	32	13	68,5	7,5	56,5	-/89,5	76,5	-/128,5	134/-	-/15	36	30/40/50/60/70/80/90

Tension levers safety

internal thread



Material:

Steel parts grade 5.8.
Ball knob black plastic.

Version:

Plastic-coated with fine texture, black

Sample order:

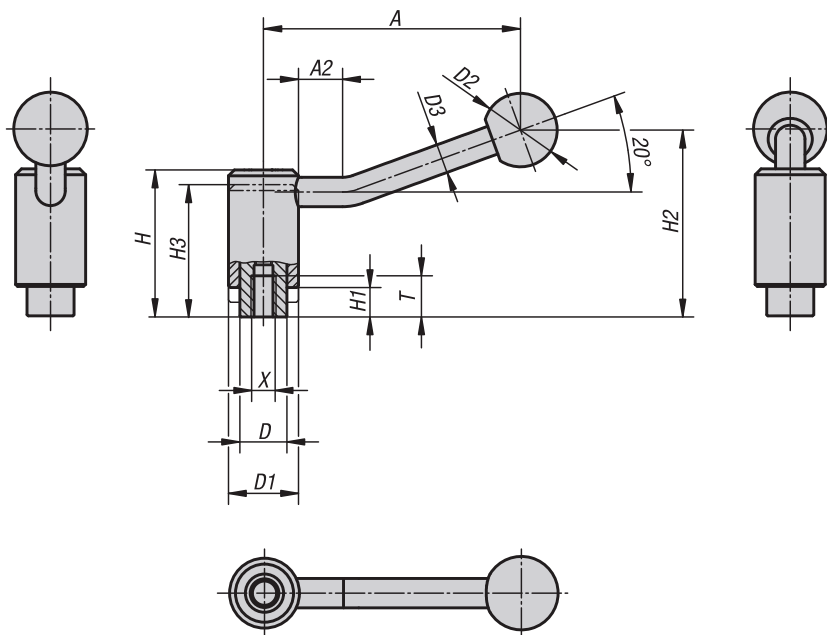
K0112.1108

Method of operation:

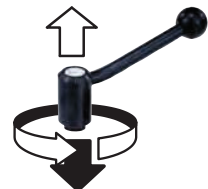
To operate safety tension levers, press the handle down until the teeth are fully engaged. The object concerned can now be clamped or released. Spring pressure releases the locking mechanism immediately, thereby restoring the safety function (handle can be turned effortlessly).

On request:

Special versions.
Dimensions "H1" and "A" available in other lengths at extra charge.



press to engage
(safety function)



KIPP Tension levers, safety, with internal thread

Order No.	Size	X	T	D	D1	D2	D3	H	H1	H2	H3	A	A2	No. of teeth
K0112.1108	1	M8	14	16	24	25	10	49,5	9,5	63,5	44,5	88	15	22
K0112.1110	1	M10	14	16	24	25	10	49,5	9,5	63,5	44,5	88	15	22
K0112.1210	2	M10	17	19	28	32	12	56,5	10,5	74	51	106	15	24
K0112.1212	2	M12	17	19	28	32	12	56,5	10,5	74	51	106	15	24
K0112.1312	3	M12	23	23	33	32	13	64,5	12,5	87,5	57,5	128,5	15	26

K0112



Tension levers safety

external thread



Material:

Steel parts grade 5.8.
Ball knob black plastic.

Version:

Plastic-coated with fine texture, black

Sample order:

K0112.1108X30 (include length L)

Method of operation:

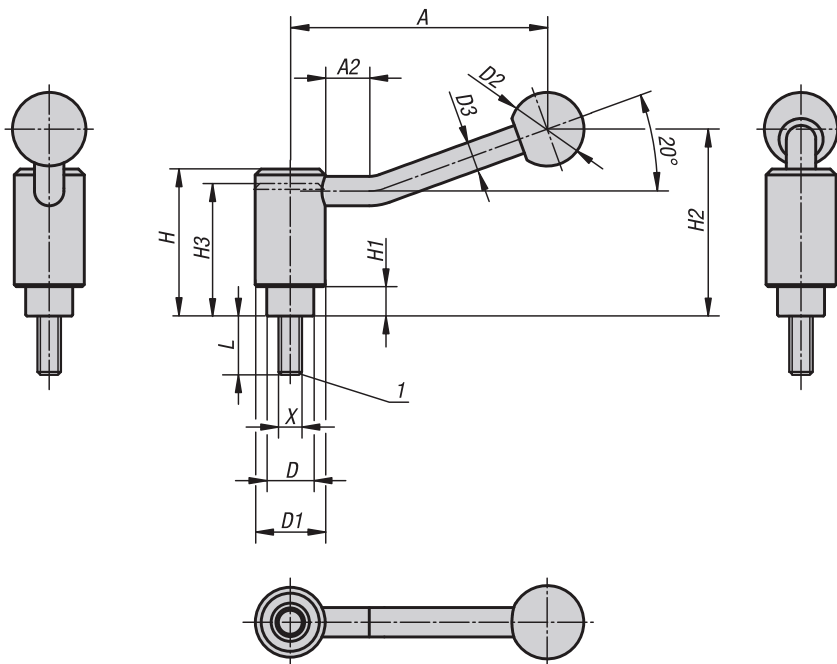
To operate safety tension levers, press the handle down until the teeth are fully engaged. The object concerned can now be clamped or released. Spring pressure releases the locking mechanism immediately, thereby restoring the safety function (handle can be turned effortlessly).

On request:

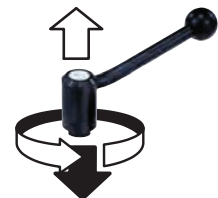
Other external threads, screw lengths and special versions.
Dimensions "H1" and "A" available in other lengths at extra charge.

Drawing reference:

1) flat point DIN 78



press to engage
(safety function)



KIPP Tension levers, safety, with external thread

Order No.	Size	X	D	D1	D2	D3	H	H1	H2	H3	A	A2	No. of teeth	L
K0112.1108X20	1	M8	16	24	25	10	49,5	9,5	63,5	44,5	88	15	22	20/25/30/40/50/60
K0112.1110X20	1	M10	16	24	25	10	49,5	9,5	63,5	44,5	88	15	22	20/25/30/40/50/60
K0112.1112X20	1	M12	16	24	25	10	49,5	9,5	63,5	44,5	88	15	22	20/25/30/40/50/60
K0112.1212X20	2	M12	19	28	32	12	56,5	10,5	74	51	106	15	24	20/25/30/40/50/60
K0112.1312X25	3	M12	23	33	32	13	64,5	12,5	87,5	57,5	128,5	15	26	25/30/40/50/60

K0114



Tension levers flat

internal thread

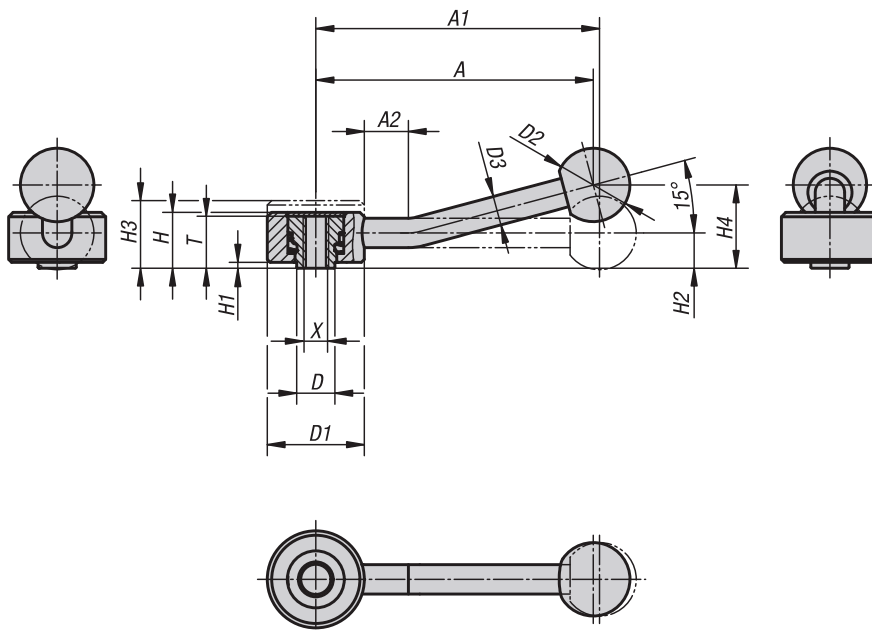


Material:
Steel parts grade 5.8.
Ball knob black plastic.

Version:
Black oxidised.

Sample order:
K0114.1061

On request:
Other internal threads and special versions.
Dimensions "H1", "A" and "A1" available in other lengths at extra charge.



KIPP Tension levers, flat, with internal thread

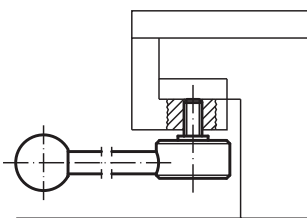
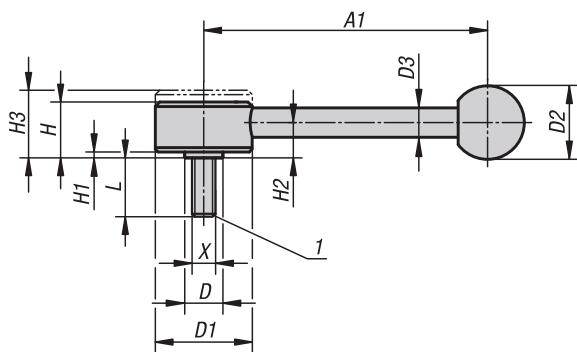
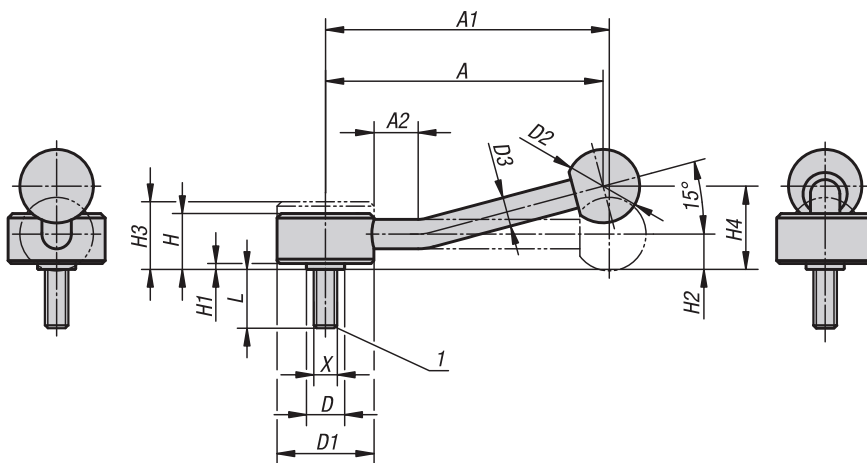
Order No. 0°	Order No. 15°	Size	X	T	D	D1	D2	D3	H	H1	H2	H3	H4	A	A1	A2	No. of teeth
K0114.1061	K0114.1062	1	M6	18	13,5	33	25	10	19	2	12	23	-/29	-/100	102/-	-/15	26
K0114.1081	K0114.1082	1	M8	18	13,5	33	25	10	19	2	12	23	-/29	-/100	102/-	-/15	26
K0114.2101	K0114.2102	2	M10	21	19	41	30	12	22	2	13,5	26	-/38	-/127	131/-	-/15	30
K0114.2121	K0114.2122	2	M12	21	19	41	30	12	22	2	13,5	26	-/38	-/127	131/-	-/15	30
K0114.3121	K0114.3122	3	M12	27	23	45	37	14	28	2	17	33	-/48	-/145	148/-	-/15	36

K0114



Tension levers flat

external thread



Material:

Steel parts grade 5.8.
Ball knob black plastic.

Version:

Black oxidised.

Sample order:

K0114.1081X30 (include length L)

On request:

Other external threads, screw lengths and special versions.
Dimensions "H1", "A" and "A1" available in other lengths at extra charge.

Drawing reference:

1) flat point DIN 78

KIPP Tension levers, flat, external thread

Order No. 0°	Order No. 15°	Size	X	D	D1	D2	D3	H	H1	H2	H3	H4	A	A1	A2	No. of teeth	L
K0114.1081X	K0114.1082X	1	M8	13,5	33	25	10	19	2	12	23	-/29	-/100	102/-	-/15	20	15/20/25/30/40/50/60
K0114.1101X	K0114.1102X	1	M10	13,5	33	25	10	19	2	12	23	-/29	-/100	102/-	-/15	20	15/20/25/30/40/50/60
K0114.2101X	K0114.2102X	2	M10	19	41	30	12	22	2	13,5	26	-/38	-/127	131/-	-/15	24	20/25/30/40/50/60
K0114.2121X	K0114.2122X	2	M12	19	41	30	12	22	2	13,5	26	-/38	-/127	131/-	-/15	24	20/25/30/40/50/60
K0114.3121X	K0114.3122X	3	M12	23	45	37	14	28	2	17	33	-/48	-/145	148/-	-/15	26	20/25/30/40/50/60

K0129

**PUZZLE
ADVANCE**
COMERCIO DE ACCESÓRIOS INDUSTRIAIS

Tension levers flat

internal thread, stainless steel

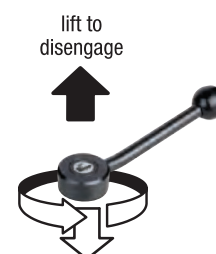
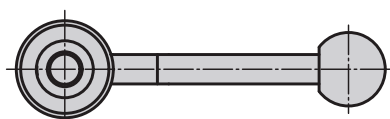
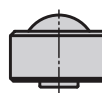
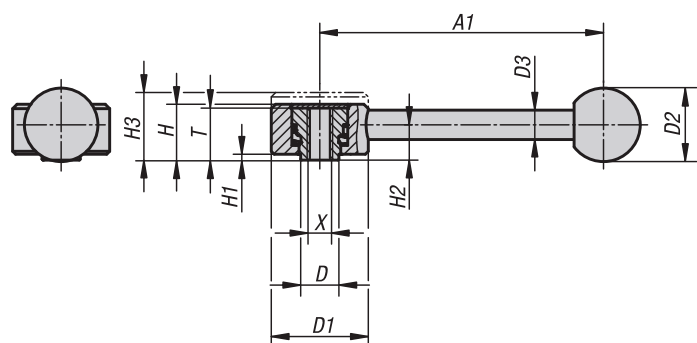


Material:
Steel parts stainless steel 1.4305.
Ball knob black plastic.

Version:
Steel parts bright.

Sample order:
K0129.1081

On request:
Other internal threads and special versions.
Dimensions "H1" and "A1" available in other lengths at extra charge.



KIPP Tension levers, flat, internal thread, stainless steel

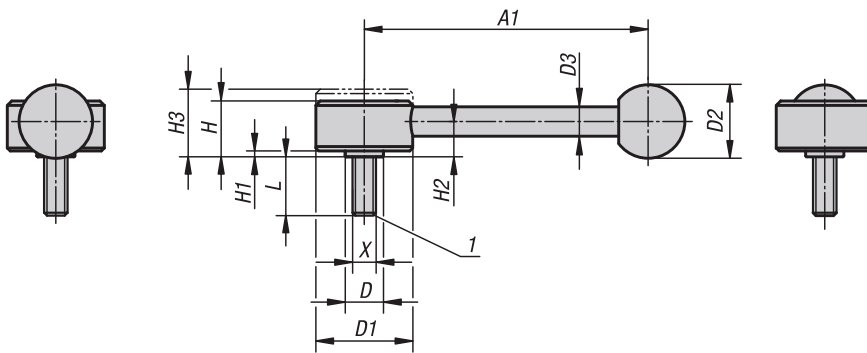
Order No.	Size	X	T	D	D1	D2	D3	H	H1	H2	H3	A1	No. of teeth
K0129.1081	1	M8	18	13,5	33	25	10	19	2	12	23	102	26
K0129.2101	2	M10	21	19	41	30	12	22	2	13,5	26	131	30
K0129.2121	2	M12	21	19	41	30	12	22	2	13,5	26	131	30

K0129

**PUZZLE
ADVANCE**
COMERCIO DE ACCESÓRIOS INDUSTRIAIS

Tension levers flat

external thread, stainless steel



Material:

Steel parts stainless steel 1.4305.
Ball knob black plastic.

Version:

Steel parts bright.

Sample order:

K0129.1081X40 (include length L)

On request:

Other external threads, screw lengths and special versions.

Dimensions "H1" and "A1" available in other lengths at extra charge.

Drawing reference:

1) flat point DIN 78



KIPP Tension levers flat, external thread, stainless steel

Order No.	Size	X	D	D1	D2	D3	H	H1	H2	H3	A1	No. of teeth	L
K0129.1081X	1	M8	13,5	33	25	10	19	2	12	23	102	26	30/40/50
K0129.2101X	2	M10	19	41	30	12	22	2	13,5	26	131	30	30/40/50/60
K0129.2121X	2	M12	19	41	30	12	22	2	13,5	26	131	30	30/40/50/60

Levers

DIN 99



Material:

Steel.

Version:

Polished.

Sample order:

K0174.212

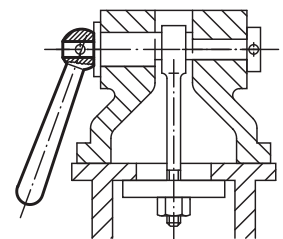
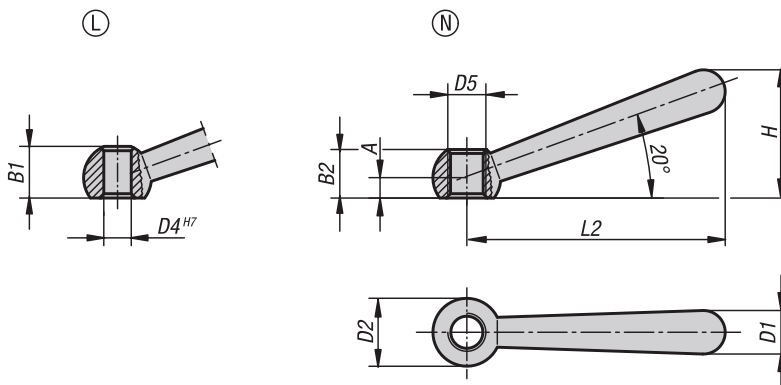
Note:

To fix the lever to another element, gluing is often more cost-effective than pinning.

Drawing reference:

Form L: with hole

Form N: with internal thread



KIPP Levers DIN 99

Order No. Form L	Order No. Form N	A	D4	D5	B1	B2	D1	D2 ball	L2	H
K0174.106	K0174.206	4	6/-	-/M6	9,5/-	-/9,5	8	12	48	24
K0174.108	K0174.208	5	8/-	-/M8	12/-	-/12	10	16	60	30,5
K0174.110	K0174.210	6	10/-	-/M10	14,5/-	-/14,5	13	20	76	38
K0174.112	K0174.212	7,5	12/-	-/M12	18,5/-	-/18,5	16	25	95	47
K0174.116	K0174.216	10	16/-	-/M16	24/-	-/24	20	32	119	59,5

Tension levers



Material:

Steel parts grade 5.8.
Ball knob black plastic.

Version:

Black oxidised.

Sample order:

K0176.208

Note:

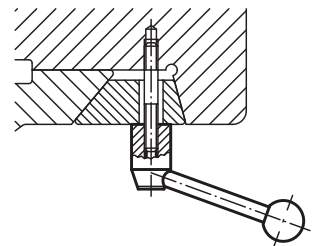
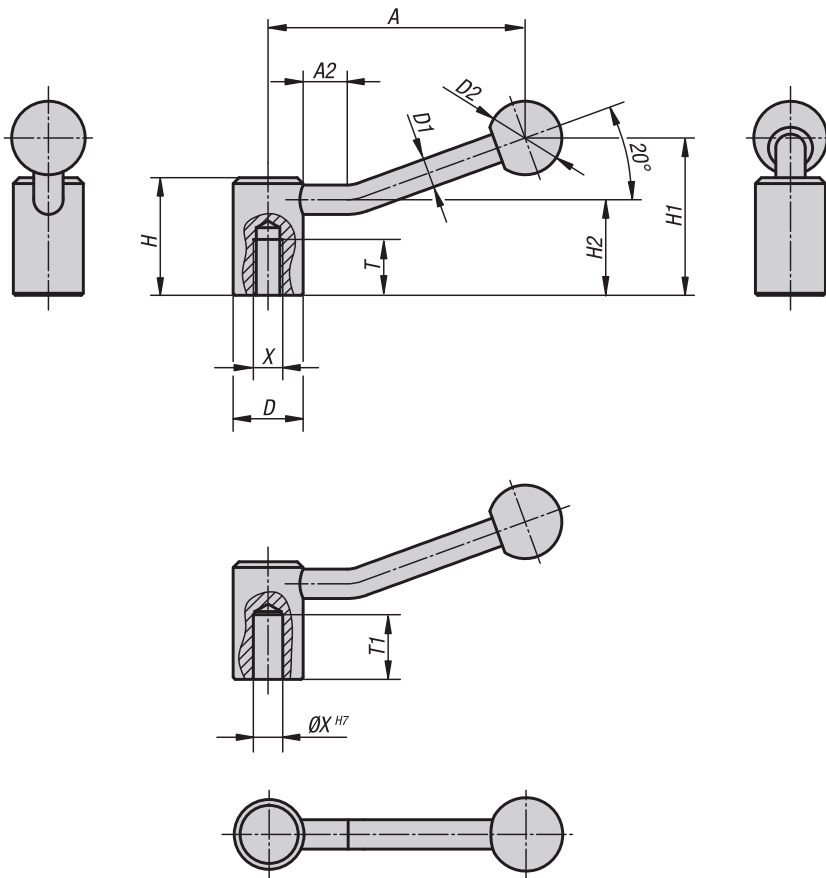
Tension levers can be used for simple clamping or control operations.

Where applicable, there must be enough space available so that the grip can be rotated 360°.

On request:

Other internal threads, reamed holes and special versions.

Dimension "A" available in other lengths at extra charge.



KIPP Tension levers

Order No.	Version	Size	X	T	T1	D	D1	D2	H	H1	H2	A	A2
K0176.208	internal thread	1	M8	18	-	24	10	25	40	52,5	32,5	84,5	15
K0176.210	internal thread	1	M10	19	-	24	10	25	40	52,5	32,5	84,5	15
K0176.212	internal thread	2	M12	20	-	28	12	32	46	61	36,5	100	15
K0176.216	internal thread	3	M16	23	-	33	13	32	52	72	41	121	15
K0176.220	internal thread	4	M20	26	-	41	13	32	61	80	49	123	15
K0176.108	reamed hole	1	8	-	22	24	10	25	40	52,5	32,5	84,5	15
K0176.110	reamed hole	1	10	-	22	24	10	25	40	52,5	32,5	84,5	15
K0176.112	reamed hole	2	12	-	25	28	12	32	46	61	36,5	100	15
K0176.114	reamed hole	2	14	-	25	28	12	32	46	61	36,5	100	15
K0176.116	reamed hole	3	16	-	28	33	13	32	52	72	41	121	15
K0176.118	reamed hole	3	18	-	28	33	13	32	52	72	41	121	15

K0177**PUZZLE
ADVANCE**
COMERCIO DE ACCESORIOS INDUSTRIALES

Tension levers flat

**Material:**

Steel parts grade 5.8.

Ball knob black Duroplast PF 31

Version:

Black oxidised.

Sample order:

K0177.206

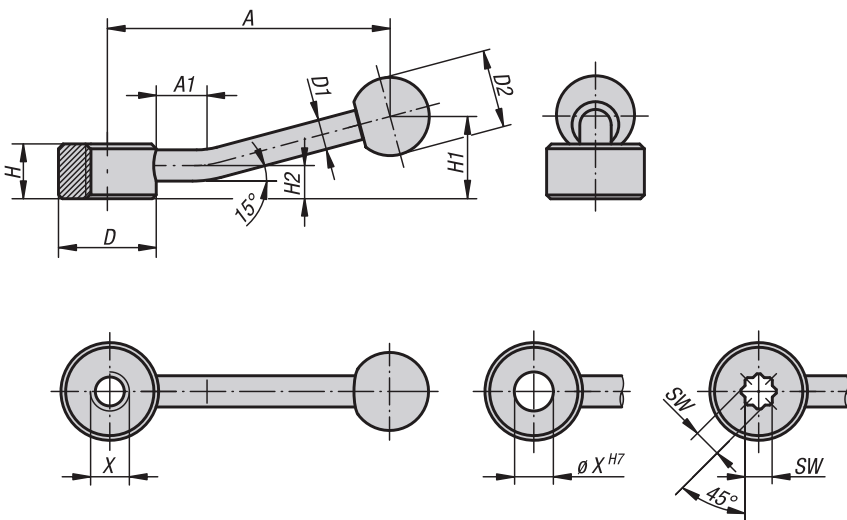
Note:

Flat tension levers can be used for simple clamping or control operations. Where applicable, there must be enough space available so that the grip can be rotated 360°.

The version with star socket is designed to allow a 45° change of position.

On request:

Other internal threads, reamed holes and star sockets. Dimension "A" available in other lengths at extra charge.



Tension levers flat



KIPP Tension levers flat with internal thread

Order No.	Version	Size	X	D	D1	D2	H	H1	H2	A	A1
K0177.206	internal thread	1	M6	25	8	20	14	22	8,5	75	15
K0177.208	internal thread	1	M8	25	8	20	14	22	8,5	75	15
K0177.210	internal thread	1	M10	25	8	20	14	22	8,5	75	15
K0177.212	internal thread	2	M12	33	10	25	17	27	10	100	15
K0177.216	internal thread	2	M16	33	10	25	17	27	10	100	15
K0177.220	internal thread	3	M20	41	12	30	20	36	11,5	128	15
K0177.224	internal thread	3	M24	41	12	30	20	36	11,5	128	15

KIPP Tension lever flat with reamed hole

Order No.	Version	Size	X	D	D1	D2	H	H1	H2	A	A1
K0177.106	reamed hole	1	6	25	8	20	14	22	8,5	75	15
K0177.108	reamed hole	1	8	25	8	20	14	22	8,5	75	15
K0177.110	reamed hole	1	10	25	8	20	14	22	8,5	75	15
K0177.112	reamed hole	2	12	33	10	25	17	27	10	100	15
K0177.116	reamed hole	2	16	33	10	25	17	27	10	100	15
K0177.120	reamed hole	3	20	41	12	30	20	36	11,5	128	15
K0177.124	reamed hole	3	24	41	12	30	20	36	11,5	128	15

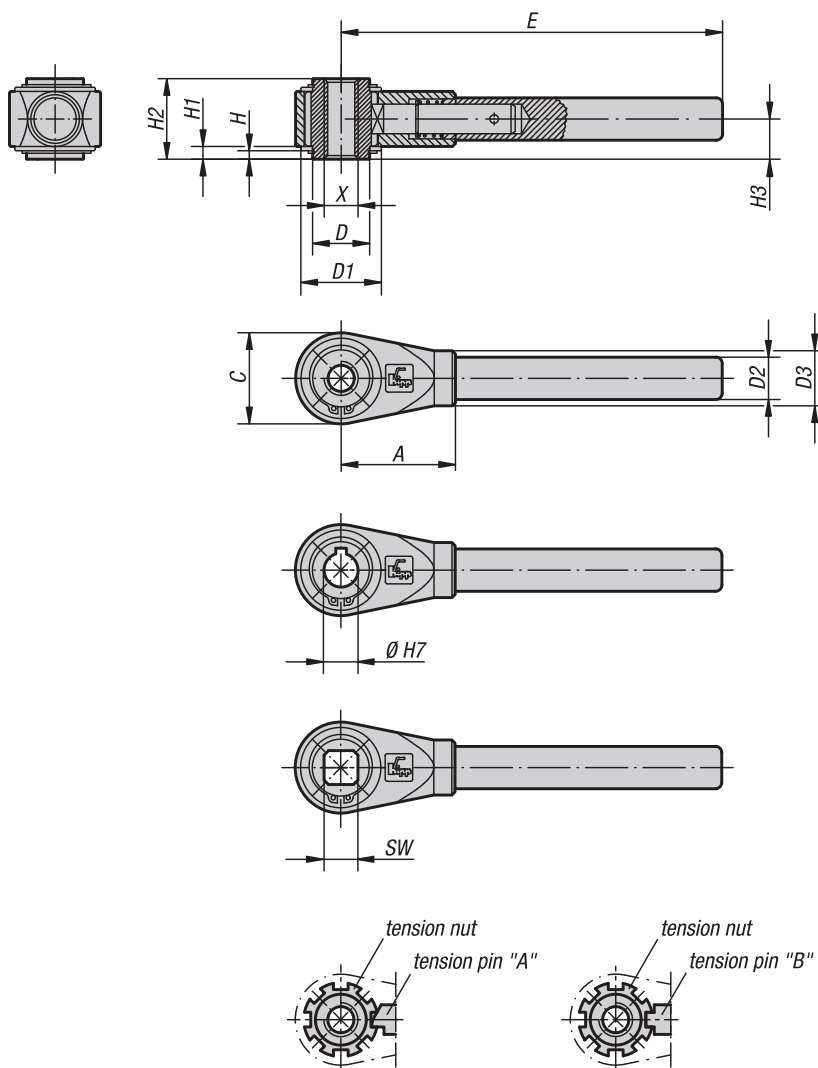
KIPP Tension lever flat with star socket

Order No.	Version	Size	SW	D	D1	D2	H	H1	H2	A	A1
K0177.305	star socket	1	5,5	25	8	20	14	22	8,5	75	15
K0177.307	star socket	1	7	25	8	20	14	22	8,5	75	15
K0177.309	star socket	2	9	33	10	25	17	27	10	100	15
K0177.311	star socket	2	11	33	10	25	17	27	10	100	15
K0177.314	star socket	3	14	41	12	30	20	36	11,5	128	15

K0128

**PUZZLE
ADVANCE**
COMERCIO DE ACCESORIOS INDUSTRIALES

Ratchet levers



Material:

Housing carbon steel, tension nut and tension pin case-hardened steel.

Version:

Black oxidised.
Matt-finished or high-polish chrome-plated versions available at extra charge.

Sample order:

K0128.316

Note:

Tension Pin A standard version (for ratchet action):
Use for clamping and releasing in limited space and when considerable travel is involved. In order to change the tightening direction, the handle must be reversed by 180°.

Tension Pin B special version:

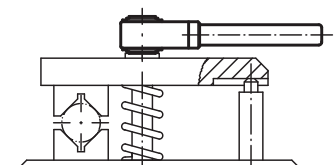
Use for clamping and releasing in limited space and when short travel is involved. The handle is not reversed in order to change the tightening direction. It must be pulled out before it can be engaged in the next slot.

On request:

Other internal threads, reamed holes and square sockets.

Dimension "E" available in other lengths at extra charge.

Special version: Tension pin B.



Ratchet levers



KIPP Ratchet levers with internal thread

Order No.	Size	X	D	D1	D2	D3	H	H1	H2	H3	C	A	E	No. of index slots
K0128.310	1	M10	22	33	17	22	3	4,5	31	15,5	36	48	150	7
K0128.312	1	M12	22	33	17	22	3	4,5	31	15,5	36	48	150	7
K0128.314	2	M14	27	38	20	26	4	6	38	19	43	54	180	8
K0128.316	2	M16	27	38	20	26	4	6	38	19	43	54	180	8
K0128.318	3	M18	35	45	24	30	4	6	42	21	51	70	230	8
K0128.320	3	M20	35	45	24	30	4	6	42	21	51	70	230	8
K0128.322	4	M22	42	56	28	35	4	6	47	23,5	61	80	300	9
K0128.324	4	M24	42	56	28	35	4	6	47	23,5	61	80	300	9
K0128.327	4	M27	42	56	28	35	4	6	47	23,5	61	80	300	9
K0128.330	5	M30	60	75	32	38	5	7,5	53	26,5	82	110	400	11
K0128.336	5	M36	60	75	32	38	5	7,5	53	26,5	82	110	400	11
K0128.342	5	M42	60	75	32	38	5	7,5	53	26,5	82	110	400	11

KIPP Ratchet levers with reamed hole

Order No.	Size	Reamed hole H7 with DIN 6885-1 keyway	D	D1	D2	D3	H	H1	H2	H3	C	A	E	No. of index slots
K0128.412	1	12	22	33	17	22	3	4,5	31	15,5	36	48	150	7
K0128.414	2	14	27	38	20	26	4	6	38	19	43	54	180	8
K0128.415	2	15	27	38	20	26	4	6	38	19	43	54	180	8
K0128.416	2	16	27	38	20	26	4	6	38	19	43	54	180	8
K0128.418	3	18	35	45	24	30	4	6	42	21	51	70	230	8
K0128.420	3	20	35	45	24	30	4	6	42	21	51	70	230	8
K0128.422	4	22	42	56	28	35	4	6	47	23,5	61	80	300	9
K0128.425	4	25	42	56	28	35	4	6	47	23,5	61	80	300	9
K0128.427	4	27	42	56	28	35	4	6	47	23,5	61	80	300	9
K0128.430	5	30	60	75	32	38	5	7,5	53	26,5	82	110	400	11
K0128.436	5	36	60	75	32	38	5	7,5	53	26,5	82	110	400	11

KIPP Ratchet levers with square socket

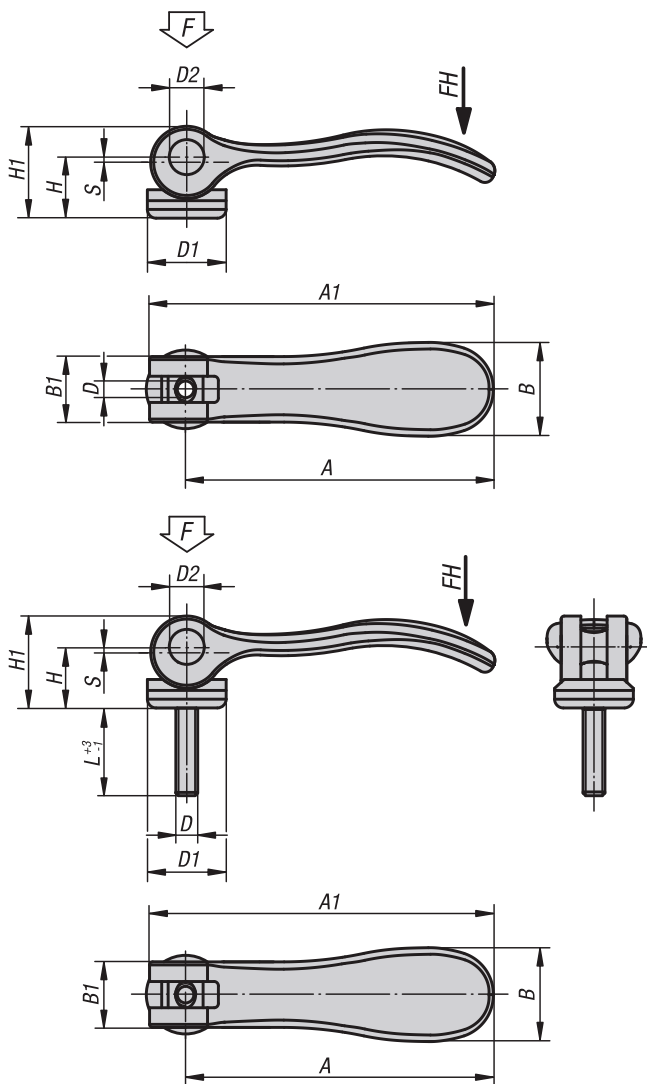
Order No.	Size	Square socket SW	D	D1	D2	D3	H	H1	H2	H3	C	A	E	No. of index slots
K0128.510	1	10	22	33	17	22	3	4,5	31	15,5	36	48	150	7
K0128.512	1	12	22	33	17	22	3	4,5	31	15,5	36	48	150	7
K0128.513	2	13	27	38	20	26	4	6	38	19	43	54	180	8
K0128.514	2	14	27	38	20	26	4	6	38	19	43	54	180	8
K0128.517	3	17	35	45	24	30	4	6	42	21	51	70	230	8
K0128.519	4	19	42	56	28	35	4	6	47	23,5	61	80	300	9
K0128.520	4	20	42	56	28	35	4	6	47	23,5	61	80	300	9
K0128.522	4	22	42	56	28	35	4	6	47	23,5	61	80	300	9
K0128.524	4	24	42	56	28	35	4	6	47	23,5	61	80	300	9
K0128.530	5	30	60	75	32	38	5	7,5	53	26,5	82	110	400	11

K0005

**PUZZLE
ADVANCE**
COMERCIO DE ACCESÓRIOS INDUSTRIAIS

Cam levers

internal and external thread, steel or stainless steel



Material:

Handles cast aluminum EN AC-46200.
Thrust washer plastic PA 66 GF 35-X fibreglass reinforced.
Hinge pin stainless steel 1.4305.
Studs and washer steel grade 5.8 or stainless steel 1.4305.

Version:

Handles fine structured powder-coated, black or red RAL 3003.
Thrust washer black.
Hinge pin bright.
Studs and washer blue passivated steel or bright stainless steel.

Sample order:

K0005.101105X20 (include length L)

Note:

Plastics are subject to creeping under load (retardation).

Cam levers

internal and external thread, steel or stainless steel



KIPP Cam levers with internal thread, lever black

Order No. steel	Order No. stainless steel	D	D1	D2	B	B1	H	H1	A	A1	Stroke S	Clamping force F (kN)	Hand force FH N
K0005.9501103	K0005.9511103	M3	12	6	14,4	11,5	9	13	36,2	41,7	1	1,5	90
K0005.9501104	K0005.9511104	M4	12	6	14,4	11,5	9	13	36,2	41,7	1	1,5	90
K0005.0501104	K0005.0511104	M4	15,4	8	18	13	11,2	17	52,3	59,1	1	2,5	100
K0005.0501105	K0005.0511105	M5	15,4	8	18	13	11,2	17	52,3	59,1	1	2,5	100
K0005.1501105	K0005.1511105	M5	18,1	9	21,5	15	14,5	22	70,4	79,2	1,2	4	120
K0005.1501106	K0005.1511106	M6	18,1	9	21,5	15	14,5	22	70,4	79,2	1,2	4	120
K0005.2501108	K0005.2511108	M8	27,1	11	33,3	24	18	28,5	96	108	1,5	8	350

KIPP Cam levers with internal thread, grip red

Order No. steel	Order No. stainless steel	D	D1	D2	B	B1	H	H1	A	A1	Stroke S	Clamping force F (kN)	Hand force FH N
K0005.9501403	K0005.9511403	M3	12	6	14,4	11,5	9	13	36,2	41,7	1	1,5	90
K0005.9501404	K0005.9511404	M4	12	6	14,4	11,5	9	13	36,2	41,7	1	1,5	90
K0005.0501404	K0005.0511404	M4	15,4	8	18	13	11,2	17	52,3	59,1	1	2,5	100
K0005.0501405	K0005.0511405	M5	15,4	8	18	13	11,2	17	52,3	59,1	1	2,5	100
K0005.1501405	K0005.1511405	M5	18,1	9	21,5	15	14,5	22	70,4	79,2	1,2	4	120
K0005.1501406	K0005.1511406	M6	18,1	9	21,5	15	14,5	22	70,4	79,2	1,2	4	120
K0005.2501408	K0005.2511408	M8	27,1	11	33,3	24	18	28,5	96	108	1,5	8	350

KIPP Cam levers with external thread, grip black

Order No. steel	Order No. stainless steel	D	D1	D2	B	B1	H	H1	A	A1	L	Stroke S	Clamping force F (kN)	Hand force FH N
K0005.9501103X	K0005.9511103X	M3	12	6	14,4	11,5	9	13	36,2	41,7	10/15/30	1	1,5	90
K0005.9501104X	K0005.9511104X	M4	12	6	14,4	11,5	9	13	36,2	41,7	10/15/30	1	1,5	90
K0005.0501104X	K0005.0511104X	M4	15,4	8	18	13	11,2	17	52,3	59,1	15/20/30	1	2,5	100
K0005.0501105X	K0005.0511105X	M5	15,4	8	18	13	11,2	17	52,3	59,1	20/30/40/50	1	2,5	100
K0005.1501105X	K0005.1511105X	M5	18,1	9	21,5	15	14,5	22	70,4	79,2	20/30/40/50	1,2	4	120
K0005.1501106X	K0005.1511106X	M6	18,1	9	21,5	15	14,5	22	70,4	79,2	20/30/40/50	1,2	4	120
K0005.2501108X	K0005.2511108X	M8	27,1	11	33,3	24	18	28,5	96	108	25/30/40/50	1,5	8	350
K0005.2501110X	K0005.2511110X	M10	27,1	11	33,3	24	18	28,5	96	108	25/30/40/50	1,5	8	350

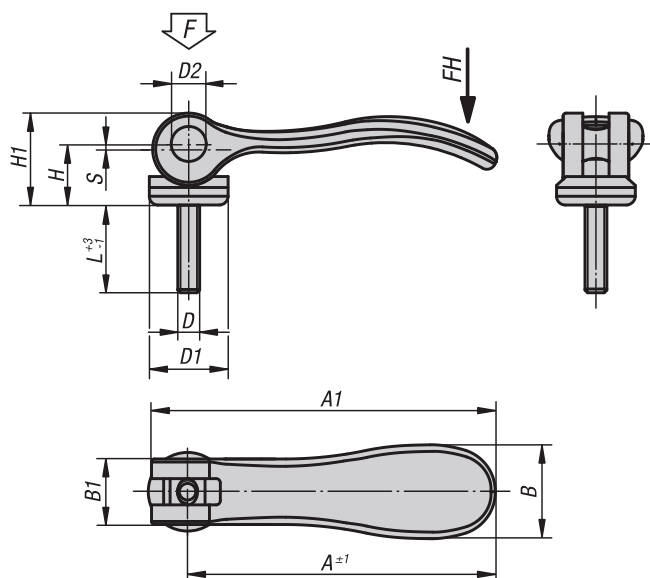
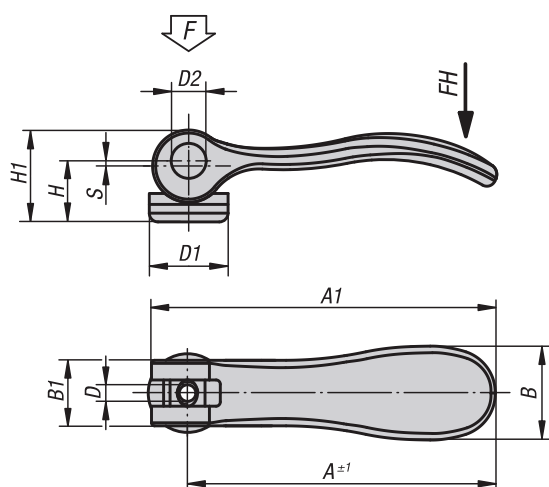
KIPP Cam levers with external thread, grip red

Order No. steel	Order No. stainless steel	D	D1	D2	B	B1	H	H1	A	A1	L	Stroke S	Clamping force F (kN)	Hand force FH N
K0005.9501403X	K0005.9511403X	M3	12	6	14,4	11,5	9	13	36,2	41,7	10/15/30	1	1,5	90
K0005.9501404X	K0005.9511404X	M4	12	6	14,4	11,5	9	13	36,2	41,7	10/15/30	1	1,5	90
K0005.0501404X	K0005.0511404X	M4	15,4	8	18	13	11,2	17	52,3	59,1	15/20/30	1	2,5	100
K0005.0501405X	K0005.0511405X	M5	15,4	8	18	13	11,2	17	52,3	59,1	20/30/40/50	1	2,5	100
K0005.1501405X	K0005.1511405X	M5	18,1	9	21,5	15	14,5	22	70,4	79,2	20/30/40/50	1,2	4	120
K0005.1501406X	K0005.1511406X	M6	18,1	9	21,5	15	14,5	22	70,4	79,2	20/30/40/50	1,2	4	120
K0005.2501408X	K0005.2511408X	M8	27,1	11	33,3	24	18	28,5	96	108	25/30/40/50	1,5	8	350

K0788**PUZZLE
ADVANCE**
COMERCIO DE ACCESÓRIOS INDUSTRIAIS

Cam levers

internal and external thread, steel

**Material:**

Handle steel 1.0401.

Thrust washer plastic PA 66 GF 35-X fibreglass reinforced.

Hinge pin stainless steel 1.4305.

Stud and washer steel, grade 5.8.

Version:

Handle, stud and washer blue passivated.

Thrust washer black.

Hinge pin bright.

Sample order:

K0788.1502205

Note:

Plastics are subject to creeping under load (retardation).

K0788**PUZZLE
ADVANCE**
COMERCIO DE ACCESÓRIOS INDUSTRIAIS

Cam levers

internal and external thread, steel



KIPP Cam levers with internal thread, steel

Order No.	Size	D	D1	D2	B	B1	H	H1	A	A1	Stroke S	Clamping force F (kN)	Hand force FH N
K0788.1502205	1	M5	18,1	9	21,5	15	14,5	22	70,4	79,2	1,2	4	120
K0788.1502206	1	M6	18,1	9	21,5	15	14,5	22	70,4	79,2	1,2	4	120
K0788.2502208	2	M8	27,1	11	33,2	24	18	28,5	96	108	1,5	8	350

KIPP Cam levers with external thread, steel

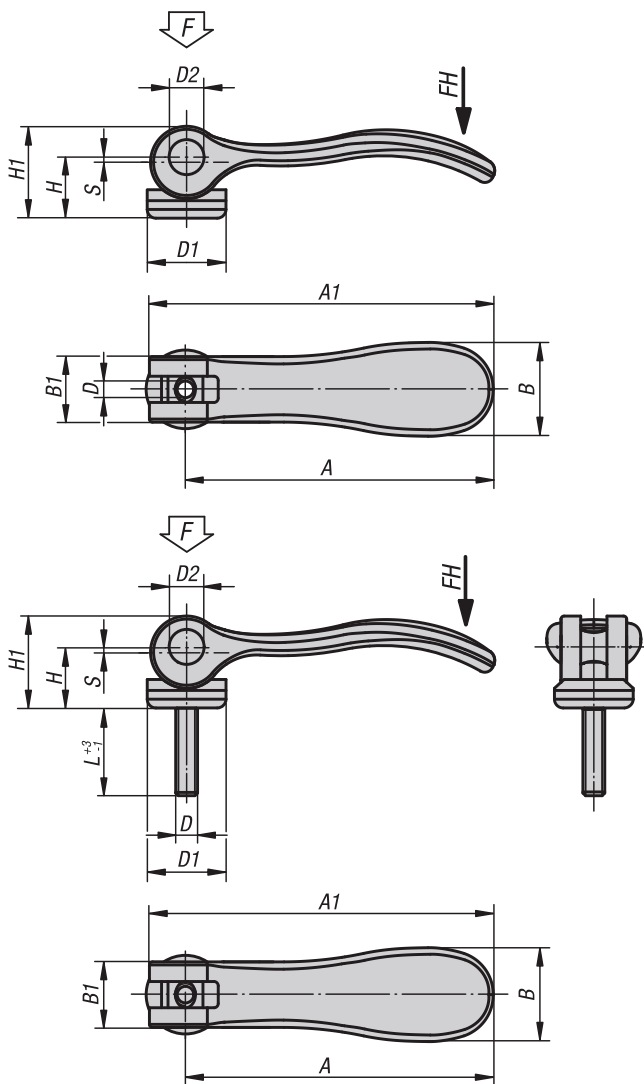
Order No.	Size	D	D1	D2	B	B1	H	H1	A	A1	L	Stroke S	Clamping force F (kN)	Hand force FH N
K0788.1502205X	1	M5	18,1	9	21,5	15	14,5	22	70,4	79,2	20/30/40/50	1,2	4	120
K0788.1502206X	1	M6	18,1	9	21,5	15	14,5	22	70,4	79,2	20/30/40/50	1,2	4	120
K0788.2502208X	2	M8	27,1	11	33,2	24	18	28,5	96	108	25/30/40/50	1,5	8	350

K0645

**PUZZLE
ADVANCE**
COMERCIO DE ACCESÓRIOS INDUSTRIAIS

Cam levers

internal and external thread, stainless steel



Material:

Handles 1.4308.

Thrust washer plastic PA 66 GF 35-X fibreglass reinforced.

Hinge pin, washer and screw 1.4305.

Version:

Handle electropolished or blasted.

Thrust washer black.

Hinge pin, washer and screw bright.

Sample order:

K0645.1512005X20 (include length L)

Note:

Plastics are subject to creeping under load (retardation).

Cam levers

internal and external thread, stainless steel



KIPP Cam levers with internal thread, stainless steel

Order No.	Surface	D	D1	D2	B	B1	H	H1	A	A1	Stroke S	Clamping force F (kN)	Hand force FH N
K0645.9512003	electropolished	M3	12	6	14,4	11,5	9	13	36,2	41,7	1	1,5	90
K0645.9512004	electropolished	M4	12	6	14,4	11,5	9	13	36,2	41,7	1	1,5	90
K0645.0512004	electropolished	M4	15,4	8	18	13	11,2	17	52,3	59,1	1	2,5	100
K0645.0512005	electropolished	M5	15,4	8	18	13	11,2	17	52,3	59,1	1	2,5	100
K0645.1512005	electropolished	M5	18,1	9	21,5	15	14,5	22	70,4	79,2	1,2	4	120
K0645.1512006	electropolished	M6	18,1	9	21,5	15	14,5	22	70,4	79,2	1,2	4	120
K0645.2512008	electropolished	M8	27,1	11	33,3	24	18	28,5	96	108	1,5	8	350
K0645.9512303	blasted	M3	12	6	14,4	11,5	9	13	36,2	41,7	1	1,5	90
K0645.9512304	blasted	M4	12	6	14,4	11,5	9	13	36,2	41,7	1	1,5	90
K0645.0512304	blasted	M4	15,4	8	18	13	11,2	17	52,3	59,1	1	2,5	100
K0645.0512305	blasted	M5	15,4	8	18	13	11,2	17	52,3	59,1	1	2,5	100
K0645.1512305	blasted	M5	18,1	9	21,4	15	14,5	22	70,4	79,2	1,2	4	120
K0645.1512306	blasted	M6	18,1	9	21,4	15	14,5	22	70,4	79,2	1,2	4	120
K0645.2512308	blasted	M8	27,1	11	33,3	24	18	28,5	96	108	1,5	8	350

KIPP Cam levers with external thread, stainless steel

Order No.	Surface	D	D1	D2	B	B1	H	H1	A	A1	L	Stroke S	Clamping force F (kN)	Hand force FH N
K0645.9512003X	electropolished	M3	12	6	14,4	11,5	9	13	36,2	41,7	10/15/30	1	1,5	90
K0645.9512004X	electropolished	M4	12	6	14,4	11,5	9	13	36,2	41,7	10/15/30	1	1,5	90
K0645.0512004X	electropolished	M4	15,4	8	18	13	11,2	17	52,3	59,1	15/20/30	1	2,5	100
K0645.0512005X	electropolished	M5	15,4	8	18	13	11,2	17	52,3	59,1	20/30/40/50	1	2,5	100
K0645.1512005X	electropolished	M5	18,1	9	21,5	15	14,5	22	70,4	79,5	20/30/40/50	1,2	4	120
K0645.1512006X	electropolished	M6	18,1	9	21,5	15	14,5	22	70,4	79,5	20/30/40/50	1,2	4	120
K0645.2512008X	electropolished	M8	27,1	11	33,3	24	18	28,5	96	108	25/30/40/50	1,5	8	350
K0645.2512010X	electropolished	M10	27,1	11	33,3	24	18	28,5	96	108	25/30/40/50	1,5	8	350
K0645.9512303X	blasted	M3	12	6	14,4	11,5	9	13	36,2	41,7	10/15/30	1	1,5	90
K0645.9512304X	blasted	M4	12	6	14,4	11,5	9	13	36,2	41,7	10/15/30	1	1,5	90
K0645.0512304X	blasted	M4	15,4	8	18	13	11,2	17	52,3	59,1	15/20/30	1	2,5	100
K0645.0512305X	blasted	M5	15,4	8	18	13	11,2	17	52,3	59,1	20/30/40/50	1	2,5	100
K0645.1512305X	blasted	M5	18,1	9	21,4	15	14,5	22	70,4	79,2	20/30/40/50	1,2	4	120
K0645.1512306X	blasted	M6	18,1	9	21,4	15	14,5	22	70,4	79,2	20/30/40/50	1,2	4	120
K0645.2512308X	blasted	M8	27,1	11	33,3	24	18	28,5	96	108	25/30/40/50	1,5	8	350

K0645

**PUZZLE
ADVANCE**
COMERCIO DE ACCESORIOS INDUSTRIALES

Cam levers, stainless steel

with internal or external thread, thrust washer stainless steel



Material:

Handle 1.4308.

Thrust washer 1.4034 stainless steel, hardened.

Hinge pin and stud 1.4305 stainless steel.

Version:

Handle electropolished or blasted.

Thrust washer, hinge pin and screw bright.

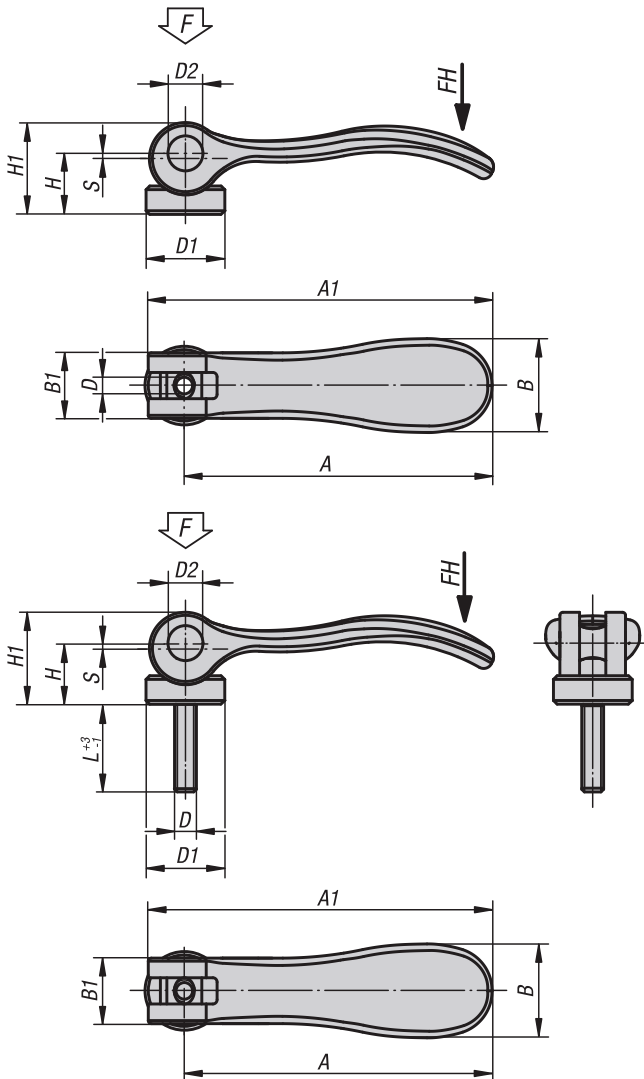
Sample order:

K0645.0541005X20 (include length L)

Note:

The thrust washer face is lightly greased before delivery.

The grease is FDA conform and is suitable for use in the foodstuff and pharmaceutical industries.



Cam levers, stainless steel

with internal or external thread, thrust washer stainless steel



KIPP Cam levers, stainless steel, with internal thread, thrust washer stainless steel

Order No. electropolished	Order No. blasted	D	D1	D2	B	B1	H	H1	A	A1	Stroke S	Clamping force F (kN)	Hand force FH N
K0645.9541003	K0645.9541303	M3	12	6	14,4	11,5	9	13,5	36,2	41,7	1	1,5	90
K0645.9541004	K0645.9541304	M4	12	6	14,4	11,5	9	13,5	36,2	41,7	1	1,5	90
K0645.0541004	K0645.0541304	M4	15,4	8	18	13	11,4	17,2	52,3	59,1	1	2,5	100
K0645.0541005	K0645.0541305	M5	15,4	8	18	13	11,4	17,2	52,3	59,1	1	2,5	100
K0645.1541005	K0645.1541305	M5	18	9	21,5	15	14,7	22	70,4	79,2	1,2	4	120
K0645.1541006	K0645.1541306	M6	18	9	21,5	15	14,7	22	70,4	79,2	1,2	4	120
K0645.2541008	K0645.2541308	M8	27	11	33,3	24	18,3	28,8	96	108	1,5	8	350

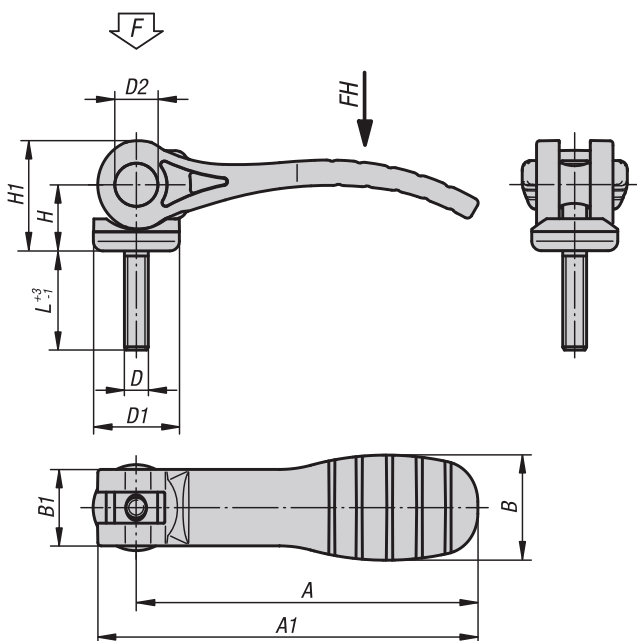
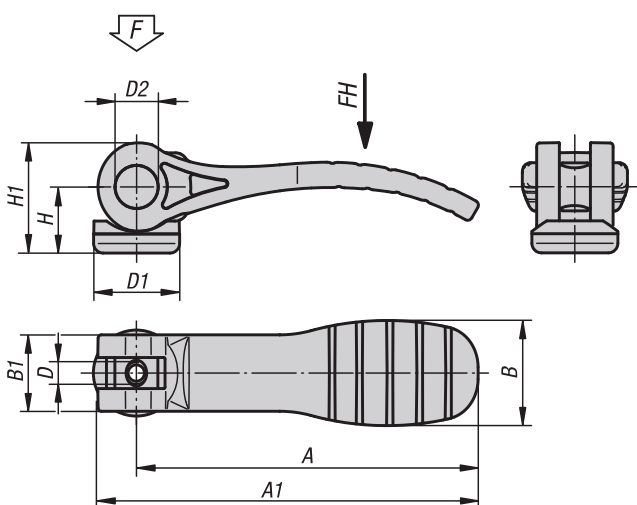
KIPP Cam levers, stainless steel, with external thread, thrust washer stainless steel

Order No. electropolished	Order No. blasted	D	D1	D2	B	B1	H	H1	A	A1	L	Stroke S	Clamping force F (kN)	Hand force FH N
K0645.9541003X	K0645.9541303X	M3	12	6	14,4	11,5	9	13,5	36,2	41,7	10/15/30	1	1,5	90
K0645.9541004X	K0645.9541304X	M4	12	6	14,4	11,5	9	13,5	36,2	41,7	10/15/30	1	1,5	90
K0645.0541004X	K0645.0541304X	M4	15,4	8	18	13	11,4	17,2	52,3	59,1	15/20/30	1	2,5	100
K0645.0541005X	K0645.0541305X	M5	15,4	8	18	13	11,4	17,2	52,3	59,1	20/30/40/50	1	2,5	100
K0645.1541005X	K0645.1541305X	M5	18	9	21,5	15	14,7	22	70,4	79,5	20/30/40/50	1,2	4	120
K0645.1541006X	K0645.1541306X	M6	18	9	21,5	15	14,7	22	70,4	79,5	20/30/40/50	1,2	4	120
K0645.2541008X	K0645.2541308X	M8	27	11	33,3	24	18,3	28,8	96	108	25/30/40/50	1,5	8	350

K0646**PUZZLE
ADVANCE**
COMERCIO DE ACCESÓRIOS INDUSTRIAIS

Cam levers with plastic handle

internal and external thread, steel or stainless steel

**Material:**

Handles and thrust washer plastic PA 66 fibreglass reinforced.
Hinge pins stainless steel 1.4305.
Studs and washer steel grade 5.8 or stainless steel 1.4305.

Version:

Grip black or traffic red RAL3020.
Thrust washer black.
Hinge pin blank.
Stud and washer blue passivated or bright stainless steel.

Sample order:

K0646.1521105X20 (include length L)

Note:

Plastics are subject to creeping under load (retardation), this can cause reduced clamping force.

Cam levers with plastic handle

internal and external thread, steel or stainless steel



KIPP Cam levers with black plastic grip and internal thread

Order No. steel	Order No. stainless steel	D	D1	D2	B	B1	H	H1	A	A1	Travel	Clamping force F (kN)	Hand force FH N
K0646.1521105	K0646.1531105	M5	18,1	9	22	16	14	23,4	71,5	79,6	1,15	2,5	125
K0646.1521106	K0646.1531106	M6	18,1	9	22	16	14	23,4	71,5	79,6	1,15	2,5	125
K0646.2521108	K0646.2531108	M8	27,1	11	33	24,2	16,2	27,7	100	110	1,5	5	170

KIPP Cam levers with red plastic grip and internal thread

Order No. steel	Order No. stainless steel	D	D1	D2	B	B1	H	H1	A	A1	Travel	Clamping force F (kN)	Hand force FH N
K0646.15218405	K0646.15318405	M5	18,1	9	22	16	14	23,4	71,5	79,6	1,15	2,5	125
K0646.15218406	K0646.15318406	M6	18,1	9	22	16	14	23,4	71,5	79,6	1,15	2,5	125
K0646.25218408	K0646.25318408	M8	27,1	11	33	24,2	16,2	27,7	100	110	1,5	5	170

KIPP Cam levers with black plastic grip and external thread

Order No. steel	Order No. stainless steel	D	D1	D2	B	B1	H	H1	A	A1	L	Travel	Clamping force F (kN)	Hand force FH N
K0646.1521105X	K0646.1531105X	M5	18,1	9	22	16	14	23,4	71,5	79,6	20/30/40/50	1,15	2,5	125
K0646.1521106X	K0646.1531106X	M6	18,1	9	22	16	14	23,4	71,5	79,6	20/30/40/50	1,15	2,5	125
K0646.2521108X	K0646.2531108X	M8	27,1	11	33	24,2	16,2	27,7	100	110	25/30/40/50	1,5	5	170
K0646.2521110X	K0646.2531110X	M10	27,1	11	33	24,2	16,2	27,7	100	110	25/30/40/50	1,5	5	170

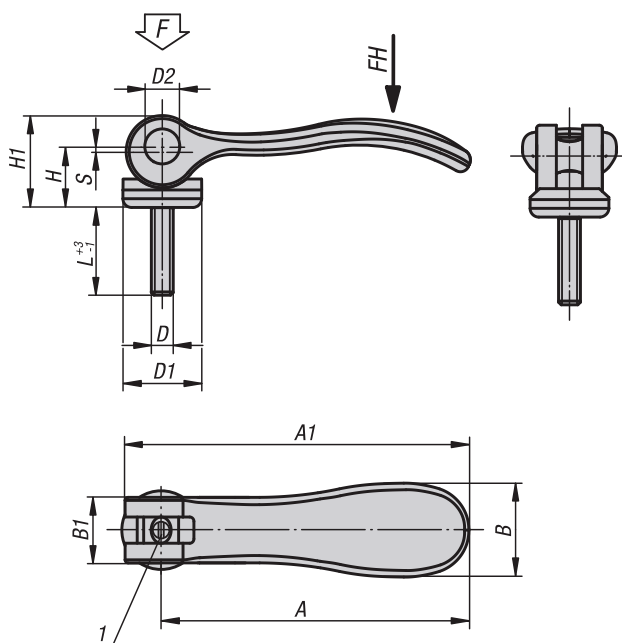
KIPP Cam levers with red plastic grip and external thread

Order No. steel	Order No. stainless steel	D	D1	D2	B	B1	H	H1	A	A1	L	Travel	Clamping force F (kN)	Hand force FH N
K0646.15218405X	K0646.15318405X	M5	18,1	9	22	16	14	23,4	71,5	79,6	20/30/40/50	1,15	2,5	125
K0646.15218406X	K0646.15318406X	M6	18,1	9	22	16	14	23,4	71,5	79,6	20/30/40/50	1,15	2,5	125
K0646.25218408X	K0646.25318408X	M8	27,1	11	33	24,2	16,2	27,7	100	110	25/30/40/50	1,5	5	170

K0006**PUZZLE
ADVANCE**
COMERCIO DE ACCESÓRIOS INDUSTRIAIS

Cam levers adjustable

external thread, steel or stainless steel

Kipp**Material:**

Handles cast aluminium EN AC-46200.

Thrust washer plastic PA 66 GF 35-X fibreglass reinforced.

Hinge pins stainless steel 1.4305.

Studs and washer steel grade 5.8 or stainless steel 1.4305.

Version:

Handles fine structured powder-coated, black or red RAL 3003.

Thrust washer black.

Hinge pin bright.

Studs and washer blue passivated steel or bright stainless steel.

Sample order:

K0006.9501103X10 (include length L)

Note:

Adjustable cam levers are used if the position of the lever relative to the axis of tension only permits one specific position (interference circle). The exact position of the lever is adjusted using a screwdriver on the fine thread setscrew.

Plastics are subject to creeping under load (retardation).

Drawing reference:

1) setscrew for fine adjustment of lever

K0006

Cam levers adjustable

external thread, steel or stainless steel



KIPP Adjustable cam levers with external thread, grip black

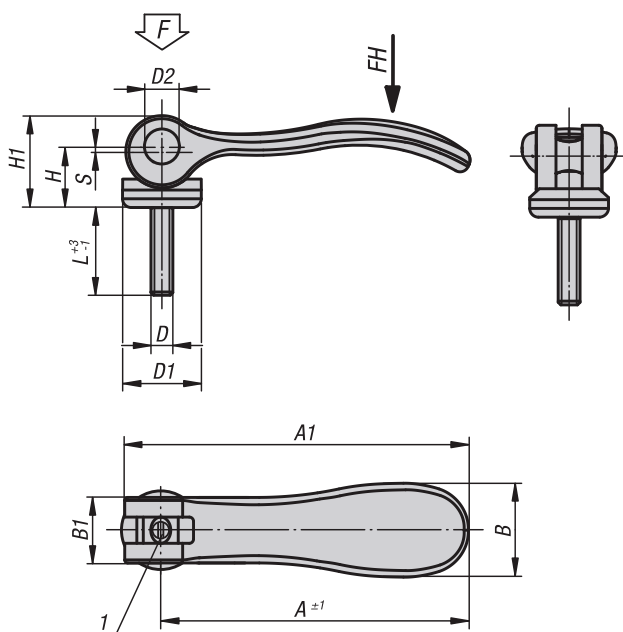
Order No. steel	Order No. stainless steel	D	D1	D2	B	B1	H	H1	A	A1	L	Stroke S	Clamping force F (kN)	Hand force FH N
K0006.9501103X	K0006.9511103X	M3	12	6	14,4	11,5	9	13	36,2	41,7	10/15/30	1	1,5	90
K0006.9501104X	K0006.9511104X	M4	12	6	14,4	11,5	9	13	36,2	41,7	10/15/30	1	1,5	90
K0006.0501104X	K0006.0511104X	M4	15,4	8	18	13	11,2	17	52,3	59,1	15/20/30	1	2,5	100
K0006.0501105X	K0006.0511105X	M5	15,4	8	18	13	11,2	17	52,3	59,1	20/30/40/50	1	2,5	100
K0006.1501105X	K0006.1511105X	M5	18,1	9	21,5	15	14,5	22	70,4	79,2	20/30/40/50	1,2	4	120
K0006.1501106X	K0006.1511106X	M6	18,1	9	21,5	15	14,5	22	70,4	79,2	20/30/40/50	1,2	4	120
K0006.2501108X	K0006.2511108X	M8	27,1	11	33,3	24	18	28,5	96	108	25/30/40/50	1,5	8	350
K0006.2501110X	K0006.2511110X	M10	27,1	11	33,3	24	18	28,5	96	108	25/30/40/50	1,5	8	350

KIPP Adjustable cam levers with external thread, grip red

Order No. steel	Order No. stainless steel	D	D1	D2	B	B1	H	H1	A	A1	L	Stroke S	Clamping force F (kN)	Hand force FH N
K0006.9501403X	K0006.9511403X	M3	12	6	14,4	11,5	9	13	36,2	41,7	10/15/30	1	1,5	90
K0006.9501404X	K0006.9511404X	M4	12	6	14,4	11,5	9	13	36,2	41,7	10/15/30	1	1,5	90
K0006.0501404X	K0006.0511404X	M4	15,4	8	18	13	11,2	17	52,3	59,1	15/20/30	1	2,5	100
K0006.0501405X	K0006.0511405X	M5	15,4	8	18	13	11,2	17	52,3	59,1	20/30/40/50	1	2,5	100
K0006.1501405X	K0006.1511405X	M5	18,1	9	21,5	15	14,5	22	70,4	79,2	20/30/40/50	1,2	4	120
K0006.1501406X	K0006.1511406X	M6	18,1	9	21,5	15	14,5	22	70,4	79,2	20/30/40/50	1,2	4	120
K0006.2501408X	K0006.2511408X	M8	27,1	11	33,3	24	18	28,5	96	108	25/30/40/50	1,5	8	350

Cam levers adjustable

external thread, steel



Material:

Handle steel 1.0401.
Thrust washer plastic PA 66 GF 35-X fibreglass reinforced.
Hinge pin stainless steel 1.4305.
Stud and washer steel, grade 5.8.

Version:

Handle, stud and washer blue passivated.
Thrust washer black.
Hinge pin bright.

Sample order:

K0789.1502205X20

Note:

Adjustable cam levers are used if the position of the lever relative to the axis of tension only permits one specific position (interference circle). The exact position of the lever is adjusted using a screwdriver on the fine thread setscrew. Plastics are subject to creeping under load (retardation).

Drawing reference:

1) setscrew for fine adjustment of lever

KIPP Cam levers, adjustable, external thread, steel

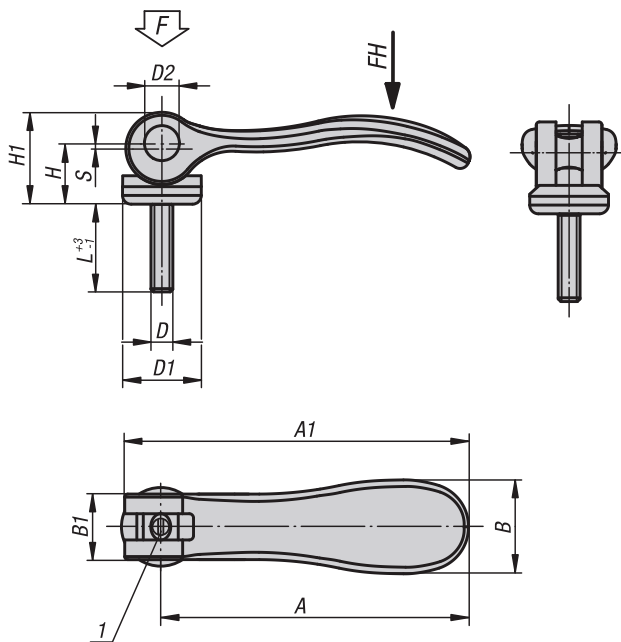
Order No.	Size	D	D1	D2	B	B1	H	H1	A	A1	L	Stroke S	Clamping force F (kN)	Hand force FH N
K0789.1502205X	1	M5	18,1	9	21,5	15	14,5	22	70,4	79,2	20/30/40/50	1,2	4	120
K0789.1502206X	1	M6	18,1	9	21,5	15	14,5	22	70,4	79,2	20/30/40/50	1,2	4	120
K0789.2502208X	2	M8	27,1	11	33,2	24	18	28,5	96	108	25/30/40/50	1,5	8	350

K0647

**PUZZLE
ADVANCE**
COMERCIO DE ACCESÓRIOS INDUSTRIAIS

Cam levers adjustable

external thread, stainless steel



Material:

Handles 1.4308.
Thrust washer plastic PA 66 GF 35-X fibreglass reinforced.
Hinge pin, washer and screw 1.4305.

Version:

Handle electropolished or blasted.
Thrust washer black.
Hinge pin, washer and screw bright.

Sample order:

K0647.1512005X20 (include length L)

Note:

Adjustable cam levers are used if the position of the lever relative to the axis of tension only permits one specific position (interference circle). The exact position of the lever is adjusted using a screwdriver on the fine thread setscrew. Plastics are subject to creeping under load (retardation).

Drawing reference:

1) setscrew for fine adjustment of lever

KIPP Cam levers, adjustable, external thread, stainless steel

Order No.	Surface	D	D1	D2	B	B1	H	H1	A	A1	L	Stroke S	Clamping force F (kN)	Hand force FH N
K0647.9512003X	electropolished	M3	12	6	14,4	11,5	9	13	36,2	41,7	10/15/30	1	1,5	90
K0647.9512004X	electropolished	M4	12	6	14,4	11,5	9	13	36,2	41,7	10/15/30	1	1,5	90
K0647.0512004X	electropolished	M4	15,4	8	18	13	11,2	17	52,3	59,1	15/20/30	1	2,5	100
K0647.0512005X	electropolished	M5	15,4	8	18	13	11,2	17	52,3	59,1	20/30/40/50	1	2,5	100
K0647.1512005X	electropolished	M5	18,1	9	21,5	15	14,5	22	70,4	79,2	20/30/40/50	1,2	4	120
K0647.1512006X	electropolished	M6	18,1	9	21,5	15	14,5	22	70,4	79,2	20/30/40/50	1,2	4	120
K0647.2512008X	electropolished	M8	27,1	11	33,3	24	18	28,5	96	108	25/30/40/50	1,5	8	350
K0647.2512010X	electropolished	M10	27,1	11	33,3	24	18	28,5	96	108	25/30/40/50	1,5	8	350
K0647.9512303X	blasted	M3	12	6	14,4	11,5	9	13	36,2	41,7	10/15/30	1	1,5	90
K0647.9512304X	blasted	M4	12	6	14,4	11,5	9	13	36,2	41,7	10/15/30	1	1,5	90
K0647.0512304X	blasted	M4	15,4	8	18	13	11,2	17	52,3	59,1	15/20/30	1	2,5	100
K0647.0512305X	blasted	M5	15,4	8	18	13	11,2	17	52,3	59,1	20/30/40/50	1	2,5	100
K0647.1512305X	blasted	M5	18,1	9	21,4	15	14,5	22	70,4	79,2	20/30/40/50	1,2	4	120
K0647.1512306X	blasted	M6	18,1	9	21,4	15	14,5	22	70,4	79,2	20/30/40/50	1,2	4	120
K0647.2512308X	blasted	M8	27,1	11	33,3	24	18	28,5	96	108	25/30/40/50	1,5	8	350

K0647

**PUZZLE
ADVANCE**
COMERCIO DE ACCESÓRIOS INDUSTRIAIS

Cam levers adjustable

stainless steel, with external thread, thrust washer stainless steel



Material:

Handle 1.4308.
Thrust washer 1.4034 stainless steel, hardened.
Hinge pin and stud 1.4305 stainless steel.

Version:

Handle electropolished or blasted.
Thrust washer, hinge pin and screw bright.

Sample order:

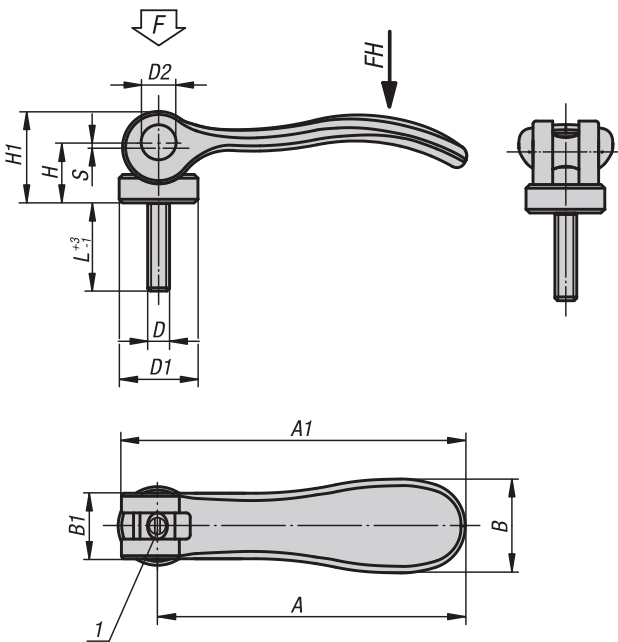
K0647.0541305X20 (include length L)

Note:

Adjustable cam levers are used when the position of the clamping lever relative to the clamping axis permits only one specific position (swing circle interference). The exact position of the clamping lever is adjusted with a screwdriver via the fine thread on the stud. The thrust washer face is lightly greased before delivery. The grease is FDA conform and is suitable for use in the foodstuff and pharmaceutical industries.

Drawing reference:

1) setscrew for fine adjustment of lever

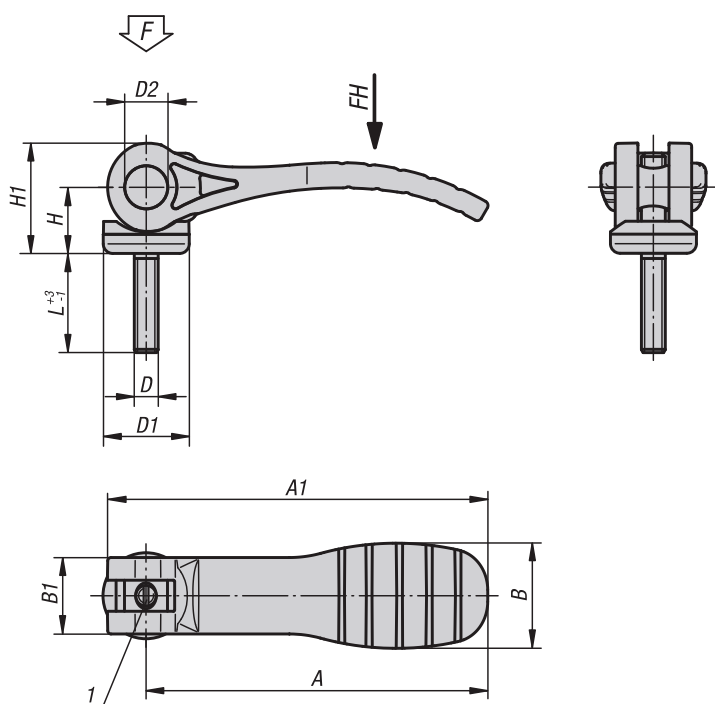


KIPP Cam levers adjustable, stainless steel, with external thread, thrust washer stainless steel

Order No. electropolished	Order No. blasted	D	D1	D2	B	B1	H	H1	A	A1	L	Stroke S	Clamping force F (kN)	Hand force FH N
K0647.9541003X	K0647.9541303X	M3	12	6	14,4	11,5	9	13,5	36,2	41,7	10/15/30	1	1,5	90
K0647.9541004X	K0647.9541304X	M4	12	6	14,4	11,5	9	13,5	36,2	41,7	10/15/30	1	1,5	90
K0647.0541004X	K0647.0541304X	M4	15,4	8	18	13	11,4	17,2	52,3	59,1	15/20/30	1	2,5	100
K0647.0541005X	K0647.0541305X	M5	15,4	8	18	13	11,4	17,2	52,3	59,1	20/30/40/50	1	2,5	100
K0647.1541005X	K0647.1541305X	M5	18	9	21,5	15	14,7	22	70,4	79,2	20/30/40/50	1,2	4	120
K0647.1541006X	K0647.1541306X	M6	18	9	21,5	15	14,7	22	70,4	79,2	20/30/40/50	1,2	4	120
K0647.2541008X	K0647.2541308X	M8	27	11	33,3	24	18,3	28,8	96	108	25/30/40/50	1,5	8	350

Cam levers adjustable with plastic handle

external thread, steel or stainless steel



Material:

Handles and thrust washer plastic PA 66 fibreglass reinforced.
Hinge pins stainless steel 1.4305.
Studs and washer steel grade 5.8 or stainless steel 1.4305.

Version:

Grip black or traffic red RAL3020.
Thrust washer black.
Hinge pin blank.
Stud and washer blue passivated or bright stainless steel.

Sample order:

K0648.1521105X20 (include length L)

Note:

Adjustable cam levers are used if the position of the lever relative to the axis of tension only permits one specific position (interference circle). The exact position of the lever is adjusted using a screwdriver on the fine thread setscrew. Plastics are subject to creeping under load (retardation), this can cause reduced clamping force.

Drawing reference:

1) setscrew for fine adjustment of lever

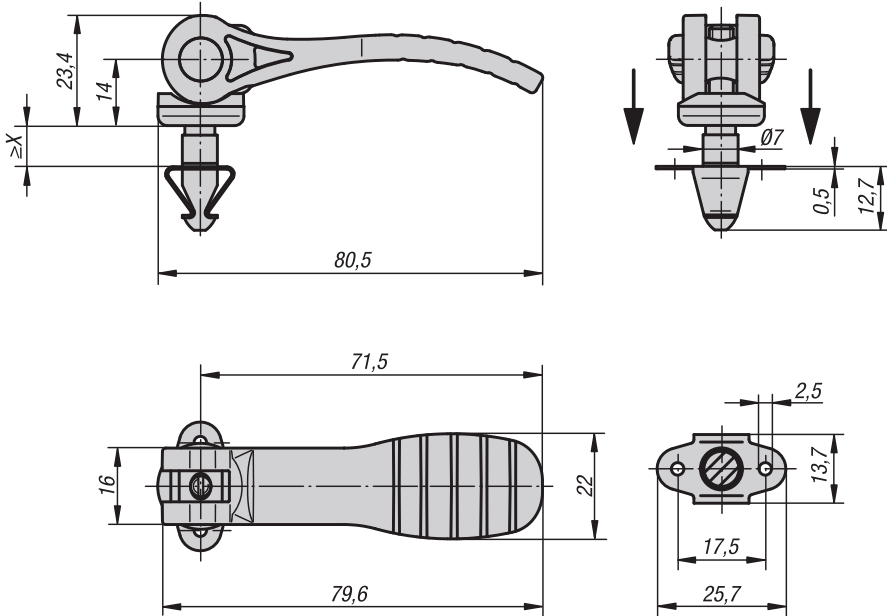
KIPP Cam levers, adjustable with black plastic grip and external thread

Order No. steel	Order No. stainless steel	D	D1	D2	B	B1	H	H1	A	A1	L	Travel	Clamping force F (kN)	Hand force FH N
K0648.1521105X	K0648.1531105X	M5	18,1	9	22	16	14	23,4	71,5	79,6	20/30/40/50	1,15	2,5	125
K0648.1521106X	K0648.1531106X	M6	18,1	9	22	16	14	23,4	71,5	79,6	20/30/40/50	1,15	2,5	125
K0648.2521108X	K0648.2531108X	M8	27,1	11	33	24	16,2	27,7	100	110	25/30/40/50	1,5	5	170
K0648.2521110X	K0648.2531110X	M10	27,1	11	33	24	16,2	27,7	100	110	25/30/40/50	1,5	5	170

KIPP Cam levers, adjustable with red plastic grip and external thread

Order No. steel	Order No. stainless steel	D	D1	D2	B	B1	H	H1	A	A1	L	Travel	Clamping force F (kN)	Hand force FH N
K0648.15218405X	K0648.15318405X	M5	18,1	9	22	16	14	23,4	71,5	79,6	20/30/40/50	1,15	2,5	125
K0648.15218406X	K0648.15318406X	M6	18,1	9	22	16	14	23,4	71,5	79,6	20/30/40/50	1,15	2,5	125
K0648.25218408X	K0648.25318408X	M8	27,1	11	33	24	16,2	27,7	100	110	25/30/40/50	1,5	5	170

Cam levers with quick lock



Material, version:

Handle and thrust washer fibreglass reinforced PA66 plastic, black.
Hinge pins 1.4305 bright stainless steel. Locking pin 1.0718 blue passivated steel.
Spring clip passivated 1.4310 stainless steel.

Sample order:

K0751.121107X2

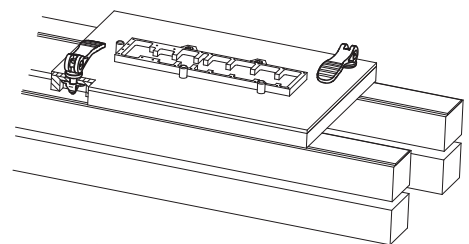
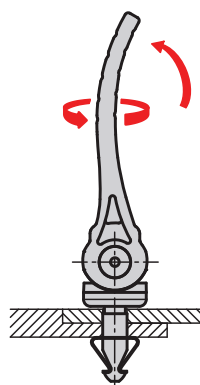
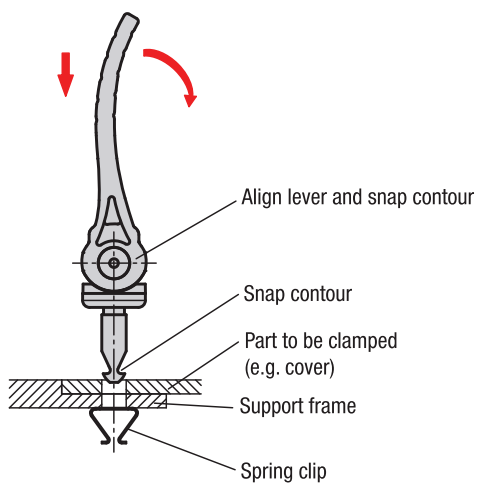
Note:

A sheet metal element can be positioned by engaging the spring clip. The sheet metal element is then clamped using the handle.
Plastics are subject to creeping under load (retardation), this can cause reduced clamping force.

Installation instructions for cam levers with quick lock

Push in to install
Swivel grip down to clamp

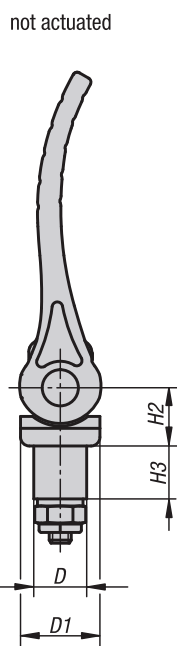
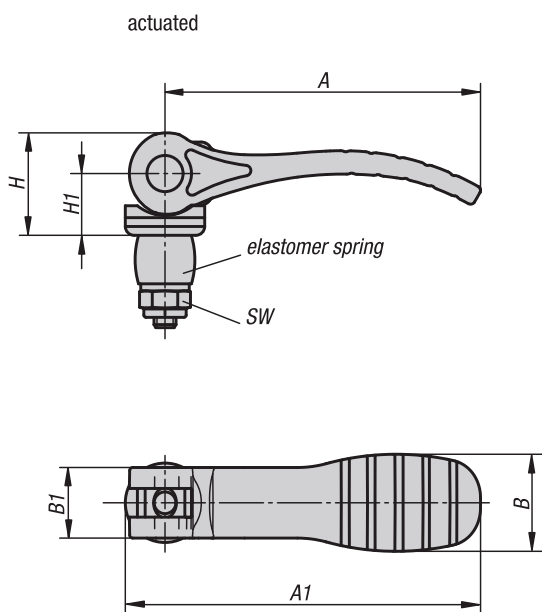
Swivel grip up and twist to loosen



KIPP Cam levers with quick lock

Order No.	X Material thickness	Clamping force ca. N
K0751.121107X2	1,9 - 2,3	500
K0751.121107X4	3,9 - 4,3	500
K0751.121107X6	5,9 - 6,3	500

Cam lever with elastomer lock



Material:

Handle and thrust washer fibreglass reinforced plastic PA 66.
Hinge pin stainless steel 1.4305.
Stud and washer steel grade 5.8
PUR elastomer spring.

Version:

Handles and thrust washer black.
Hinge pins bright.
Studs and washer blue passivated.
Hexagon nuts with thread lock and thrust washer blue passivated.

Sample order:

K0118.121112X12

Note:

Actuating the handle causes the elastomer spring to expand and form to the surrounding surface. The amount of expansion of the elastomer spring and hence the clamping force can be adjusted using the nut with clamping element. Simultaneously, the clamping element nut ensures that the preset clamping force remains unchanged when the clamp is released.

Application:

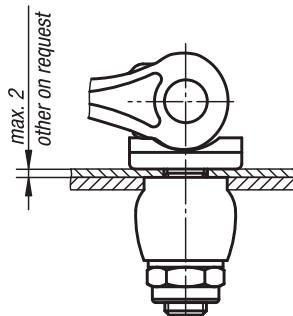
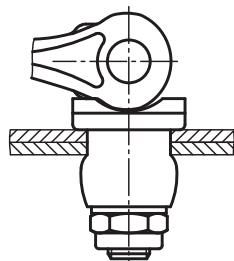
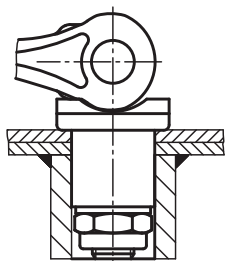
The specified holding forces are not suitable for constant loads.

We would be happy to supply samples to test on your application.

Full bore clamping

Sheet metal clamping 1

Sheet metal clamping 2



KIPP Cam levers with elastomer lock

Order No.	Size	D	D1	B	B1	H	H1	H2	H3	A	A1	SW	Clamping force ca. N clamp bore (no permanent load)	Clamping force ca. N plate clamping (no permanent load)
K0118.121112X12	1	12	18,1	22	16	23,2	14	12,85	12	71,5	79,6	10	100	50
K0118.121114X12	1	14	18,1	22	16	23,2	14	12,85	12	71,5	79,6	10	150	60
K0118.221116X20	2	16	27,1	33	24	27,8	16,2	14,7	20	99,9	110	13	350	60
K0118.221118X20	2	18	27,1	33	24	27,8	16,2	14,7	20	99,9	110	13	350	100