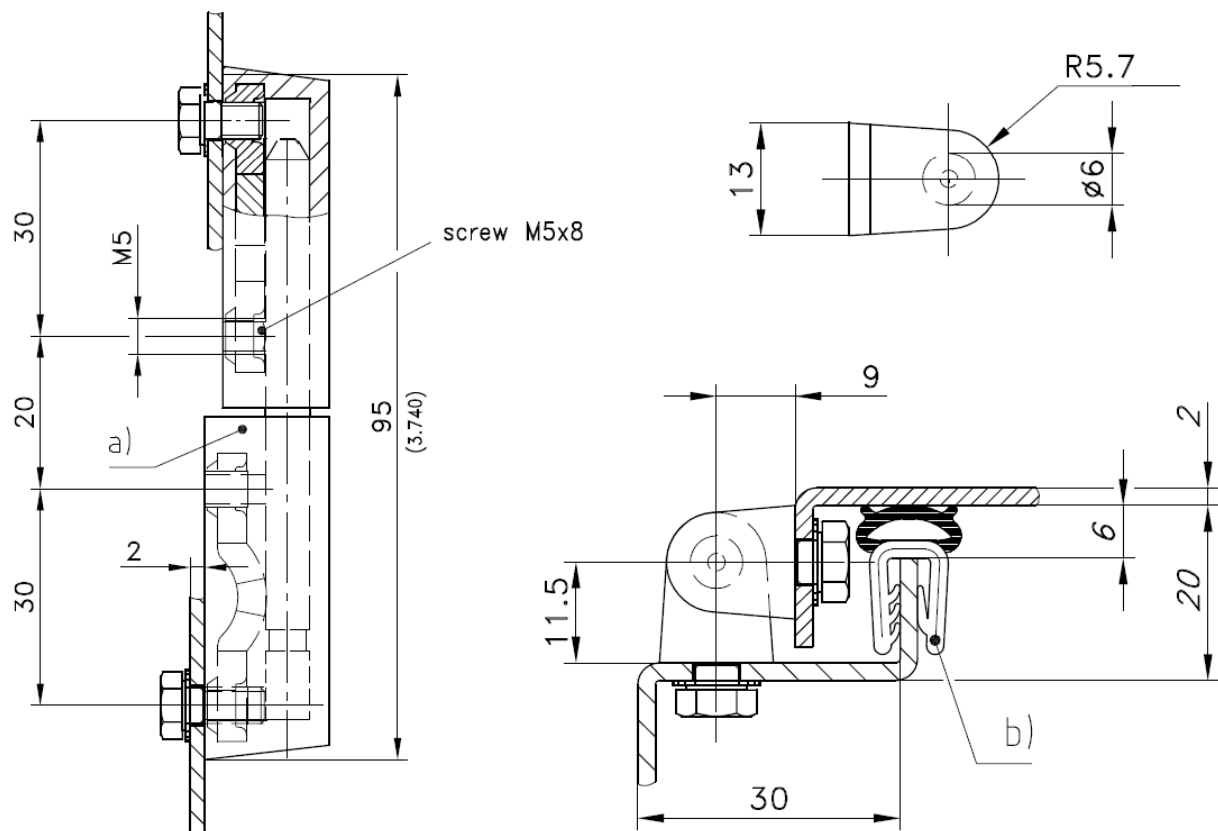


HINGE 180°

180° Polyamide hinge, RH and LH application.
Fastening screws M5x15 at top and bottom will give electrical conductivity.
Door is lift-off.
Top and bottom part have a molded-in plate with 2 threaded holes M5.
This construction makes the hinge very strong.
Corrosion-resistant by stainless steel pin.
180° Opening angle.
Material:
Hinge parts: PA, black
Plate insert (fully molded-in): steel, untreated
Pin: stainless steel



Overview of items

version	Part No.
a) Polyamide hinge	PA6301511-000
Screws and washers are not included.	
b) e.g. Clip-on profiles	PA7101212-000