

HINGE 180°

For surface mounted door

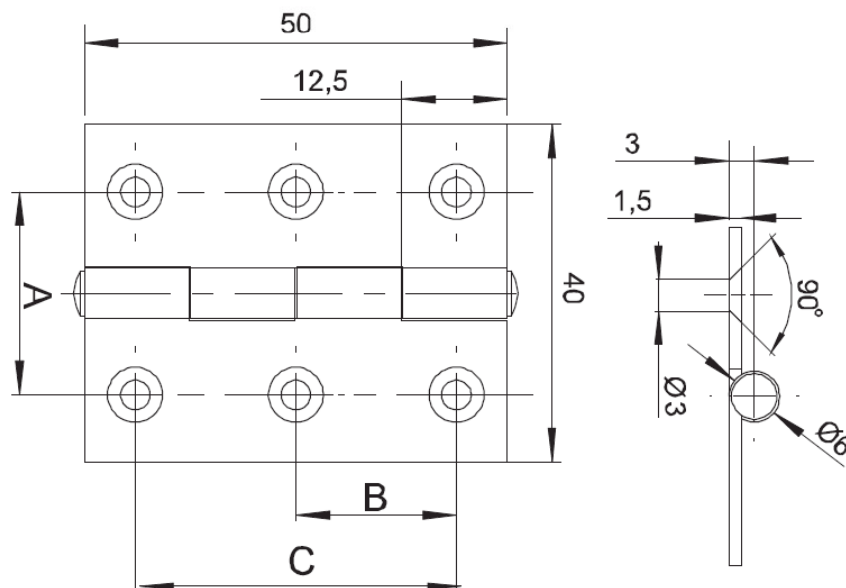
Screw-on Hinge for surface mounted door.

Material:

Hinge: steel, zinc plated or Stainless Steel

Pin: steel, zinc plated or Stainless Steel

Holder: steel, zinc plated or Stainless Steel



Overview of items

version	A	B	C	Steel zinc plated (RAL7035)	Steel zinc plated (RAL9005)	Stainless Steel
Hinge	24	19	38	PA6121481-000	PA6121481-0SW	PA6121481-SST
Hinge	23	17,5	35	PA6121482-000	PA6121482-0SW	PA6121482-SST
Hinge*	23	17,5	35	PA6121483-000	PA6121483-0SW	PA6121483-SST

* -no chamfer on mounting holes