

SNAP-LOCK L36

Length 36

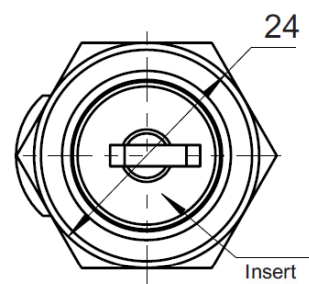
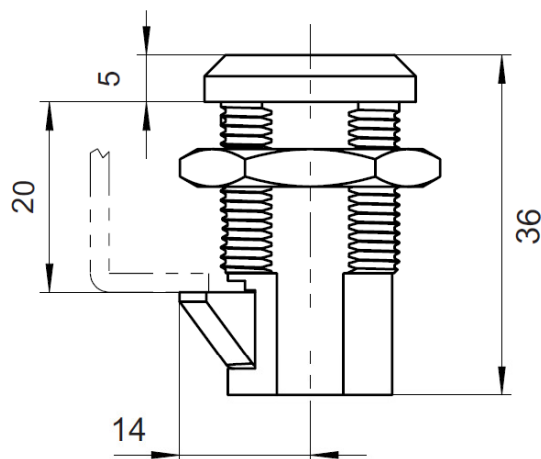
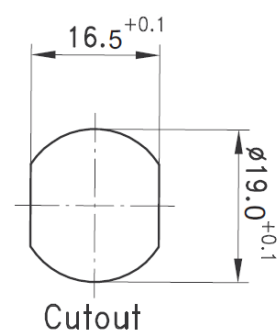
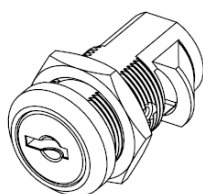
The spring loaded cam of this snap-lock is operated by the key, or insert
Lock is supplied with nut and wide stabilizing washer underneath nut.

Material:

Snap-Lock: zinc die, chrome plated

Washer: steel, zinc plated

Nut: steel, zinc plated



Overview of items

version	Part No
Snap-lock	
Tubular keyed alike	PA2221110-000
Keyed alike	PA2221111-000
Triangular 8mm	PA2221119-000