

TUMBLER LOCK

Stator

Brassplated zinc alloy.

Rotor

Chromeplated zinc alloy.

Front plate

Stainless steel.

Nut

M19x1 in brass or Clip .

Flat spring washer

Zinc-plated steel (only for l1=13 and 16 mm),

Internal toothed washer

Zinc-plated steel .

Closing lever

Zinc-plated steel, 2.5 mm thickness.

Assembly by means of hexagon nut M6x0.75 for l1=13, 16 and 18 mm, assembly with screw M5x5 for l1=20 mm or with screw M5x8 for l1=25 and 30 mm.

Two keys

Nickelplated brass, removable in on or two positions.

Rotation

180°.

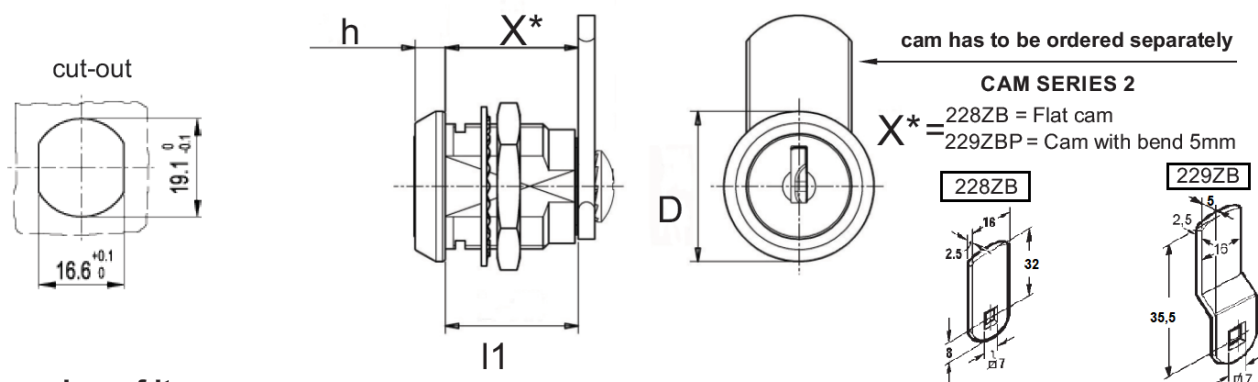
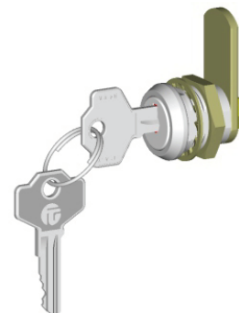
90° - on request

Standard executions

- **D** - lock with 400 different combinations. Each lock has a couple of keys with different combination.
- **A** - lock with one combination. All locks have a key with the same combination.
- **M** - lock with MASTERKEY. Each lock has a couple of keys with different combination at 161 combination.

Special executions and accessories

- Closing levers in other dimensions.
- Brass threaded extension for prolonged positioning of the lever, only for stator l1 = 20, 25 and 30 mm



Overview of items

| version | dimensions | | | Part No. |
|-----------------------|----------------|----|---|---------------|
| | l ₁ | D | h | |
| Keyed alike G9233 | 13 | 23 | 5 | PA225113A-000 |
| Keyed alike G9233 | 16 | 23 | 5 | PA225116A-000 |
| Keyed alike G9233 | 20 | 23 | 5 | PA225120A-000 |
| Keyed alike G9233 | 25 | 23 | 5 | PA225125A-000 |
| Keyed alike G9233 | 30 | 23 | 5 | PA225130A-000 |
| keyed different/mixed | 13 | 23 | 5 | PA225113D-000 |
| keyed different/mixed | 16 | 23 | 5 | PA225116D-000 |
| keyed different/mixed | 20 | 23 | 5 | PA225120D-000 |
| keyed different/mixed | 25 | 23 | 5 | PA225125D-000 |
| keyed different/mixed | 30 | 23 | 5 | PA225130D-000 |
| Masterkey | 13 | 23 | 5 | PA225113M-000 |
| Masterkey | 16 | 23 | 5 | PA225116M-000 |
| Masterkey | 20 | 23 | 5 | PA225120M-000 |
| Masterkey | 25 | 23 | 5 | PA225125M-000 |
| Masterkey | 30 | 23 | 5 | PA225130M-000 |

*Cam steel (zinc plated) - cam series 2 has to be ordered separately