

## SAFTY QUARTER-TURN

vibration-proof also at high sealing pressure through an integrated latch.

At the double bit version the operation is not possible without an appropriate key.

The key is captive in open position according to DIN 43668.

Water- and dust-tight according to IP65 DIN EN 60529.

**An additional advantage:**

Completely closed housing surface

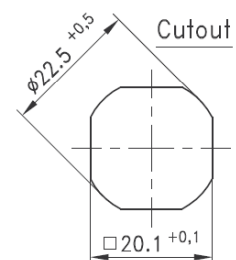
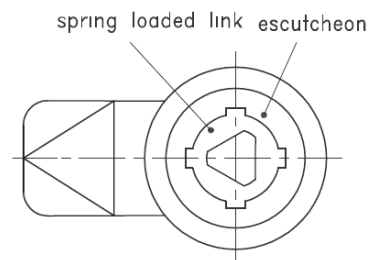
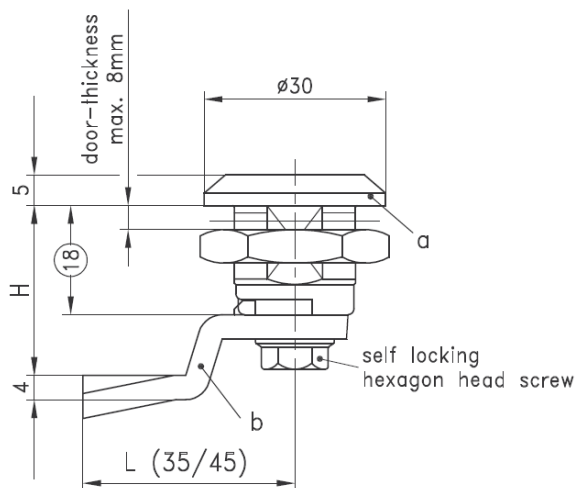
**Material:**

**Housing:** zinc die, black or chrome plated

**Spring loaded link and Escutcheon:** zinc die, black or chrome plated

**Insert:** zinc die, black or chrome plated

**Cam:** steel, zinc plated



### Overview of items

version	zinc die chrome pl.	zinc die black
a) Control Unit completely assembled and sealed ( IP65) but without cam Insert Triangular 7mm	PA2272738-000	PA2272748-000
b) Cam steel, zinc plated - see cam series 5 See Page 1A-130 (on request parts can be assembled)		