

QUARTER-TURN WITH T-HANDLE L18

For cutout 20.1, length 18, with cylinder

Quarter-turn with T-handle, RH or LH application

Water- and dust-tight according to IP65 DIN EN 60529.

The Quarter-Turn consists of two basic components which can be combined to suit your application.

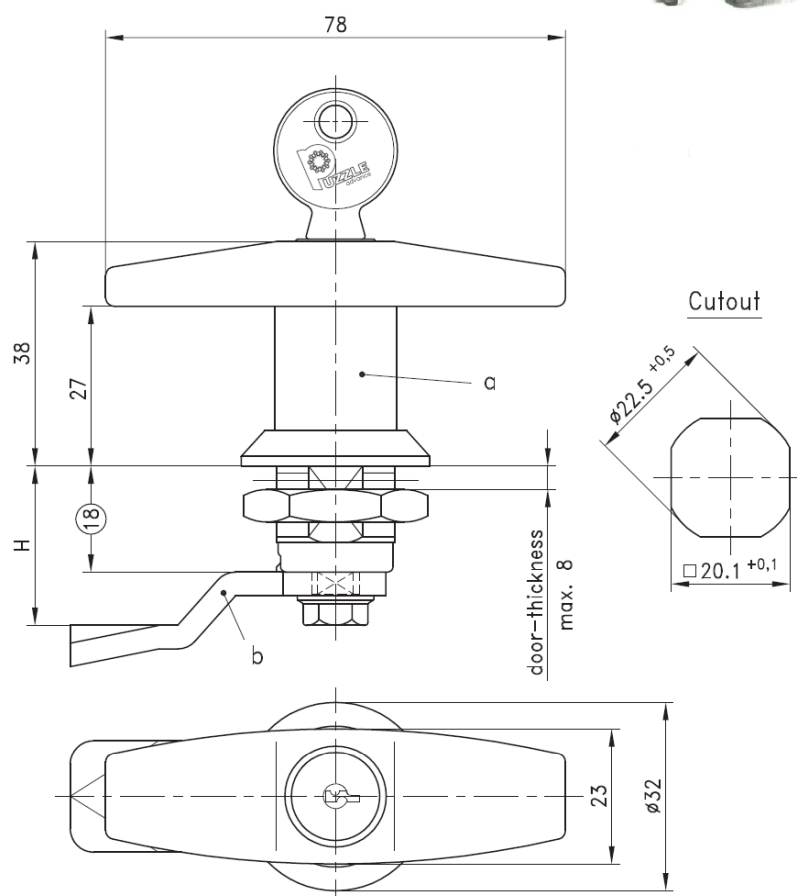
A pre-assembled Quarter-Turn can be installed in the cutout.

Material:

Handle: zinc die, chrome plated, black, PA black or stainless steel

Housing: steel, zinc plated, black or stainless steel

Cam: steel, zinc plated, PA black or stainless steel



Overview of items

version	Part No.	Part No.	Part No.
a) Quarter-turn with T-handle	stainless steel	zinc die, chrome pl.	zinc die, black
keyed alike G333*	PA2109220-SST	PA2109220-000	PA2109210-000
Non locking	PA2109221-SST	PA2109221-000	PA2109211-000
Keyed different/mixed		PA2109222-000	PA2109212-000
b) Cam steel (zinc plated) See Page 1A-130			
All lockable handles supplied with two keys.			
* with stainless dust-shutter			