

For cutout 14.1, length 13.5, with cylinder

Wing Quarter-Turn with 90° rotation, RH or LH application.

Wing Quarter-Turn with 90° rotation, RH or LH application.

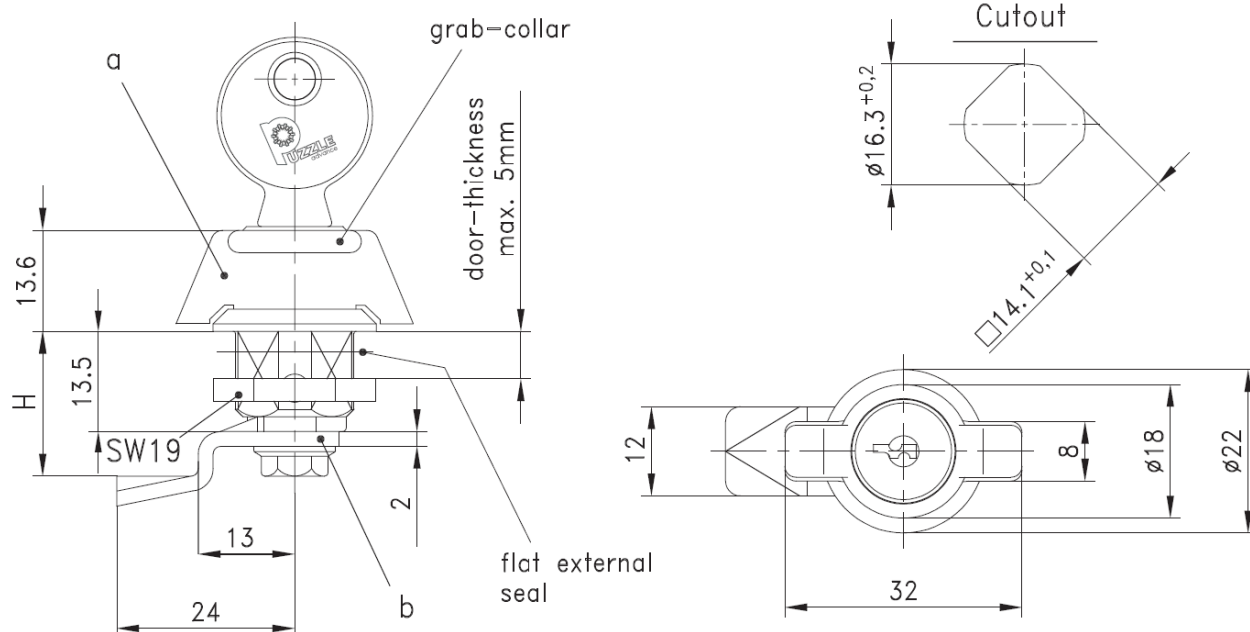
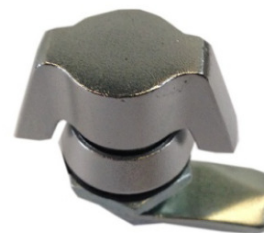
The Quarter-Turn consists of two basic components which can be combined to suit your application.

A pre-assembled Quarter-Turn can be installed in the cutout.

**Material:**

**Wing handle and housing:** zinc die, black or chrome plated

**Cam:** steel, zinc plated



## Overview of items

version	Part No.	Part No.
a) Wing Quarter-Turn with housing screw and flat external seal	chrome plated	surface black
non locking	PA2113210-000	PA2113212-000
keyed alike G2233	PA2113211-000	PA2113213-000
b) Cam H in mm (on request parts can be assembled)		
7.5	PA1070075-000	
13.5	PA1070135-000	
19.5	PA1070195-000	
All locks supplied with two keys.		
* Price and delivery time on request		