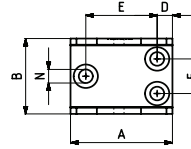
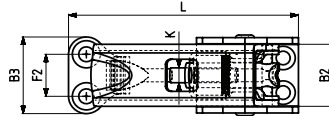
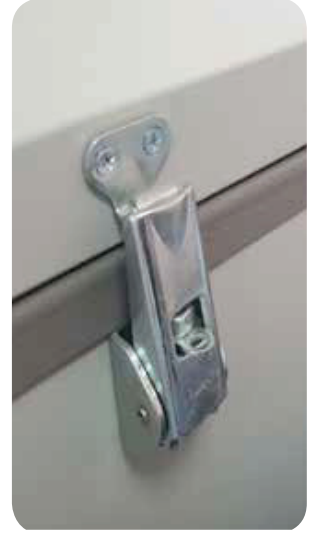
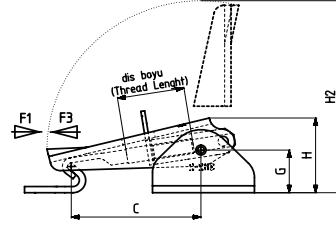


362



MODEL NO	PASLANMAZ (STAINLESS)	F1 (N)	F3 (N)	STROK (DIŞ BOYU) (STROKE) (thread length)	AĞIRLIK (WEIGHT) (gr)
362-1	S362 -	1400	1650	25	140
362-2	S362 -	1600	1800	25	160

F1 : BASKI KUVVETİ (EXERTING FORCE) , F3 : TUTMA KAPASİTESİ (HOLDING CAPACITY)



Ayak Tipi: Yatay Tabanlı

Body Mounting Base: Horizontal



341
Sayfa/Page: 41



361
Sayfa/Page: 44



363
Sayfa/Page: 45

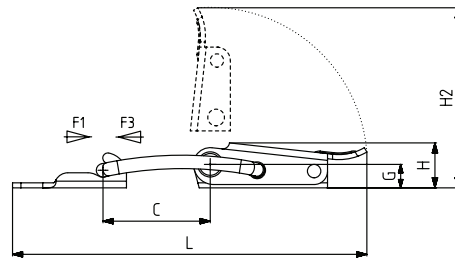
MODEL NO	A	B	B2	B3	C Min	C Max	D	E ~	F ~	F2 ~	G	H	H2	K	L Min	L Max	N
362-1	40	29,5	24	31	47	62	6	28	14	17	17	30	78	M6	86	101	Ø 5,5
362-2	40	30,5	25	31	47	62	6	28	14	17	17	30	78	M8	86	101	Ø 5,5

363

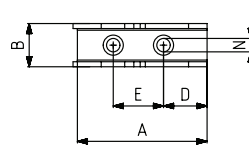
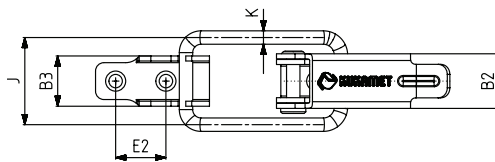


MODEL NO	PASLANMAZ (STAINLESS)	F1 (N)	F3 (N)	AĞIRLIK (WEIGHT) (gr)
363-2	S363-....	1500	1725	50

F1 : BASKI KUVVETİ (EXERTING FORCE) , F3 : TUTMA KAPASİTESİ (HOLDING CAPACITY)

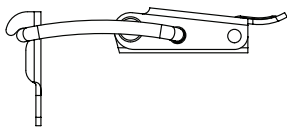


POS 1



Ayak Tipi: Yatay Tabanlı

Body Mounting Base: Horizontal



POS 2



351
Sayfa/Page: 42



361
Sayfa/Page: 44



362
Sayfa/Page: 45

MODEL NO	A	B	B2	B3	C	D	E ~	E2 ~	G	H	H2	J	K	L	N
363-2	38.5	13	16.3	15	32	13	15	15	7	13.5	54	25	4	106	Ø 4