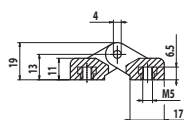
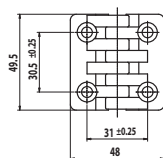
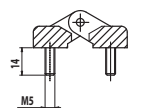
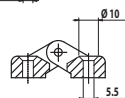
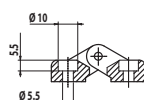
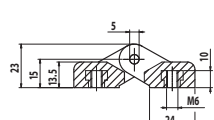
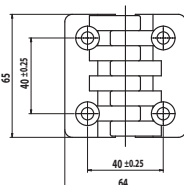
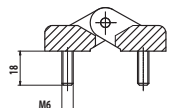
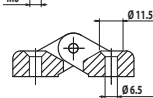
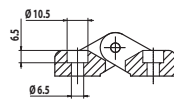
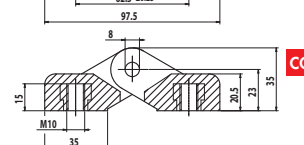
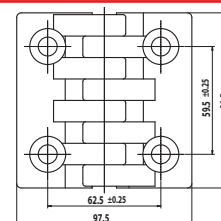
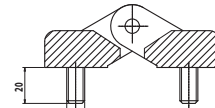
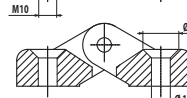
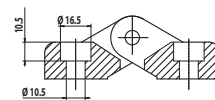


Cerniera in tecnopolimero speciale (a base poliammidica) ad alta resilienza, colore nero, finitura mat. Resistente a solventi, oli, grassi ed altri agenti chimici. Perno di rotazione in acciaio INOX AISI 303. Angolo di rotazione max 220°. Confezione: 30 pz.

Hinge in high impact strength special technopolymer (on polyamide base) in black colour with mat finish surfaces. Resistant to solvents, oil, greases and other chemical agents. AISI 303 stainless steel rotation pin. Rotation angle: max 220°. Packing: 30 pcs.

Scharnier aus speziellem Technopolymer (auf Polyamidbasis) mit hoher Kerbschlagfestigkeit in schwarz mit matter Oberfläche. Resistent gegen Lösungsmittel, Öle, Fette, und andere Chemikalien. Gelenkstift aus Edelstahl AISI 303. Drehwinkel: max 220°. Verpackung: 30 Stk.

Charnière en technopolymère spécial (à base polyamidique) à haute résilience, peinture noire mate. Résistante aux solvants, huiles, graisses et d'autres agents chimiques. Goupille en acier inox AISI 303. Angle de rotation: max 220°. Conditionnement: 30 pcs.

**DIMENSIONI E TIPI DI FISSAGGIO • DIMENSIONS AND FIXING • AMBESSUNGEN UND BEFESTIGUNGEN • DIMENSIONS ET FIXAGES****CC****DD****AA****BB****CC****DD****AA****BB****CC****DD****AA****BB****INFORMAZIONI PER ORDINARE • INFORMATION TO ORDER • BESTELLINFORMATIONEN • INFORMATIONS POUR COMMANDER**

Legenda • Legend • Legende • Legende

Consigliato • Recommended • Geraten • Reconnaté

A richiesta • On demand • Nach Anfrage • Sur demande

Non disponibile • Not available • Nicht verfügbar • Non disponible

**TIPO - TYPE - TYP - TYPE****CA** CERNIERA - HINGE - SCHARNIER - CHARNIERE**DIMENSIONI mm - DIMENSIONS mm - AMBESSUNGEN mm - DIMENSIONS mm.****02** 48 x 49,5**03** 64 x 65**04** 97,5 x 96,5**TIPO FISSAGGIO - FIXING - BEFESTIGUNG - FIXAGE****AA** FORI PASSANTI PER VITI TESTA SVASATA UNI 5933

TROUGH HOLES FOR COUNTERSUNK HEAD SCREWS DIN 7991 - DURCHGANGLÖCHER FÜR SENKKOPFSCHRAUBEN DIN 7991 - TROUS PASSANTS POUR VIS À TÊTE FRAISÉE DIN 7991

**BB** FORI PASSANTI PER VITI TESTA CILINDRICA UNI 5931

TROUGH HOLES FOR CYLINDRICAL HEAD SCREWS DIN 912 - DURCHGANGLÖCHER FÜR ZYLINDERSCHRAUBEN DIN 912 - TROUS PASSANTS POUR VIS À TÊTE FRAISÉE DIN 912

**CC** BOCCOLE FILETTATE IN OTTONE NICHELATO

NICKEL-PLATED BRASS BUSHINGS WITH TAPPED HOLE - GEWINDEBUCHSEN AUS VERNICKELTEM MESSING - BUSES FILETÉE EN LAITON NICKELÉ

**DD** PRIGIONIERI IN ACCIAIO NICHELATO - NIKEL-PLATED STEEL STUDS - STIFTSCHRAUBEN AUS VERNICKELTEM STAHL - GOUPILLES EN ACIER NICKELÉ

CA - 00