



Water-tight cap and Handle Pull

Accessories

Material:

Finger pull: PA, black or PP, black

Dustcap: PA, black or Chrome plated zdc

Steel seating: Zinc plated

Handle lock

Cylinder lock

Electronic lock

Swing handle

Rod control lock

Panel lock

Toggle and hook

Handles

Door stop

Hinge

Seal gasket

Accessories

Handle lock

Cylinder lock

Electronic lock

Swing handle

Rod control lock

Panel lock

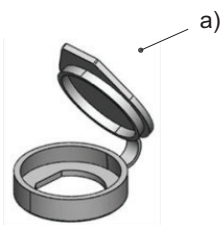
Toggle and hook

Handles

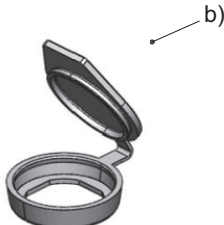
Door stop

Hinge

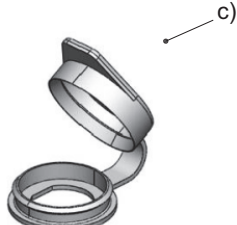
Seal gasket



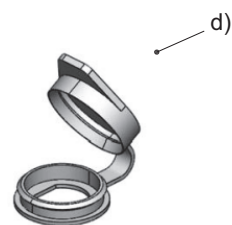
Black PA water-tight cap



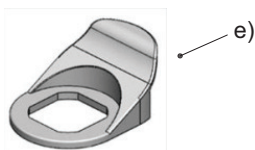
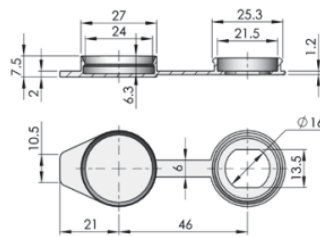
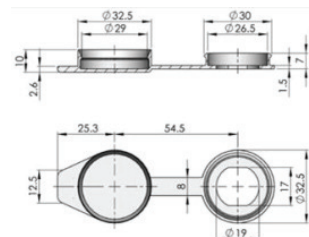
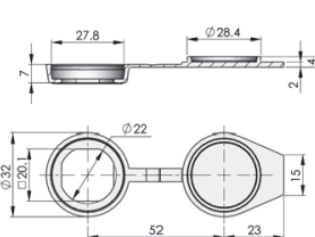
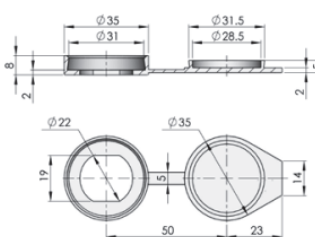
Black PA water-tight cap



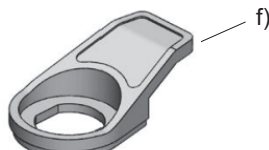
Black PA water-tight cap



Black PA water-tight cap



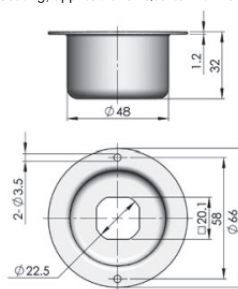
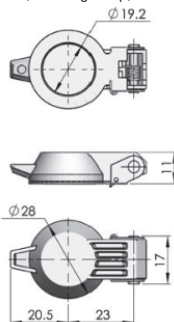
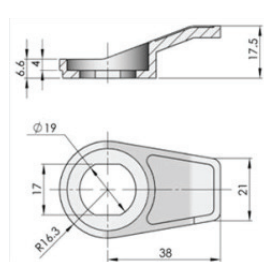
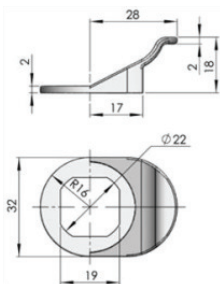
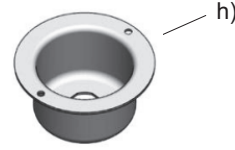
Black PA handle pull



Black PP handle pull



Chrome plated zdc, water-tight cap, sus bracket Zinc plated steel seating, applicable for Quarter-Turn or others.



Overview of items

version	Part No
a) Water-tight cap - PA, black	PA1464001-000
b) Water-tight cap - PA, black	PA1464011-000
c) Water-tight cap - PA, black	PA1464021-000
d) Water-tight cap - PA, black	PA1464031-000
e) Handle Pull - PA, black	PA1473011-000
f) Handle Pull - PP, black	PA1473021-000
g) Handle Pull - Chrome plated zdc	PA1474001-000
h) Steel seating - Zinc plated	PA1463011-000