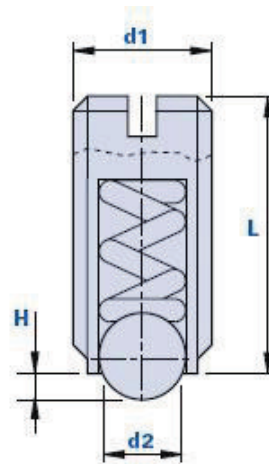


Ball plunger with screwdriver notching



Code	Description	Dimensions				Spring pressure		Weight grams	Stock
		d1	L	d2	H	Preload N.	Max load N.		
01GRZ	GR M3	M3	7	1.5	0.5	1.5	3	1	-
01GRA	GR M4	M4	9	2.5	0.8	6	12	1	
01GRB	GR M5	M5	12	3	0.9	7	13	1	
01GRC	GR M6	M6	14	3.5	1	9	15	2	
01GRD	GR M8	M8	16	5	1.5	20	35	4	
01GRE	GR M10	M10	19	6	1.7	25	45	7	
01GRF	GR M12	M12	22	8	2.5	35	60	10	
01GRP	GR M16	M16	24	10	3.5	65	110	24	
01GRN	GR M20	M20	30	12	4.5	80	160	43	

Material

Threaded body in burnished steel.

Polished and tempered steel ball.

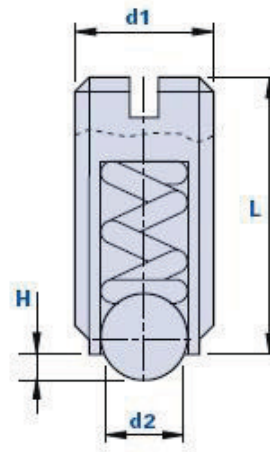
Package

M3/ M4/ M5/ M6/ M8: 25 - 50 pcs.

M10/ M12/ M16/ M20: 5 - 10 pcs.

Stainless steel ball plunger with screwdriver notching

inox



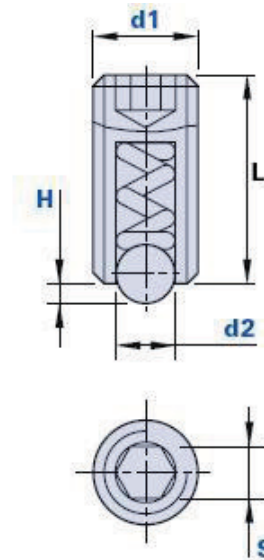
Code	Description	Dimensions				Spring pressure		Weight grams	Stock
		d1	L	d2	H	Preload N.	Max load N.		
01GRZX	GRX M3	M3	7	1.5	0.5	1.5	3	1	-
01GRAX	GRX M4	M4	9	2.5	0.8	6	12	1	-
01GRBX	GRX M5	M5	12	3	0.9	7	13	1	-
01GRCX	GRX M6	M6	14	3.5	1	9	15	2	-
01GRDX	GRX M8	M8	16	5	1.5	20	35	4	-
01GREX	GRX M10	M10	19	6	1.7	25	45	7	-
01GRFX	GRX M12	M12	22	8	2.5	35	60	10	-
01GRPX	GRX M16	M16	24	10	3.5	65	110	24	-
01GRNX	GRX M20	M20	30	12	4.5	80	160	43	-

Material

Threaded body in burnished steel aisi 303.
Polished and tempered steel ball.

Package

M3/ M4/ M5/ M6/ M8: 25 - 50 pcs.
M10/ M12/ M16/ M20: 5 - 10 pcs.



Code	Description	Dimensions					Spring pressure		Weight grams	Stock
		d1	L	d2	H	S	Preload N.	Max load N.		
01GRBC	GRB M6	M6	15	3.5	1	3	9	13	2	
01GRBD	GRB M8	M8	18	5	1.5	4	15	30	4	
01GRBE	GRB M10	M10	23	6	1.7	5	20	35	7	
01GRBF	GRB M12	M12	26	8	2.5	6	30	55	10	
01GRBP	GRB M16	M16	33	10	3.5	8	65	125	24	
01GRBN	GRB M20	M20	43	12	4.5	10	80	160	43	
01GRBS	GRB M24	M24	48	15	5.5	12	90	180	70	

Material

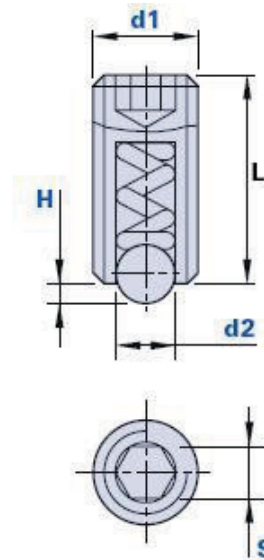
Threaded body in burnished steel.

Polished and tempered steel ball.

Package

M3/ M4/ M5/ M6/ M8: 25 - 50 pcs.

M10/ M12/ M16/ M20: 5 - 10 pcs.



Code	Description	Dimensions					Spring pressure		Weight grams	Stock
		d1	L	d2	H	S	Preload N.	Max load N.		
01GRBCX	GRBX M6	M6	15	3.5	1	3	9	13	2	
01GRBDX	GRBX M8	M8	18	5	1.5	4	15	30	4	-
01GRBEX	GRBX M10	M10	23	6	1.7	5	20	35	7	-
01GRBFX	GRBX M12	M12	26	8	2.5	6	30	55	10	-
01GRBPX	GRBX M16	M16	33	10	3.5	8	65	125	24	-
01GRBNX	GRBX M20	M20	43	12	4.5	10	80	160	43	-
01GRBSX	GRBX M24	M24	48	15	5.5	12	90	180	70	-

Material

Threaded body in stainless steel aisi 303.

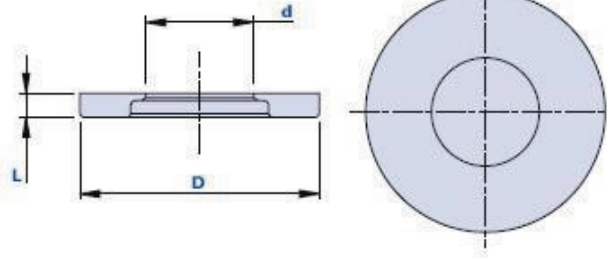
Polished and tempered steel ball.

Package

M3/ M4/ M5/ M6/ M8: 25 - 50 pcs

M10/ M12/ M16/ M20: 5 - 10 pcs.

Special flat washer which enables the fixing of handwheels and screws on sheets



Code	Description	Dimensions			Weight grams	Stock
		D	d	L		
01R14C	R 7.2	14	5,2	1,6	0,172	
01R16D	R 9.2	16	7,2	1,6	0,208	
01R18E	R 11.2	18	9,2	1,6	0,233	

Material

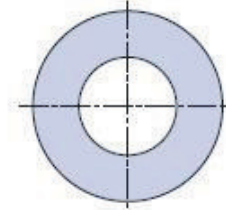
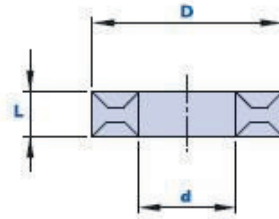
Glass- fiber reinforced polyamide- based (PA) technopolymer. Resistant to organic and inorganic chemical substances such as oils, greases, fuels and solvents.

Colour

Black with satin finish.

Package

200 - 500 - 1000 pcs.



Code	Description	Dimensions			Weight grams	Stock
		D	d	L		
01RB16D	RB D.8	16	8	4	1.5	-
01RB20E	RB D.10	20	10	4.5	0.8	-
01RB24F	RB D.12,5	24	12.5	5	1.2	-

Material

Glass- fiber reinforced polyamide- based (PA) technopolymer. Resistant to organic and inorganic chemical substances such as oils, greases, fuels and solvents.

Colour

Write satin finish.

Package

200 - 500 - 1000 pcs.